

Historic, Archive Document

Do not assume content reflects current scientific knowledge, policies, or practices.

1902

Fall Planting

LIBRARY,
U. S. Department of Agriculture,
Washington, D. C.

The question is often asked, Which is the better time to plant, fall or spring? The answer depends upon what is to be planted and when the question is asked. If it is asked in the summer or fall, then fall is undoubtedly the better time to plant all trees, shrubs and herbaceous plants of unquestioned hardiness, and then the fall is a time of comparative leisure in gardening operations and the weather is more favorable and the soil is usually in better condition and pleasanter to work in than it is in our springs, wet and cold as they are nine years out of ten. It must be remembered, however, if the best results are wanted with hardy herbaceous plants, they should be planted early enough in the fall for them to become established before freezing weather sets in, otherwise they are apt to be thrown out of the ground by frost in winter-time. This can be prevented by a mulching of stable manure, and the mulching is a benefit in any event. As far as possible I would advise the planting of hardy plants in September or early in October, but of course many of them are not in condition to transplant until the fifteenth of October. Hardy Roses, Peonies, Iris and many other hardy plants give best results when planted in the fall. Trees and shrubs may be planted from the fifteenth of October until the ground freezes. Magnolias, Rhododendrons, Azaleas and many other things should be planted in the spring, so as to have a season's growth before having to endure a winter's severity; but when anything is ordered that should not be planted until spring, I always advise my customers of it.

J. WILKINSON ELLIOTT

LANDSCAPE ARCHITECT

HORTICULTURAL BUYER'S AGENT

TELEPHONES

1078 Court (Office)

Colfax Station (Experimental Grounds)

CARNEGIE BUILDING

PITTSBURG, PA.

Terms of Payment

My terms of payment are invariably cash on delivery, which does not mean that I ship C. O. D., as I will not do so under any circumstances. I deliver the goods and mail bills at the same time, and expect payment within a few days. People unknown to me will please send references with their order.

PRICES

Prices in this list are made subject to stock offered being unsold when ordered.

GUARANTEES

I guarantee all nursery stock furnished by me to be first-class, true to name and delivered in good condition when shipped by express. Stock is shipped by freight at purchaser's risk, unless otherwise agreed upon.

I DO NOT GUARANTEE STOCK TO GROW, OR RESULTS IN ANY WAY. NO COMPLAINT WILL BE ENTERTAINED THAT IS NOT MADE IMMEDIATELY UPON RECEIPT OF STOCK.

There are so many causes for failure over which I have no control, that I can assume no responsibility after stock is delivered in good order. Poor soil, unfavorable weather, ignorant or careless culture all contribute to failure and all are beyond my control.

A Catalogue as comprehensive as this must of necessity offer some varieties of difficult culture, and when these are ordered, I presume the people ordering them have the knowledge needed for their culture. Successful gardening requires knowledge, enthusiasm and perseverance, and these I cannot supply, but I will be glad to make selection for the "can't-be-killed" class of plants for people who wish them.

IMPORT ORDERS

Import orders are taken subject to failure of crops.

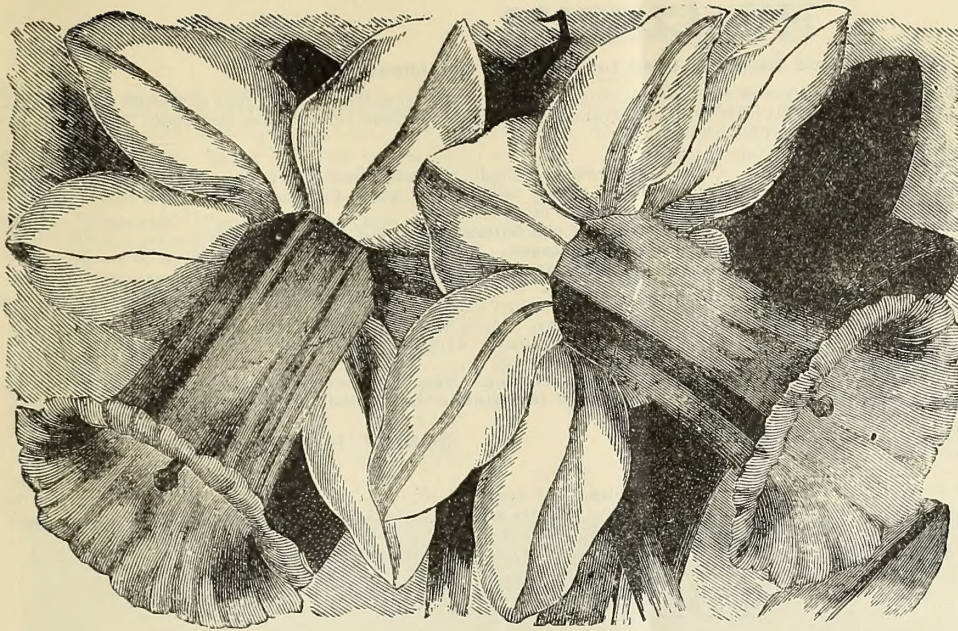
SHIPPING DIRECTIONS

Please give explicit shipping directions, stating whether stock is to be shipped by freight or express, and by what route. Early orders for trees and shrubs can be generally shipped safely by freight, but plants will be sent by freight at the risk of the purchaser only.

UNITED STATES AND AMERICAN EXPRESS SHIPMENTS.—My Pittsburg shipping is all done from Cheswick, a local station which is an exclusive Adams Express office. I can and do make shipments by American and United States Express by forwarding packages to Pittsburg, but this causes a delay of about two days. This makes no difference to shipments of bulbs, trees and shrubs, but is apt to cause damage to plants when shipped during hot weather.

CITY OFFICE.—The character of my work is such that I am rarely in my office, and clients and customers desiring to see me personally should write or telephone, making an appointment. My city office in the Carnegie Building is for appointments only and I am never to be found there except by appointment.

Dutch Bulbs



Narcissus, Bicolor Empress

out in masses. Height, 2 to 3 feet. Flowers of enormous size, on strong, graceful stems, and the most durable of all Tulips, as it holds its beautiful color and keeps perfect for a long time, flowering in May. Color rich crimson-scarlet, with glittering blue-black center. There is no Tulip, no matter how high-priced, that will give as much satisfaction. There are many Tulips sent out under this name that are not the true variety. I have secured the best stock in Holland, and I guarantee that every bulb I send is the true major variety. One of the good qualities of this Tulip is that it can be used for permanent planting and will improve year after year. 30 cts. per doz., \$1.85 per 100, \$14 per 1,000.

A GREAT TULIP, Gesneriana (Hortensis)

The tallest, largest-flowered and showiest of all Tulips for bedding and the most durable of all Tulips, as it

Narcissus, Empress

For several seasons I have been making a specialty of *Bicolor Horsfieldii*, and it is certainly one of the grandest of Daffodils, but with one weakness. The bulbs are liable to disease and sometimes decay in the packages while in transit. *Narcissus Empress* is simply an improved *Bicolor Horsfieldii*, larger and stronger and finer in every way and entirely free from disease. It has always been a very high-priced variety, but a favorable purchase made in Holland this summer enables me to offer it at about the same price as *Bicolor Horsfieldii*.

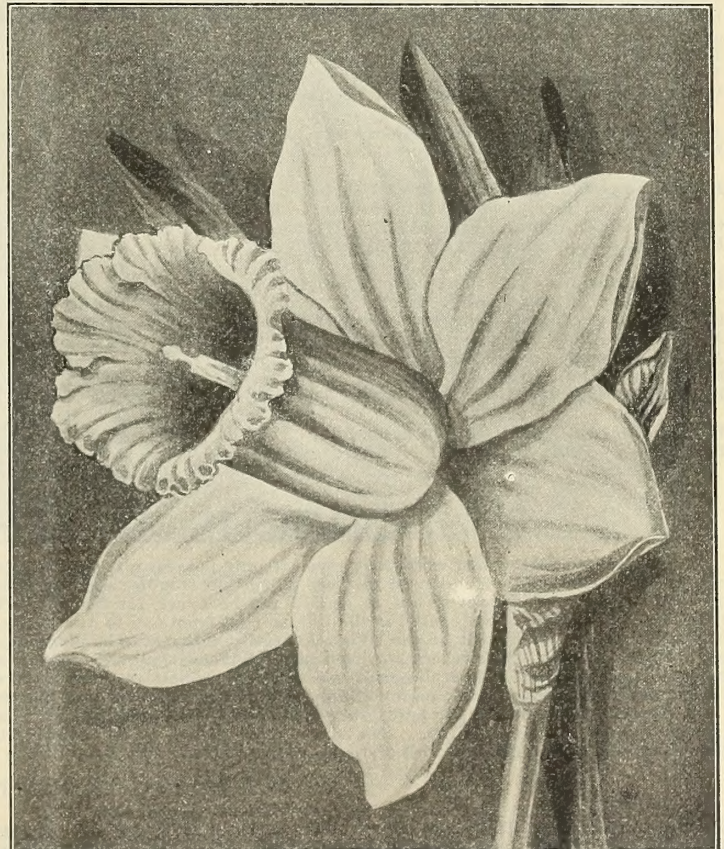
Narcissus, Bicolor Empress

(THE QUEEN OF DAFFODILS)

Very large flowers of pure white, with rich yellow trumpet, strikingly beautiful, fine for out-of-doors or for forcing. This is the finest of all Daffodils and one of the most beautiful hardy flowers grown. It should be planted where it can remain permanently. It will increase in size and beauty year after year. It really gives me great pleasure to offer this grand Daffodil at the following low prices, and it can now be planted by the hundreds and thousands, as it deserves to be. A few years ago it was selling in Holland at \$40 per 100, when I thought it one of the most beautiful hardy flowers in cultivation, an opinion I still hold, after growing it in my garden ever since. It is an acquaintance that improves with age. The bulbs I offer are from one of the most famous growers in Holland, who has made a specialty of this Daffodil since its introduction. 75 cts. per doz., \$4 per 100, \$36 per 1,000.

Narcissus, Emperor

This is the largest and finest deep yellow trumpet-flowered Daffodil in cultivation, and is really superb, both in foliage and flower. A few years ago it was selling at \$25 per 100, and last year I sold it at what was considered a very low price, \$7 per 100; but a contract made in Holland this year enables me to offer fine bulbs at the following prices: 75 cts. per doz., \$3.50 per 100, \$32 per 1,000.



Narcissus, Emperor

HYACINTHS

Mixed Hyacinths Should Never Be Used for House or Greenhouse Culture

Ready about September 15 to 20. The prices quoted include packing, and bulbs will be shipped by express or freight, from Pittsburg, charges to be paid by customers. The prices of Hyacinths have advanced sharply in Holland this season, and retail prices will be much higher this fall. Comparatively, my prices are lower than ever.

SINGLE MIXED HYACINTHS

	Each	Doz.	100
Single Red and Dark Red	\$0 07	\$0 70	\$4 50
" Pink	07	70	4 50
" White	07	70	4 50
" Pure White	08	80	5 00
" Dark Blue and Purple	07	70	4 50
" Light Blue	07	70	4 50
" Yellow	07	90	6 00
" All Colors	07	65	4 00
Double, All Colors	07	70	4 50

SINGLE NAMED HYACINTHS

The following Hyacinths are a selection of the best varieties for house culture. The bulbs are of the best quality and size.

Amy. Bright carmine; fine spike	\$0 10	\$1 10
Baron von Thuyll. Very fine; pink; extra large spike	12	1 25
" Blue. Large truss; dark blue	12	1 30
Baroness von Thuyll. Early; pure white	15	1 35
Charles Dickens. The best pink; extra large spike	18	1 75

	Each	Doz.
Gigantea. Blush; splendid truss	\$0 12	\$1 25
Ida. Citron yellow; fine spike; the finest yellow Hyacinth in cultivation	25	2 10
King of the Blues. Splendid; finest dark blue	15	1 50
La Grandesse. Purest white; extra fine	20	2 00
La Peyrouse. Clear light blue	15	1 40
Leviathan. Beautiful blush pink; large bells and spikes; a most distinct and charming variety	16	1 75
Lord Derby. Light blue; one of the very finest	25	2 40
Lord Macaulay. Very fine; bright red; extra large spike; one of the best	15	1 40
Paix de l'Europe. Very fine; snow white; long truss	15	1 50
Queen of the Blues. Light blue; silvery appearance	20	1 75

ROMAN HYACINTH

	Doz.	100	1,000
White. Selected; 12-15	\$0 70	\$5 00	\$39 00
" Extra selected; 13-15	80	5 50	42 00
Pink	70	5 00
Blue	55	4 00

TULIPS

MIXED TULIPS

	100	1,000
Fine Mixed Single. Quality equals that generally sold	\$ 80	\$6 50
Extra Fine Mixed Single. Extra selected	1 10	9 00
" " Double. " " " "	1 50	12 00

SINGLE NAMED EARLY TULIPS

The letters A, B and C indicate the proportional earliness of the varieties if planted outdoors. A and B may be used together for bedding purposes, but those marked C are later. The numbers preceding names show the height of growth in inches. Those marked F after the name are best for forcing in the house or greenhouse. The following are the very best varieties of single Tulips in cultivation, and all will be found extremely effective for bedding.

	Doz.	100	1,000
A 8 Canary Bird. Fine, clear yellow. F.	\$0 30	\$2 00	\$16 00
B 8 Chrysolora. Large; golden yellow; best yellow for outdoors. F.	30	1 75	13 50
B 6 Cottage Maid. White, edged with rose; extra fine; lovely; splendid for bedding. F.	30	1 75	13 50
C 9 Couleur Cardinal. Fine red	50	3 00	24 00
B 8 Joost von Vondel. Large cherry red and white; splendid. F.	25	1 50	10 50
B 9 Keiskerkroon. Red and gold; large and showy; a grand Tulip. F.	20	1 70	13 50
B 9 La Reine (Queen Victoria). Rosy white. F.	25	1 50	10 50
A 8 Pottebakker. White; pure, best white. F.	35	2 25	15 00
A 8 Rembrandt. Scarlet; fine	35	2 00	15 00
B 8 Rosa Mundl. Rose and white. F.	25	1 50	10 50
B 5 Rose Crisdelin. Beautiful pink; a splendid sort. F.	30	2 10	18 00
B 8 Standard Silver. Crimson and white. F.	35	2 00	15 50
B 8 Yellow Prince. Golden yellow; sweet-scented	30	1 75	14 00

DOUBLE NAMED TULIPS

The following two varieties of double Tulips described below are the most showy bedding Tulips that can be planted, and continue for an unusually long time in perfection.

	Doz.	100	1,000
A 8 Imperator Rubrorum. Extra large; brilliant scarlet; fine for forcing, and one of the grandest for bedding	\$0 40	\$2 75	\$22 00
B 7 Rex Rubrorum. Similar to above, but later; bright scarlet; splendid bedding sort; lasts a long time in perfection	35	2 00	17 75

PARROT TULIPS

Parrot Tulips sometimes do not bloom satisfactorily owing to improper planting. They like a light, sandy soil, shallow planting and a sunny location.

Parrot Tulips do not receive the attention they deserve. They belong to the late- or May-flowering Tulips, and have immense attractive flowers of singular and picturesque forms, and brilliant and varied colors. The petals are curiously fringed or cut, and the form of the flower, especially before it opens, resembles the neck of the parrot. They form extravagantly showy flower-beds, are of endless variety of form and color, and should be grown in every flower-garden in quantities. The Parrot Tulips I import are from the most famous grower of these in Holland, and very superior to those usually sent out.

	Doz.	100
Fine Mixed	\$0 25	\$1 50
Perfecta. Yellow and scarlet	35	2 00
Cramoise Brilliant. Scarlet; finest of all	35	2 50
Lutea Major. Yellow; very fine	35	2 00

CROCUS IN THE GRASS

There is no reason why everybody, even if only possessor of the smallest strip of grass, should not have it filled with Crocus. The cost is but a trifle, and once planted they are no further trouble, and bloom beautifully year after year, and do not interfere with the mowing or care of the lawn whatever, but it should not be mown for two weeks after flowering of Crocus, and it does not need mowing earlier than this. They should be planted in the fall, and set from one to two inches below the surface of the ground. They can be planted with a narrow trowel or stiff-bladed knife. When a large quantity is to be planted a very convenient implement can be made in the following manner: Take a piece of 1 1/4-inch brass or iron pipe 15 inches long; grind one end of it quite sharp. By pushing this pipe into the ground the proper distance, it will cut out a core of sod and leave a hole to receive the Crocus bulb. By having a rod to fit the inside of the pipe, the core of sod can be forced back on top of the bulb and leave no trace of the work.

The Crocus is one of the first flowers to bloom in the spring, and it is no unusual sight to see the ground covered with snow and the Crocus in bloom at the same time. They are entirely hardy, do not deteriorate, and may be left undisturbed for years. It is a good plan to plant Tulip and Hyacinth beds full of them, as they bloom and are out of the way before the other bulbs flower.

SELECT NAMED CROCUS

	100	1,000	100	1,000
Baron von Brunow. Dark blue	\$0 65	\$5 75	\$0 60	\$5 00
Grand Liliac. Lilac; very early and very fine	80	7 00	85	7 50
Madam Mina. Light blue, striped; very early; extra fine	65	5 50	75	6 25
Mont Blanc. White; best	80	7 00	65	5 50
Large Yellow. Mammoth bulbs	85	7 50		
Sir John Franklin. Large; dark purple	75	6 25		
Sir Walter Scott. Finest Striped	65	5 50		

NARCISSUS

	Per doz.	100	1,000
Alba pleno odorata (Double Poeticus). Pure white, resembling a gardenia; sweet-scented; fine for outdoors or forcing	\$0 18	\$1 10	\$9 00
Barri Conspicuus . Broad primrose petals and elegantly expanded crown, heavily stained orange-scarlet; extra fine	35	2 00	
Bicolor Empress . Pure white perianth, with yellow trumpet; extra large, superb flower. This variety is an improved Bicolor Horsfieldii, and entirely free from disease.....	75	4 00	36 00
Emperor . The largest Daffodil in cultivation; golden yellow; superb. This Daffodil should be in every collection; it is really a grand variety	75	3 50	32 00
Golden Spur . Large, deep yellow trumpet, with brim expanding like Maximus, and large spreading, full, deep yellow petals. This is one of the very largest and most beautiful Daffodils in cultivation, and should be used freely, both for outdoor culture and for forcing	75	3 50	

	Per doz.	100	1,000
Incomparabilis Cynosure . Large sulphur-white petals; cup also sulphur-white, stained with orange-scarlet; very fine.....	\$0 25	\$1 15	
Incomparabilis alba Stella . Large white perianth, with yellow cup; a most charming and lovely variety either for outdoors or forcing....	25	1 00	
Incomparabilis Sir Watkin (The Welsh Giant Daffodil). Very large petals of a rich sulphur-yellow; large cup; yellow, tinged with orange; immense flowers, sometimes 5½ inches across..	75	4 00	
Poeticus (Pheasant's Eye). The well-known Poet's Narcissus	15	65	\$4 50
Poeticus Ornatus . Improved Poeticus. Can be forced earlier and blooms earlier outdoors...	20	1 35	10 00
Princeps (Giant Irish Daffodil). Primrose perianth, with yellow trumpet; extra fine	25	1 25	10 00
Van Sion (Double Yellow Daffodil). One of the best forcing sorts; extra large fine bulbs, and are not mixed with the inferior greenish flowered variety usually sold.....	25	1 85	17 00



Narcissus Bicolor Empress, Naturalized in the Grass (See page 3)
From "The Garden"

This may be considered rather a high-priced Daffodil for planting in the grass, but the effect produced is so lovely and it is so hardy and vigorous and increases so rapidly that nothing can be planted that will be more satisfactory, and as I control the best stock of it in Holland I can make a specially low price in spite of the 25 per cent duty now levied on bulbs. If planted in orchards, meadows or any place where the grass is not mown by a lawn-mower these Daffodils will increase in quantity and beauty year after year. Where they are planted the grass must not be mown before the middle of June, so that the bulbs have had time to ripen before the tops are cut off. Price, \$4 per 100, \$36 per 1,000.

LILY-OF-THE-VALLEY

(Ready in November)

	Per 100	1,000
Pips	\$2 00	\$12 50

These pips are excellent for establishing plantations outdoors, as well as for forcing.

FREESIA REFRACTA ALBA

This charming flower is one of the most satisfactory bulbs that can be forced. It is certain to flower either in the conservatory or house,

	Per doz.	100	1,000
Large bulbs.....	\$0 25	\$1 25	\$7 00
Mammoth bulbs.....	35	2 00	15 00

Fall Planting of LILIES

The great cause of failure and disappointment in planting Lilies is that they are kept out of the ground too long. The Auratum, Rubrum and Album, the most effective and desirable of all Lilies, are imported from Japan in the fall, and usually do not arrive in this country until December, and, of course, cannot be planted outdoors until the following spring. This long exposure greatly weakens the bulbs, and the flowers are not satisfactory. Never buy Lilies that are offered for sale in seed or floral stores; they are so weakened by exposure that they are worthless. This fall I am importing an enormous quantity of Lilies from Japan, and instead of having them come by the slow, but inexpensive, all-water route, they are shipped by fast steamer to Canada, and from thence by special tea train, which enables me to have the bulbs in Pittsburgh in October. Immediately upon their arrival they will be delivered to my customers, in ample time for planting this fall.



Bloom of *Liliun auratum*

Formerly I guaranteed October delivery of Japanese Lilies, and until the fall of 1889 always succeeded in delivering them in October, sometimes by the 10th of that month, but that fall I received no Lilies from Japan until the middle of November, and some did not come until December. Last fall I again received Lilies early in October, and all orders were filled in time for fall planting. This year I have made contracts requiring October delivery, with penalties for failure; but while I fully expect to deliver all Japanese Lilies in ample time for fall planting, I will not guarantee it. In the event of bulbs not arriving in time for fall planting, I will have them repacked in sand and stored in a cold cellar until spring, and deliver them as soon as the weather will permit. Lilies handled in this way will give just as good results as if planted in the fall.

Whenever delivered, I guarantee Lily Bulbs to be sound, in first-class condition, true to name and strictly first-class in every respect.

I have gone to considerable trouble to give my customers the opportunity of planting Japanese Lilies under the most favorable conditions, for I know of no flowers that are more strikingly beautiful and effective, or that will give more pleasure and satisfaction to the planter. I am not only supplying bulbs of very superior quality, but I am also selling them for one-half regular retail prices, which you can confirm by referring to any seedsman's or plantsman's catalogue you may have at hand.

Lilies like a light, rich, well-drained, but moist soil, and a partially shaded location. If planted in full exposure to the sun, the bed should be carefully mulched with two or three inches of rotted manure, leaves, sphagnum or moss. They thrive and are very effective when planted thickly among Rhododendrons, or Azaleas, and may be used to advantage in any open spaces that may be in the shrubbery. Bulbs should be planted six inches deep and care taken that no manure comes in direct contact with them. Planted in quantity, they may be had in bloom from June until frost, and bloom freely the first season after planting.

Rubrum, Melpomene, Album, and many other Lilies will thrive and increase in almost any soil, but unless the conditions are very favorable, Auratum Lilies deteriorate and a percentage will be lost every year; but they are so truly splendid, and are so inexpensive at the low price at which I offer them, that they will be found to be the best garden investment that can be made. Try these Lilies, and send your order at once, so that they can be sent to you immediately upon their arrival from Japan. Longiflorum Lilies are similar in appearance to the Bermuda Easter Lilies, but are much more satisfactory for outdoor planting, as they are perfectly hardy.

PRICES OF LILIES

These prices include all charges except freight or express charges from Pittsburgh. The measurements given refer to circumference of bulbs, but the Japanese evidently use an elastic tape, as the bulbs never quite come up to the measurements given. I give these sizes as they are generally used by the trade.

	Per doz.	100
Auratum. 7 to 9 inches	\$0 85	\$6 00
9 to 11 inches	1 50	10 00
11 to 13 inches	2 50	18 00
11 to 13 inches, selected bulbs	3 00	21 00
13 to 15 inches, monster bulbs. Very scarce. This size does not arrive until November	3 75	26 00
Longiflorum. The Longiflorum has large, pure white, trumpet-shaped flowers like the Bermuda Easter Lily, but is perfectly hardy. 5 to 7 inches	60	3 00
7 to 9 inches	1 00	6 50
9 to 10 inches	1 75	11 00
Speciosum album. 7 to 9 inches	1 25	8 50
9 to 11 inches	1 50	10 00
11 to 13 inches	2 50	13 00
" Melpomene. Similar to Rubrum, but more brilliant in color. 7 to 9 inches	1 25	7 50
9 to 10 inches	1 60	10 00
" rubrum, or roseum. Pink. 7 to 9 inches	85	6 50
9 to 12 inches	1 35	9 50
Monster bulbs	2 00	13 00

RARE VARIETIES OF AURATUM LILIES

	Each	Per doz.
Auratum vittatum rubrum. Magnificent flowers; 10 to 12 inches across; clear, waxy white, with broad crimson stripe through the center of each petal.	\$0 75	\$7 60
Auratum pictum. A very choice variety; pure white, with red and yellow band through each petal.	35	3 50
Auratum Wittel. A magnificent Lily; immense flowers of the purest white, with a wide yellow stripe through the center of each petal; very tall growing and free-blooming	75	7 50



Liliun speciosum album

AURATUM LILIES, continued

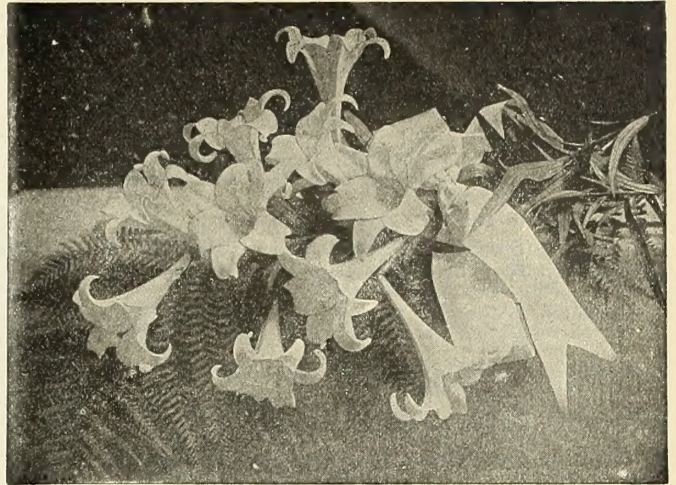
	Each	Per doz.
Auratum Macranthum. A grand variety of remarkable strength and vigor; immense pure ivory white flowers with a golden band through each petal. 7 to 9 inches.....	\$0 35	\$3 50
Large bulbs, 8 to 10 inches.....	45	4 50
Auratum Virginalis alba. Exquisitely beautiful; large flowers of the purest white, with a narrow band of yellow through center of each petal.....	50	5 00
Auratum platyphyllum. A remarkably large Lily of great vigor.....	35	4 00

OTHER JAPANESE LILIES

	Each	Per doz.	100
Alexandrae. A Japanese Lily with flowers similar to Longiflorum, but very much larger and finer in every respect; very sweet-scented.....	\$0 35	\$3 50	\$25 00
Batemanni. Bright apricot flowers in July		1 25	8 00
Hansoni. A handsome variety, flowering in June; has bright orange-yellow flowers.....	50	5 00	36 00
Henryi. A new Japanese Lily that has made a sensation in Europe. It has the same form and general appearance of the Speciosum varieties, but the flowers are a bright orange-yellow.....	65	6 50	45 00
Krameri. Distinct from all other Lilies; large flowers of a soft, beautiful rose color.....	1 25		9 00
Leichtlini, Yellow. Neat and elegant habit; flowers pure canary-yellow, with crimson spots.....	30	3 00	
Leichtlini, Red. Orange-red, with crimson spots.....	30	3 00	
Rubellum. This is a beautiful new Lily, similar to Krameri, but of much more vigorous constitution. It is unknown in this country, but in England, where it has been fully tested, it is highly praised and it seems likely to become as popular as the Speciosum varieties.....	25	2 25	15 00

EUROPEAN-GROWN LILIES

	Per doz.	100
Brownii. An extremely handsome, hardy Lily, with large, trumpet-shaped flowers like those of Longiflorum or the Bermuda Easter Lily; pure white inside, but the outer part of the petals is a beautiful purplish brown. This is a very choice Lily, but good bulbs of it are scarce. I have succeeded in finding a fine stock of extra fine bulbs in Europe, which are very superior to the Japanese stock offered. This Lily should be grown in every garden.....each, 50 cts....	\$5 00	\$40 00
Candidum (Madonna, or Annunciation Lily). This is the old-fashioned garden Lily, and one of the most beautiful. It should never be planted later than September 15, as it makes a fall growth.....	1 50	10 00
Excelsum. Another choice but scarce Lily. The stately form, beauty of color and delightful fragrance of this variety has made it a favorite wherever grown. It grows 4 to 6 feet high, and produces six to twelve flowers of delicate light buff color, blooming in June and July.....each, 45 cts....	4 50	35 00
Thunbergianum (elegans) aurantiacum. Dark orange-brown. The Thunbergianums are all of the easiest culture. Bloom in June.....	75	5 00
Thunbergianum aureum. Yellow; dwarf.....	65	4 50
" fulgens. Red, shaded with orange; one of the best.....	2 25	13 00
" Van Houttei. Very large; scarlet-purple; very fine.....	1 25	6 75
" In Fine Mixtures	75	4 00
Tigrinum flore pleno. Double Tiger Lily. The only double Lily worth growing.....	70	5 00
" Simplex. The well-known single Tiger Lily. Of the easiest culture, and worthy of general planting on account of its stately habit and fine effect in the landscape.....	60	4 00
" splendens. Improved Single Tiger Lily.....	65	4 50
Umbellatum erectum. Scarlet, with brown spots....	75	5 00
" grandiflorum. Orange, brown spots....	75	5 00
" Incomparable. Dark red, brown spots. 1 00		6 50
" In Fine Mixture	90	6 00
Wallichianum. A magnificent Lily, with immense, white, trumpet-shaped flowers, suffused with yellow. Very scarce.....each, \$1.50..		



Lilium longiflorum (See preceding page)

NATIVE AND AMERICAN-GROWN LILIES

	Per doz.	100
Canadense flavum. Our dainty, beautiful native Lily; graceful and charming yellow flowers.....	\$1 00	\$7 00
" rubrum. Red flowers.....	1 00	7 00
" Mixed	75	6 00
Columbianum. One of the most elegant and graceful of Lilies; orange-red flowers, spotted with crimson....	3 00	
Elegans, "L. Joerg." Apricot spotted.....	1 75	11 00
" "Midnight." Crimson-black; fine.....	2 50	16 00
Crayi. A small native Lily; very dainty and rare. The bulbs are quite small.....each, 50 cts....		5 00
Humboldtii. Orange-red, with claret colored dots.....	2 00	
Philadelphicum. Native Lily. Orange-red, with black spots.....	1 00	7 00
Superbum. In a collection of best plants of all countries, our native Superbum Lily would deserve a first place. In deep, rich soil it often grows eight feet high, with twenty to thirty flowers. It is of the easiest culture, and may be grown as a wild flower in any swampy or rough part of a place where the grass is not mown. I have seen it growing by the thousands in swamps and meadows, but it well repays the highest garden culture. Extra selected bulbs.....	1 25	6 00
Tenuifolium. A beautiful graceful Lily, with crimson reflexed flowers. One of the choicest Lilies, but dies out in a year or two, but can be renewed from seed; blooms in June.....	1 75	12 00
Wallacei. Very free-flowering, hardy and showy; each bulb sends up many stems which bear several lovely vermilion-orange flowers.....	1 00	6 00
Washingtonianum. Very fragrant flowers, changing from pure white to various shades of purple or lilac... 2 00		

Special Offer of Hansoni Lilies

Hansoni is one of the most beautiful and satisfactory Lilies that can be grown. It is perfectly hardy and reliable and free from disease, and once planted is a permanent addition to the garden. A favorable purchase made in Japan enables me to offer fine bulbs at about one-half usual prices. "This Lily is one of the best of the Martagon group. Unsurpassed in vigor of growth and beauty by any other Lily. The flowers are large, of a bright rich yellow, tinged orange and spotted maroon, with thick wax-like petals; very robust and fine." 50 cts. each, \$5 per doz., \$36 per 100.

True Bermuda Easter Lilies

Lilium Harrisii. (Ready in August)

It is impossible to obtain Bermuda Lily Bulbs that are entirely free from disease. I get the best bulbs obtainable, but cannot guarantee results.

This Lily is now so well known that it needs no description. It is undoubtedly one of the most popular flowers ever used for forcing. The bulbs I supply are of the highest quality obtainable, and are perfectly true, and not mixed with *Lilium longiflorum*. It cannot be grown outdoors unless extremely well protected in winter. If a Lily of this character is desired for outdoor planting, Longiflorum should be used.

Bulbs 5 to 7 inches in circumference.....	Per doz.	100
.....	\$1 50	\$8 00
" 7 to 9 " " " ".....	2 50	16 00
" 9 to 11 " " " ".....	5 00	3 00

MISCELLANEOUS BULBS

- CHIONODOXA Lucillæ** (Glory of the Snow). 25 cts. per doz., \$1.40 per 100, \$10.50 per 1,000.
- GALANTHUS nivalis** (Single Snowdrop). 15 cts. per doz., 95 cts. per 100, \$7.75 per 1,000.
- IRIS Anglica** (Mont Blanc). Pure white; large and fine. This is the variety grown so largely in England for cut-flowers. 65 cts. per doz., \$4 per 100.
- I. Anglica, Fine Mixed.** 25 cts. per doz., \$1.50 per 100.
- I. Hispanica** (Spanish). 100 roots in 20 named varieties. \$2 per 100.
- I. Hispanica, Blanche Fleur.** Pure white; the best white Spanish Iris. 25 cts. per doz., \$1.25 per 100.
- I. Hispanica, William I.** The best yellow, and the variety so largely grown for Covent Garden Market in London. 25 cts. per doz., \$1.25 per 100.
- I. Hispanica, Count of Nassau.** The finest dark blue. 25 cts. per doz., \$1.25 per 100.
- I. Hispanica, Louise.** Beautiful shade of light blue. 25c. per doz., \$1.25 per 100, \$9 per 1,000.
- I. Hispanica, Fine Mixed.** 15 cts. per doz., 55 cts. per 100.

- MILLA Uniflora.** This charming spring-flowering bulb is almost unknown in this country, but I know of nothing lovelier. I first saw it in the garden of the late Mr. Chas. A. Dana, "Dosoris," Long Island, and was delighted with it, as I am sure every one will be that tries it. It likes a rather moist soil and should be planted where it can remain permanently. It can also be bloomed in the house with the same treatment as hyacinths. For this purpose several bulbs should be planted in a 6- or 7-inch pot. Charming white, star-like flowers with beautiful foliage, which covers the ground like a carpet. One of the choicest hardy bulbs, and should be used in every garden. 20c. per doz., 75c. per 100.
- M. Uniflora violacea.** Same as above, with violet flowers. 25 cts. per doz., \$1 per 100.
- SCILLA Sibirica.** Finest sky blue. *Scilla Sibirica* is one of the loveliest spring flowers. It has a color almost as deep as the sky itself. It is quite hardy, and flowers outdoors at the same time as the snowdrop, in front of which it has a charming effect. It is fine for planting in the grass. If planted in pots and kept indoors it may be had in bloom as early as Christmas. Its magnificent bright blue color makes it suitable for any decoration whatever. 20 cts. per doz., \$1.40 per 100, \$10.50 per 1,000.

Gardening Books and Papers.

I am sorry to say it, but there is at present no gardening paper published in America worthy of consideration. For a few years we had an excellent paper, well suited to the needs of our country. Its editor was able and enthusiastic, and had the business management been as intelligent as the editorial the success of the paper would have been unqualified; but the editor was allowed to resign and the paper dropped into the uninteresting rut occupied by its contemporaries. This is preliminary to recommending the English paper, **The Garden**, which is beyond question the best gardening paper published in the world. It is a weekly, well edited, well printed, and freely illustrated with pictures made in the best gardens in England. Each number also contains a fine colored plate of flowers of some fine tree, shrub, plant or bulb, so that it is really a cheap paper at \$1.50 per year. I will be glad to forward subscriptions to the London office for my customers. Since the above was written a new magazine entitled **Country Life in America** has been published by Doubleday, Page & Co., of New York, and edited by that high authority, Prof. L. H. Bailey, of Cornell University. This is hardly a gardening magazine, but considerable space is devoted to gardening matters and is altogether the most beautiful and interesting magazine that I find on my library table. This magazine has been run on a liberal scale, the publishers believing that there is ample field for a magazine appealing to the better class of country-lovers. I am glad to say that their experience has borne out this hope, and the magazine has prospered so that it now has a regular circulation of above 50,000 copies. Its continuation on its present scale should be a satisfaction to every country-lover and every person connected with the country. The price is \$3.00 a year, it is printed on coated paper, most superbly illustrated, and in every way worth what the publishers charge. An English paper that gives me a great deal of pleasure is **Country Life**. It is a 32-page weekly, exclusive of advertisements, and is beautifully printed and illustrated. It treats of all pursuits and sports of country life, but is especially interesting on account of its illustrated descriptions of English country places, one of which it publishes each week, showing house, gardens and lawns. My attention was called to this paper recently by one of my clients, and I was so well pleased with it that I bought all the back numbers as well as subscribing. The price for American subscriptions is \$10.00 per year. I will forward subscriptions if desired.

The best book on gardening ever published, and worth more than all other books on gardening and landscape gardening, is Wm. Robinson's **The English Flower Garden**, now in its eighth edition. Whatever success I have made as a landscape gardener I owe to the inspiration of this book. It not only teaches good gardening, but, what is quite as important, condemns bad, giving reasons that are convincing for both. This book has done more to improve the gardening in England than all other influences combined, and I wish it were in my power to secure its reading by all thoughtful, intelligent people in this country. The book is very comprehensive, treating of the arrangement of various styles of gardens, and contains descriptions of almost every tree, shrub, plant and bulb of value used in ornamental gardening. It is profusely illustrated by the best English artists with pictures made in hundreds of English gardens. The price is \$6.00. It may be ordered from any bookseller, or I will forward it on receipt of the price.

A delightful book recently published in England is **Wood and Garden**, by Miss Jekyll. The book hasn't much to say about culture, but is full of good suggestions for arrangement, and the illustrations, from photographs made by the author, are a delight, and should do much toward the banishment of ugly and inartistic gardens. It is charmingly written by an enthusiastic amateur, and should be read and owned by every lover of a good garden as well as by those who know nothing of the pleasures of a garden. The book can be obtained through any bookseller. A later book written by Miss Jekyll, **Wall and Water Gardens**, tells most interestingly of two of the most fascinating phases of gardening. The pictures are superb and should do much to improve the gardens of England and America. Still another book by Miss Jekyll is **Lilies for English Gardens**. A friend complains that he finds no good lily illustrations. Well he will find them here and the best and most exhaustive work on lilies yet written.



Title Illustration from "Country Life in America"

Formation of Lawns from Seed

The ground should be thoroughly drained and well prepared. The soil ought not to be too rich, as a rapid growth is not wanted in the grasses of a lawn, but the surface should be as much alike in quality as possible. After sowing, the ground should be rolled, in order to press the seed firmly into the soil. The proper time to sow grass seed depends, of course, upon the latitude. In the Central and Eastern States from September 15 to October 15 is the best time. Seed may also be sown in the spring, provided it is done early enough to secure a good, strong growth before the hot, dry weather of summer sets in. The sowing should be done when the ground is moist, or before an expected rain, and a subsequent rolling is always advisable.



Rolling.—As soon as the frost is out of the ground in the spring the land should be gone over with a heavy roller. Winter frosts loosen the soil, and rolling is necessary to compress it again. If grass seed is to be sown, this should be done first and the rolling immediately afterwards. Frequent rollings are recommended.

Mowing.—All turf-forming grasses are improved, both in vigor of root growth and fineness of texture, by frequent mowings. It is impossible to say just how often the grass should be mown, as that depends upon the rate at which it grows. Too-close cutting should be guarded against, however, especially during the hot summer months, when the roots require some top growth to protect them from the burning sun. A good top growth is also necessary to protect the roots from the severe winter frosts. Mowing should, therefore, be discontinued in time to let the grass grow pretty long before winter sets in.

To Grass a Bank or Terrace.—For each square rod take a pound of lawn grass seed and mix it thoroughly with six cubic feet of good, dry garden loam. Place in a tub and add liquid manure, diluted with about two-thirds of water, so as to bring the whole to the consistency of mortar. The slope must be made perfectly smooth, and then well watered, after which the paste should be applied and made as even and as thin as possible.

PRICES OF GRASS SEED

I can supply the very best quality of Mixed Lawn Grass Seed for \$2.50 per bushel. This is exactly the same quality of seed that is usually sold for \$5 per bushel as Central Park Mixture, or under some other fancy name. Grass seed weighs only 14 pounds per bushel, and can be shipped inexpensively by express. I do not supply less than one-half bushel. Special prices quoted for large quantities. Grass seed is sold by weight, 14 pounds for a bushel, but 14 pounds of clean grass seed will not fill a bushel. Grass seed can be sown advantageously in the fall, preferably in September. Prices: ½ bushel, \$1.50; 1 bushel, \$2.50; 10 bushels, \$2.25 per bushel. Small quantities shipped from here; large quantities from Cincinnati.

Low Prices for Hydrangeas

SHIPPED FROM STATION NEAR PITTSBURG

No more popular plant or shrub has ever been sent out than *Hydrangea paniculata grandiflora*, and I take great pleasure in offering my customers a large stock of splendid vigorous plants at such extremely low prices that it will enable them to plant this effective shrub in quantity.

People who have only seen this *Hydrangea* grown singly as specimens have no conception of how beautiful and effective they are when planted in masses. They are planted in this way at Newport, R. I., which is famous for its fine gardens, and almost as famous for its *Hydrangeas*. These *Hydrangeas* can be planted in connection with other shrubbery or in isolated beds, in the same manner as Cannas, Caladiums or other strong-growing bedding plants. They are perfectly hardy, and, once planted, they are a permanent addition to the lawn or garden. When grown in beds or groups they should be planted about two feet apart, in very rich soil, which should be liberally enriched annually with rotten stable manure, and in the early spring, before they commence to grow, cut back so as to leave only two or three inches of the new growth of the previous season, and if extremely large flowers are desired, cut out some of the weaker shoots after growth has commenced. Treated in this manner they will produce enormous panicles of flowers, and the beds will be a solid mass of bloom. They bloom profusely the same season planted. Try them. You will find them more than satisfactory.

Prices good until stock is exhausted. Fall or spring delivery.

<i>Hydrangea paniculata grandiflora</i> —	25	50	100
12 to 18 inches.....	\$2 50	\$4 00	\$6 00
24 to 30 inches.....	4 00	7 00	13 00
3 feet; extra large and bushy.....	5 00	8 50	16 00

All of the above will bloom the first year, and are superior to the stock commonly retailed at 25 cents to \$1 each.

It is suggested that when smaller quantities are wanted two or three club together in ordering.

For prices on smaller quantities, see list of Hardy Shrubs.



Hydrangea paniculata grandiflora



Old Specimen Plant of Tree Peony (From the "English Flower Garden")

JAPANESE TREE PEONIES

Last spring I was invited by one of my customers to see a collection of fifty Japanese Tree Peonies in bloom that I had imported for him from Japan three years before, and if I could write a description that would give any idea of their beauty the Japanese growers would not be able to supply one-tenth of the demand for plants. I don't wonder that the Japs have a special holiday for visiting the Peony gardens, but I do wonder that we Americans, who boast of our education and refinement, should be content with the poor and commonplace bedding plants usually seen in our gardens when such superb floral creations as Japanese Tree Peonies are to be had at a small cost. I have said this before, but the truth is so important to a lover of a garden and is so little known or heeded that I must keep on repeating it. The first cost of a fine hardy plant like a Tree Peony is its only cost, and it increases in size and beauty year after year, so that a plant that may have cost only fifty cents when purchased may become one in a few years that one would hesitate to accept twenty-five dollars for. Such a plant is the Tree Peony. I have seen one that had sixty-six open flowers on it at one time, and read a description of another that had over five hundred blooms in one season. Now, when it is considered that the blooms range from eight to twelve inches across and are of the richest and most lovely shades of coloring imaginable, it can be understood what a floral wonder a Japanese Tree Peony may grow into. But one does not need to wait years for enjoyment of these flowers—a majority of the plants will bloom the first season planted and in the second season will produce from two to five flowers each. The flowers range in color from pure white to the darkest shade of purple, including all shades of scarlet, crimson, pink, some in solid colors, some curiously striped or marked. The shades of pink are the softest and most lovely imaginable.

These Tree Peonies must not be confused with common herbaceous Peonies, which are so popular; instead of dying to the ground every year they make a hard wooded growth and in time become quite large shrubs.

"The Tree Peony is one of the noblest plants available for the garden; it is quite hardy and flourishes under the simplest treatment. The smallest shrub will flower in the most astonishing manner, bearing blossoms the size of dinner plates, and the plant increases annually in size until one plant becomes a veritable bank of living flowers. The Tree Peony is valuable for isolation on lawns and for borders and in nooks backed by conifers or other shrubs. Any soil suits it and any position. It will repay those who afford it good treatment in the form of well-trenched soil and well-rotted manure, and occasional top-dressings; but it should remain undisturbed as much as possible and allowed to mature its shoots, which year by year add to the size of the plant until it becomes the grandest object in the garden. Watering well before and during flowering greatly assists in the production of large, shapely blooms, and where mild weather in the spring has brought on very early buds, protection of some kind should be given from late frosts. The plant is absolutely hardy, but where it has been induced by a mild winter to put forth early flowers, the buds get an occasional 'nip.' Flowering season: May and early in June."

I have a set of Japanese water-color drawings of these Peonies, which will be sent for examination on receipt of twenty-five cents to cover postage. These drawings must be returned, but if Peonies are ordered the amount sent for postage will be allowed on the price of the Peonies.

Fine blooming plants in 25 choice varieties, \$1 each, \$10 per dozen; extra selected blooming plants in 25 choice varieties, \$1.50 each, \$15 per dozen.

Tree Peonies are imported to order only. They do not always arrive in time for fall delivery, and in this event will be stored and delivered early in the spring.

Named Varieties of Tree Peonies are grafted on a common single sort. Care must be taken to remove all suckers below the graft or they will choke the choice variety out in a few years.

Herbaceous Peonies

(READY IN SEPTEMBER)

I am glad that this good old-fashioned flower is becoming popular again, and if there were nothing to be obtained but the few old-fashioned sorts once seen in every garden their popularity would be well deserved, but nothing has been improved more than the Peony, and the English and Japanese growers have given us varieties that are really superb. Many of them are equal in form and coloring to the finest roses, and some are sweet-scented. Their hardiness, ease of culture and the great size and plentifulness of bloom make them extremely desirable and effective in the garden or on the lawn. They are most effective when planted in large masses of separate colors. I have made arrangements for supplying my customers with the best Peonies obtainable in America, Europe and Japan, and at the lowest prices consistent with the highest quality. September and October are best months in the year for planting Peonies.

JAPANESE PEONIES

Double and Semi-Double. In 25 varieties. These are really very choice and distinct from varieties grown in this country, and will give the greatest satisfaction. At the price nothing so fine can be obtained...ea. 60c...\$6 00 \$45 00

Single. In 25 varieties. The finest Single Peonies undoubtedly come from Japan. They are equal or superior to single sorts coming from Europe, costing three times as much. Each 70 cts., \$7.50 per doz., \$55 per 100.

	Each	Per doz.
Corona. Light rose, white center.....	\$0 40	\$4 00
Crown of Roses. Dark rose, soft rose center.....	60	6 00
Descartes. Very large flower, very brilliant clear amarant.....	50	5 00
Doyenne d'Enghein. Violet-rose and carmine.....	30	3 00

AMERICAN - GROWN PEONIES

- Agida.** Brilliant red; very free-flowering. 25 cts. each, \$2.50 per doz.
- Alba Maxima.** Extra large; white. 50 cts. each, \$5 per doz.
- Alba plena odorata.** Dwarf white. 50 cts. each, \$5 per doz.
- Alexandriana.** Very large full flower, lovely rose, shaded white and salmon. 75 cts. each, \$8 per doz.
- Alexander Dumas.** Grand flowers in clusters, very full, beautiful rose, often mixed with white and salmon. 75 cts. each, \$8.50 per doz.
- Amabilis grandiflora.** White, very large, fringed petals; fine, very sweet. 50 cts. each, \$5 per doz.
- Arthemise.** Large flower, lovely soft rose and salmon; very beautiful. 75 cts. each.
- Baron J. Rothschild.** Outside petals rose, center salmon, sweet. 35c. ea., \$3.50 per doz.
- Bayard.** Beautiful clear brilliant violet. 50 cts. each, \$5 per doz.
- Belle Donaisienne.** Large, imbricated flowers, very full, carnation and chamois, chance streak of carmine. \$1.25 each.
- Berilloz.** Large, full, globular flower, lovely currant-red and shaded amaranth; very beautiful. \$1.50 each.
- Bicolor Mad. Guerin.** Fine red, rosy center. 60 cts. each, \$6 per doz.
- Blushing Bride.** Light rose. 50 cts. each, \$5 per doz.
- Buyckii.** Large globular flower, lovely rose, center salmon-rose with silver reflex; extra fine. \$1 each.
- Candida flore pleno.** Dark red, rosy white center; extra fine. \$1.25 each, \$12 per doz.
- Caroline Allain.** Beautiful blush, center sulphur, tipped white. 30 cts. each, \$3 per doz.
- Chinensis alba.** Pure white. 30 cts. each, \$3 per doz.
- Comte de Paris.** Rose-color, center salmon-yellow, crested with large petals of lovely rose; very beautiful variety. 35 cts. each, \$3.50 per doz.



Single Japanese Peonies

AMERICAN-GROWN PEONIES, continued

	Each	Per doz.
Dr. Boisduval. Bright rose.....	\$0 30	\$3 00
Dr. Bretonneau (Verdier). Large, globular flower, large rose petals and clear white; beautiful.....	40	4 00
Duc de Cazes. Anemone form; red, center salmon.....	30	3 00
Duchesse de Nemours. Rose-pink, very large, double, sweet; one of the best.....	75	7 50
Duchesse de Orleans. Fluffy, intense rose.....	25	2 50
Dugueslin. Rosy carmine.....	40	4 00
Duke of Wellington. White, with yellow center.....	30	3 00
Eclatant. Bright carmine.....	30	3 00
Edulis. Dark red, late.....	40	4 00
Edulis alba. Large white flower, with some stains of carmine in the center; very pretty variety.....	35	3 50
Epicurie. Fine soft rose; beautiful.....	50	5 00
Eugene Verdier. Deep rosy red.....	50	5 00
Faust. Pretty anemone flower, color tender lilac, center petals very narrow, flesh shaded with clear salmon; very handsome variety.....	40	4 00
Festiva. Pure white.....	25	2 50

	Each	Per doz.
Jupiter. Dark red.....	\$0 50	\$5 00
King of Roses. Deep rose, sweet-scented.....	50	5 00
La Tulipe. Light rose, yellow center.....	60	6 00
L'Innocence. White, rosy outer petals.....	60	6 00
Louis Van Houtte. Double crimson.....	25	2 50
Madam Patti. Violet, with rose and yellow center.....	75	7 50
Mademoiselle Leonie Calot. Soft pink; extra fine.....	40	4 00
Maiden Blush. White and light rose; beautiful.....	75	7 50
Marie Lemoine. Delicate flesh, changing to white.....	1 00	10 00
Mlle. Renee Dessert. Very large flowers in clusters, beautiful lilac with silvery violet reflex; extra.....	1 00	10 00
Model of Perfection. Beautiful soft pink.....	50	5 00
Modeste Guerin. Broad flower, outside rose, center pink.....	30	3 00
Mont Blanc. Pure white.....	40	4 00
M. Chevrueil. Large, imbricated flowers, very full, beautiful lilac shaded pink; very fresh coloring.....	60	6 00
Mme. Ferard. Fine bright rose.....	25	2 50
Mme. Chaumy. Large flowers in clusters, rose shaded, large silvery border; late variety.....	35	3 50



Peony Border (From English "Country Life")

	Each	Per doz.
Festiva alba. Pure white, center carmine spotted.....	\$0 30	\$3 00
Festiva Maxima. Very large, pure white flower, with some blood-red stains in center. Tall stalks, beautiful foliage, and very free-flowering; one of the very best white Peonies in cultivation.....	75	8 00
Formosa. Pretty convex flower, sulphur-white, stigmatae lively red; very beautiful variety.....	35	3 50
Fragrantissima. Violet and rose-color, very sweet.....	40	4 00
Francis Ortegat. Dark purple-crimson, very large, fine, double and sweet.....	1 00	10 00
Fulgida. Very dark crimson; good.....	50	5 00
Celdolf. Soft red; extra fine.....	75	7 50
Georges Cuvier. Pretty purple-lilac flower, silver border.....	35	3 50
Gloire de Charles Combault. Large, globular flower, extra full; collar of large, deep pink flesh petals, those of the center very narrow, of clear salmon-carnation, shaded apricot, very large tufted petals, pink shaded carmine, a coloring of great freshness and wholly new. Many-colored variety that distinguishes itself from all others. New variety from France.....	3 00	
Golden Harvest. Nearest approach to a yellow.....	30	3 00
Gretchen. White and rose, with yellow center.....	40	4 00
Humel rosea. A splendid old sort, with deep rose flowers; one of the latest to bloom..... per 100, \$14..	25	2 50
Isabel Karlitzsky. Large, delicate rose.....	25	2 50
J. B. Rendather. Clear violet-red.....	40	4 00

	Each	Per doz.
Mme. Louise. Dark brilliant purple, self-colored, good form. 35 cts. each, \$3.50 per doz.		
Mme. de Verneville. Very pretty anemone flower, extra full; collar of large petals, those of the center very close; carnation white and sulphur, sometimes carmine; extra. \$1 each, \$10 per doz.		
Nobilissima. Fine bright dark rose. 35 cts. each, \$3.50 per doz.		
Officinalis alba (Old Double White). Blush white, early flowering. 50c. each, \$5 per doz.		
Officinalis rosea (Old Double Rose). Rich bright shining rose; very early. 35 cts. each, \$3.50 per doz.		
Old Double Crimson. This fine old Peony is very effective when planted in masses; one of the earliest to bloom. 35 cts. each, \$3.50 per doz., \$20 per 100.		
Palassi. Light rose, blush center. 40 cts. each, \$4 per doz.		
Perfection. Outside petals rose-lilac, inside purple and salmon, sweet. 50 cts. each, \$5 per doz.		
Pius IX. Dark red-purple, semi-double. 30 cts. each, \$3 per doz.		

	Each	Per doz.
Pottsi. Dark purple, sometimes semi-double.....	\$0 30	\$3 00
Purpurea. Dark glowing purple.....	35	3 50
Queen of the Whites. Extra large, pure white, very beautiful.....	1 00	10 00
R. H. Boggs. Crimson outer petals, with flesh-white center; distinct and fine.....	50	5 00
Reine Hortense. Pink, large, full, globular, and fragrant flowers.....	35	3 50
Rose Brilliant. A fine standard sort; flowers bright clear pink.....	30	3 00
Rosalinde. White, with light rose; extra beautiful.....	1 00	10 00
Rosea elegans. Delicate rose and salmon.....	30	3 00
Rubra superba. Semi-double, crimson-maroon.....	30	3 00
Rubra Triumphans. Rich brilliant glowing crimson flowers.....	30	3 00
Snowball. Pure white.....	50	5 00
Spectator. Fine large red.....	40	4 00
Splendens. Pure white with red spot; very beautiful flowers.....	1 00	10 00
Starlight. Deep pink, light center.....	40	4 00
Sweetheart. Red and white, with rose center.....	50	5 00
Tenuifolia. Same as following variety, but with beautiful single flowers.....	40	4 00
Tenuifolia flore pleno. Deeply cut fringe-like foliage; flowers bright scarlet-crimson, rare and fine.....	50	5 00

AMERICAN-GROWN PEONIES, continued

	Each	Per doz.
Wacht am Rhein. Brilliant purple shaded violet. Quite fragrant.....	\$0 30	\$3 00
White Perfection. Largest, pure white; beautiful....	75	7 50
White Queen. Pure white; extra large.....	50	5 00
Whitleyii. White, large and sweet.....	45	4 50
Wilhelmina. Fine soft rose, extra large.....	75	7 50

PEONIES FROM FRANCE

The following varieties of Peonies are coming from France and will not likely be ready for delivery before the end of October or early in November.

	Each	Per doz.
Abel Carriere. Good-shaped flowers, anemone-fawn, amaranth-violet.....	\$0 35	\$3 50
Alba Sulfurea. Very full, grand, globular flower, beautiful shape, pure white, center sulphur-yellow; extra fine.....	1 50	
Alfred de Musset. Grand flower, carnation white shaded pale salmon, rose center; extra fine.....	1 00	10 00
Alice Crousse. Large flower, lively rose, center soft rose and salmon; very beautiful.....	60	6 00
Armand Rousseau. Very pretty flower of perfect cup-form, petals rounded off very regularly; those of the center fringed and mixed with golden stamens, color clear purple-carmine; brilliant silvery reflex; bold appearance; dwarf plant, early blooming; very fine.....	1 50	
Armandine Mechin. Large flowers in clusters, very brilliant clear amaranth.....	60	6 00
Asa Gray. Large full flower, imbricated, beautiful form; carnation-salmon, powdered with carmine-lilac.....	1 50	
August Lemoonnier. Large anemone-formed flower, lively purple-violet, very brilliant.....	50	
August Mieliez. Large flowers in clusters, clear lilac and purple, center chamois and lilac.....	40	4 00
Bayard. Beautiful clear brilliant violet.....	50	5 00
Cameron. Brilliant purple-violet, shaded with velvet tints; late flowering; extra.....	1 00	10 00
Candidissima. Beautiful anemone-formed flower, very full, clear sulphur-yellow, with green heart; extra.....	60	6 00
Carnea alba. Large flower, clear carnation, center white shaded yellow; beautiful.....	75	8 00
Carnea elegans. Fine flower of perfect form; large petals, clear carnation with satin reflex mixed with small yellow petals, very fresh coloring; fine.....	75	8 00
Claire Duhais. Large, globular flower, very full, clearest pure rose, soft satin like; extra fine.....	1 25	
Couronne d'Or (Golden Crown). Large imbricated white flower, yellow reflex with stripes of carmine and golden stamens; extra fine.....	1 25	
Curiosity. Large petals of clear violet-red, those of the center transformed into golden ligules; very pretty variety.....	50	5 00
Daubenton. Compactly curled anemone-formed flower, lilac-purple rose, white edge; very beautiful.....	50	5 00
Decaisne. Large, convex flowers, very full, lively violet-red.....	50	5 00
Delachii. Large, cup-shaped flower, deep amaranth, late flowering; fine.....	35	3 50
Duc de Cazes. Large petals of lively carmine-red, center petals rose and salmon.....	35	3 50
Duchesse de Nemours (Calot). Very beautiful cup-shaped flower, sulphur-white with greenish reflex, pretty bud; extra fine.....	1 00	10 00
Duchesse d'Orleans. Beautiful carmine, rose center intermixed with salmon ligules.....	35	3 50
Edulis superba. Very large flower of perfect shape; beautiful brilliant tinted violet mixed with whitish ligules; silver reflex.....	60	6 00
Eugene Verdier. Large, cup-shaped flower, flesh-pink, shaded yellow and salmon, very fresh coloring; extra fine.....	2 00	
Felix Crousse. Large, anemone-shaped flower of perfect form; very brilliant red.....	75	8 00
Gloire de Chenoceaux. Large, full flowers in clusters, beautiful satiny rose, lightened with white; very late-flowering.....	60	6 00
Grandiflora Nivea. Very large, pure white flower, shaded with sulphur, lovely rose and salmon with some stains of carmine; a variety of perfect loveliness.....	2 50	
Grandiflora rosea. Very large, full convex flower, rose and salmon mixed; beautiful.....	40	4 00
Jean d'Arc. Large flower of soft rose, sulphur-white and lively rose, center stained carmine, lovely flesh coloring.....	1 00	10 00
La Coquette. Large flower of perfect shape, lively beautiful rose, center flesh-pink, salmon and carmine; one of the finest.....	1 00	10 00

	Each	Per doz.
La Tulipe. Very large globular flower, rosy white center, outside of the flower lively carmine, center striped deep carmine; extra fine.....	\$0 75	\$8 00
Louis Van Houtte. Large flower of lively violet-red; very brilliant; a very beautiful variety.....	60	6 00
M. Hippolyte Delille. Large flower, carmine-rose, tinted rose-lilac.....	35	3 50
M. Pasteur. Beautiful lively china pink, lightened with lilac reflex; extra.....	50	5 00
M. Pierre Dessert. Enormous imbricated full flower, very brilliant deep amaranth, velvety violet reflex.....	75	
Magnifica. Soft rose, center sulphur edged carmine; dwarf plant.....	60	6 00
Mathilde Mechin. Very pretty anemone flower, compact, ball shaped, perfect form, carnation-pink mixed with small salmon petals.....	1 00	
Meissonier. Very large, double flower with large petals of brilliant purple-amaranth; very beautiful.....	75	8 00
Mme. Aug. Petereau. Large, full flower, beautiful lively satiny pink, silvery reflex on the edge; late variety.....	40	4 00
Mme. Barillet-Deschamps. Large flower of perfect shape, very soft rose edged white, shaded with tints of lively pink, silvery reflex.....	1 00	
Mme. Bigot. Large, extra double flower, clear china-rose washed with white, shaded salmon-rose; a beautiful variety.....	50	5 00
Mme. Bucquet. Black velvety amaranth, very deep color; extra fine.....	75	8 00
Mme. Calot. Large, peony-shaped flower; very double, carnation-white tinted yellow.....	1 00	10 00
Mme. de Vatry. Very large flower of perfect shape, color clear carnation, sulphur-white center with carmine stripes; extra fine variety.....	1 50	
Mme. Ducel. Very large, globular flower, extra full and perfect shape, silvery salmon-pink.....	85	9 00
Mme. Emile Galle. Large, cup-shaped, imbricated flower, soft lilac, center yellowish white, fresh coloring; extra fine.....	1 50	
Ne Plus Ultra. Very large flower of good shape, fresh and lively pink.....	40	4 00
Noemie Demay. White convex flower, slightly marked with carnation and occasionally carmine; early flowering; dwarf plant.....	75	
Philomela. Soft satiny rose color, center composed of saffron-yellow ligules tufted, lively red; an elegant flower of remarkable freshness.....	1 25	12 00
Plenissima rosea superba. Very full convex flower, beautiful pink and salmon.....	35	3 50
Prince de Salm Dyck. Lovely lilac, chamois center, tufted lilac.....	50	5 00
Princess Galitzen. Soft carnation, very narrow center, petals of sulphur-yellow.....	1 00	
Reine des Francais. Collar carnation-pink, white center, shaded yellow.....	75	
Rose d'Amour. Large flower of very soft carnation-pink; very fresh color; fine.....	1 25	
Solfaterre. Collar of large pure white petals, those of the center very narrow and sulphur-yellow; one of the best.....	1 00	
Souvenir de L'Exposition Universelle. Very large, imbricated flower of perfect form, rich cerise; very brilliant flowers in clusters.....	75	8 00
Souvenir du Docteur Bretonneau. Large flowers in clusters, lively cerise-red, lightly shaded clear amaranth, golden stamens, brilliant coloring of grand effect.....	75	8 00
Triomphe de L'Exposition de Lille. Large, imbricated flower, soft carnation-pink, with white reflex carmine center; very fresh coloring.....	50	5 00
Triumphans Gandavensis. Very pretty rosy white flower, shaded with chamois; dwarf plant.....	1 00	
Victoire Modeste. Large flowers of violet-rose, center petals marked with large salmon lines.....	75	
Virgo Maria. Large flower of good shape, dull white.....	75	
Washington. Clear red, center soft salmon-pink; beautiful variety.....	50	5 00

KELWAY PEONIES

Kelway & Son are the most famous growers of Peonies in the world, and the following varieties are what they consider the very best of their new varieties. These Peonies are imported to order only, and orders must be received not later than October 1 for fall delivery or March 1 for spring delivery. Prices include duty and all charges.

	Each
Agnes Mary Kelway. Light rose guard petals, yellow petals, with a rose tuft. First-class Certificate, R. B. S.....	\$2 00
Alonzo. Deep crimson. First-class Certificate, R. H. S.....	2 00
Bunch of Perfume. A full double flower, of a vivid rich rose-color, exceedingly sweet-scented. First-class Certificate, 1900.....	4 00

KELWAY PEONIES, continued

	Each		Each
Cyclops. Purple-crimson. First-class Certificate, R. B. S.	\$1 50	Maria Kelway. Very fine; blush guard petals, yellow petaloids, blush tuft, sweet-scented. First-class Certificate, R. H. S.	\$2 00
Dr. Bonavia. Of a very lovely pink color, paling at the edge of the petals; large flowers, showing golden anthers amongst the petals; very sweet-scented.	3 00	Miss Brice. Rose guard petals, yellow and rose petaloids, rose tuft. First-class Certificate, R. H. S.	2 00
Duchess of Teck. An excellent variety, large and of good form, attractively colored, creamy white and bright pink. First-class Certificate, R. B. S. Award of Merit, R. H. S.	2 00	Miss Salway. White guard petals, sulphur center; very fine. First-class Certificate, R. H. S., and Certificate of Merit, R. B. S.	2 00
Duke of Cambridge. A very handsome bright crimson flower; a superb variety; the very best of its color.	2 00	Moonbeam. Large white, tufted in the center. Award of Merit, R. H. S.	2 00
Duke of Clarence. Cream, slightly flushed pink. First-class Certificate, R. B. S.	2 00	Mountebank. Pink guard petals, lemon-colored narrow petaloids in the center; sweet-scented. First-class Certificate, R. B. S.	2 00
Duke of Devonshire. "A large variety of deep rose-color, with large outer guard petals and dense center."— <i>Journal of Horticulture</i> . "Duke of Devonshire is a fine large double variety, with deep rose guard petals and a mass of small inner petals of the same color."— <i>Gardeners' Magazine</i> . Award of Merit, R. H. S.	3 00	Mr. Manning. Deep glowing crimson. Certificate of Merit, R. B. S.	2 00
Ella Christine Kelway. Beautiful soft lavender-flesh color, enclosed in a large guard petal; very large and full and of perfect form, very sweetly perfumed. "Ella Christine Kelway, a very handsome herbaceous kind with white blossoms faintly tinted with salmon-pink. The variety is remarkable for its fullness and the great solidity of the blooms."— <i>The Garden</i> . Award of Merit, R. H. S., June 14, 1898.	4 00	Mrs. Stubbs. Delicate flesh-colored guard petals, with a white center to a very beautiful flower; fragrant.	3 00
Cavalleria Rusticana. Very full, dark purple-crimson. First-class Certificate, R. B. S.	2 00	Paderewski. Bright pink; very sweet smelling. First-class Certificate, R. B. S.	2 00
Glory of Somerset. Soft pink, large, beautiful. First-class Certificate, R. H. S.	3 00	Prince George. Fine purple. First-class Certificate, R. B. S.	2 00
Joan Seaton. Double, bright cherry-rose, each petal edged with a lighter color; rose-shaped flower, showing anthers amongst the petals, nicely scented. Certificate of Merit, R. B. S., 1897.	3 00	Princess May. "A beautiful variety, large, of good form, and of a pleasing cream color."— <i>Gardeners' Magazine</i> . "Of charming beauty."— <i>The Garden</i> . Award of Merit, R. H. S.	2 00
Kelway's Queen. Flesh-pink; a most delicate and lovely sort, and very sweet. First-class Certificate, R. B. S.	2 00	Prince of Wales. Soft lilac-rose, very large flower. First-class Certificate, R. B. S.	2 00
Lady Alexandra Macduff. Lovely French white; one of the grandest Peonies existing, tall and robust, and very highly perfumed; scarce. First-class Certificate, R. B. S.	4 00	Sainfoin. Fragrant. "The most striking of all; the flowers very full, large and brilliant; self-rose."— <i>The Garden</i> . First-class Certificate, R. B. S. Award of Merit, R. H. S.	2 00
Lady Beresford. The petals are tipped with carmine; very sweet. "A large-flowered variety of a soft blush-pink shade, delicate and beautiful; a very fine habited strong plant."— <i>The Garden</i> . "Lady Beresford is a huge white flower, with a tinge of buff at the base of the broad soft segments; a magnificent bloom."— <i>Gardeners' Magazine</i> . Award of Merit, R. H. S.	3 00	Sir T. J. Lipton. Large flower with golden stamens appearing in the center of bright rosy crimson petals. "A huge double, bright rosy carmine flower of great merit."— <i>Gardening World</i> . Certificate of Merit, R. B. S., 1897.	3 00
Lady Carrington. Flesh, very fine, sweet-smelling. First-class Certificate, R. H. S.	2 00	Summer Day. Creamy white. Certificate of Merit, R. B. S.	3 00
Lady Curzon. White guard petals with a bunch of cream-colored petals in the center, a faint blush tint pervading the whole flower; large, very sweetly perfumed. Award of Merit, R. H. S., June 5, 1900.	4 00	Venus. Flesh-pink, with shades of salmon; most delicate; a beautiful colored plate of this variety has appeared in <i>The Garden</i>	3 00
Lady Gwendolin Cecili. A very delicate lavender-flesh; a beautiful flower; late-flowering. First-class certificate, R. B. S.	3 00		
Langport Queen. Of a beautiful rosy blush color, suffused with pink; very fine	2 00		
Leonard Kelway. Pink guard petals, enclosing a convex cushion of cream-colored petals finished off by a pink crest. First-class Certificate, 1900	4 00		
Limosel. Very bright, clear, light lilac-rose; very large flower, full double, with a broad guard petal and narrower petals in the center. Very sweet-scented. Certificate of Merit, R. B. S., 1897.	3 00		
Lottie Collins. Deep purple; early-flowering. Award of Merit, R. H. S.	2 00		

SINGLE VARIETIES

Amiable. Cherry-rose, large. First-class Certificate, R. B. S.	2 00
Argus. Bright rose. First-class Certificate, R. H. S., Manchester	1 30
Autumnus. Purple. First-class Certificate, R. H. S., Manchester; First-class Certificate, R. B. S.	1 30
Bridesmaid. Single; white	3 00
Dorothy. Delicate pink; very charming	2 00
Duchess of Sutherland. Large, flesh-pink; a lovely flower.	3 00
Fairy. Rosy white	2 00
Felix Holt. Pink	2 00
Hesperus. Bright pink. First-class Certificate, R. H. S., Manchester	1 30
Lady Lillian Ogle. Blush-white	2 00
Lady Wimborne. Fine pearly blush-pink	2 00
Queen of May. French white	2 00
Stanley. A gorgeous variety of the richest and deepest maroon-crimson, with pure gold-color stamens. First-class Certificate, R. B. S., and Award of Merit, R. H. S.	3 00
The Czar. Deep purple-crimson.	1 30
Tinted Venus. Bright pink. First-class Certificate, R. B. S.	2 00
Viscount Cross. Deep cherry-red. "A charming single variety, of a bright cherry hue."— <i>Gardening World</i> . First class Certificate, R. B. S.	2 00

Orders for above Peonies must be received not later than October 1 for fall delivery, or March 1 for spring delivery.

New Lilacs on Their Own Roots

Of late years there has been a multitude of new varieties of Lilacs grown, and some of them have very great beauty, but unfortunately almost all the stock offered, both in this country and Europe, has been budded on privet and is practically worthless, for Lilacs grown on this are certain to die in a few years. Nurserymen bud Lilacs on privet because they can produce a large stock quickly and inexpensively, but one Lilac on its own roots is worth a score of budded plants.

I have arranged with a leading English nursery to supply the varieties described, which are of the best, in good, strong plants on their own roots. For prices of Budded Lilacs, see my general list of Shrubs.

I secured all the available stock of the following Lilacs in Europe last summer and have only a limited supply to offer. They may not arrive in time for fall delivery and in that event they will be delivered in the spring.

Price, except where noted, \$1.50 each, \$15 per doz.

Alba grandiflora. Very large, pure white trusses of flowers.
Alphonse Lavalle. Double flowers; very large panicles, beautiful blue shaded violet.
Charles X. Large shining leaves and great trusses of reddish purple flowers. 50 cts.
Dr. Lindley. Large, compact panicles of purplish lilac flowers; dark red in bud; very fine.
Geant des Batailles. Bright reddish lilac, in large trusses.

Lemoine flore pleno. Double rose-colored flowers; fine.
Leon Simon. Double, compact panicles; flowers bluish crimson.
Souvenir de Louis Spath. Most distinct and beautiful variety; trusses immense, very compact florets, very large; deep purplish red.
Madam Lemoine. Superb; double white.
Marie Legraye. Large panicles of white flowers. The best white Lilac.
Michael Buchner. Dwarf plant; very double; color pale lilac; distinct and very fine.

EXTRA LARGE PLANTS OF COMMON LILACS. I have a limited supply of extra fine and large plants of the common purple and white Lilacs. 35 cents each, \$3.50 per doz., \$22 per 100.

JAPANESE IRIS

Four years ago a set of Japanese Iris (*I. Kaempferi*) were sent to me from Japan to test, which were said to be identical with the collection in the Royal Gardens. I cannot vouch for this statement, as I have never been in Japan, but I have never seen another collection in America or Europe that would equal it in any way. The collection contained many colors and varieties I had never seen before, and the flowers were of remarkable size and beauty. When these Irises were in bloom they excited the greatest admiration and enthusiasm, and it was hard to convince people that these unique and exquisitely beautiful flowers were as hardy as apple trees, and as easily grown as potatoes. They will thrive in any good garden soil, but if the soil is made very rich and deep, and flooded with water for a month before and during their blooming season, they will produce flowers of a wonderful size, sometimes 10 to 12 inches across. These Irises should be planted in full exposure to the sun.

As the Japanese names are unintelligible and impossible to remember, I have re-named this collection.

Since the above collection was received I have annually added to it the newest varieties from Japan and new varieties selected from thousands of seedlings grown on my own grounds, until I now have what is unquestionably the finest and most complete collection of Japanese Iris in the world.

PRICES OF JAPANESE IRIS

Named varieties, described below, 35c. each, \$3.50 per doz., \$6.50 for 25, \$20 per 100, except where noted.

American-grown, in 25 named varieties. This collection does not contain any of the varieties described below. \$1.75 per doz., \$10 per 100.

American-grown, fine mixed. \$1.25 per doz, \$6 per 100, \$50 per 1,000.

SPECIAL OFFER. Of a few of the varieties described below I have very large stocks, and will supply them, when selection of varieties is left to me, at \$12 per 100, \$100 per 1,000. They are all strong growers and free bloomers, and extremely desirable when it is desired to plant Japanese Iris in large masses.



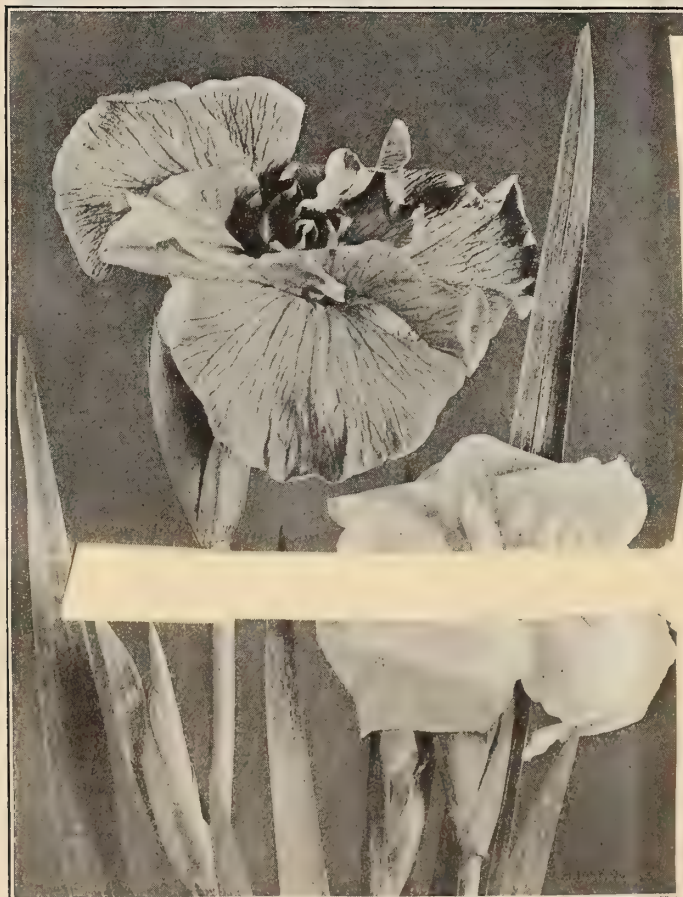
Group of Japanese Iris

- Fairy Queen.** Single. White, base of petals yellow, maroon center.
- Frank Moore.** Double. Dark blue; rich and velvety; extra fine.
- Gigantea.** Double. Bluish purple, lightly striped white; vigorous grower and free bloomer. The earliest flowering variety in the collection. \$10 per 100.
- Glory of Japan.** Double. Deep blue, shading to reddish plum at margin, center purple. 60 cts.
- Glow.** Double. Velvety maroon; large. \$1.
- Harlequin.** Double. Pale blue, base of petals yellow, center of petals white; late.
- Heart of Gold.** Double. Extra large, white flowers, with yellow center.
- Hermione.** Single. White, maroon center, petals penciled with blue. 50 cts.
- Hon. F. H. Collier.** Double. Light blue, penciled with dark blue; margins of petals reddish plum; late and fine.

JAPANESE IRIS, continued

- Ida.** Reddish plum, rich and velvety; narrow-yellow band on base of petals.
- James R. Mellon.** Double. Extra large flower; lilac, striped with purplish blue, purple center; distinct and fine. 60 cts.
- James F. Parker.** Double. Rich dark blue, yellow center; large and fine. 60 cts.
- James George.** Double. Magenta, striped and blotched; large and distinct. \$1.
- John Marron.** Double. White, distinctly penciled with blue; blue center, base of petals yellow; late.
- John C. Slack.** Double. Lilac, heavily blotched with magenta and blue; yellow center; distinct. \$1.
- King of the Purples.** Single. Dark rich purple; extra large and fine; very striking.
- Kirk.** Very double. Crimson-maroon, rich and velvety, petals striped lightly with white. A splendid variety named for an enthusiastic admirer of horticulture. 60 cts.
- Kitty.** Single. White flower, slightly suffused with pale blue. 75 cts.
- Lady of Shallot.** Double. Rose, edged blue; fine. \$1.
- Laura.** Double. White, penciled dark blue; purple center; late.
- Lorna Dorne.** Double. White, delicately penciled with blue; yellow band at base of petal; blue center.
- Marmion.** Double. Deep velvety maroon, mottled with light maroon. 75 cts.
- Mary Anderson.** Double. Light blue, blotched with dark blue; yellow spot at base.
- Mary Ellet.** Single. Very large; center pure white, petals broadly margined and striped with white; good. 60 cts.
- Merry Hampton.** Single. Reddish plum; base of petals yellow, with broad band of white. 60 cts.
- Mikado.** Rich glowing royal purple.

- Minerva.** Double. Bright blue, striped and blotched white. 60c.
- Mont Blanc.** Double. Pure white; large and fine.
- Moonlight.** Double. White flower, with yellow center.
- Modesty.** Single. White, maroon center slightly suffused with maroon.
- Mrs. Frank H. Hiscock.** Single. White, margined with pale lilac; delicate and fine. 50 cts.
- Mrs. James H. Ballantine.** Single. Extra large white flower, delicately suffused with pale blue; margin of petals pure white; fine.
- Mrs. Alexander King.** Double. Lavender, edged reddish purple; yellow spot at base of petal; extra fine.
- Mrs. William T. Blodgett.** Double. Large white flower; base of petals yellow.
- Mrs. Howard Eckert.** Single. Lilac flower, striped with magenta. 50 cts.
- Mrs. Henry L. Higginson.** Double. White, penciled lilac; narrow yellow band; center lilac; delicate and distinct. 60 cts.
- Mrs. Henry S. Turner.** Double. Reddish purple; center of petals bright blue, with large yellow band; extra strong grower; distinct and showy. 60 cts.
- Mrs. D. E. Richardson.** Double. Rose, shading to white at margin; center white; very distinct. One of the best of the new sorts. 50 cts.
- Mrs. R. H. Boggs.** Single. Pale blue, blotched white; large, distinct and fine. \$1.
- Mrs. J. Walter Thompson.** Double. Nine to ten petals; rich reddish plum, striped white; large and fine. \$1.
- Nancy.** Very Double. Magenta; center of petals white; old flowers pendulous. 60 cts.
- Octavia.** Single. White, dark center; petals distinctly netted with blue.
- Paragon.** Single. Large white flower, freely striped and suffused with maroon.
- Pierre Lorillard, Jr.** Double. Rich purplish plum; base of petals yellow; large and fine. 75 cts.
- President Roosevelt.** Double. Rich dark velvety



Types of Japanese Iris



Group of Rhododendrons, on Grounds of H. H. Hunnewell, Esq., Wellesley, Mass.

IMPORT PRICES FOR RHODODENDRONS AND HARDY AZALEAS

ORDERS MUST BE RECEIVED NOT LATER THAN MARCH 1, 1903

I publish an Illustrated Descriptive Pamphlet of Rhododendrons and Hardy Azaleas, which gives full cultural directions. Sent free to applicants

Although I give prices according to height, such classification is delusive, for a well-grown plant 18 inches high is worth more than a poorly grown plant twice as high. I guarantee the stock offered below to be satisfactory in every respect. The sizes of Rhododendrons are given in inches, but the plants will be larger and smaller than the sizes quoted, according to the habit of growth of the variety.

I notice that one of my competitors pretends to meet my prices on Rhododendrons by describing them in three or four different qualities, and offering his poorest quality at about my prices, and his best quality at an advance of 100 per cent. I have only one quality to offer, and that is the best in the world, and incomparably better than can be obtained from any other American dealer, whether grower or importer. I am perhaps the largest importer of Rhododendrons in this country, and can easily satisfy intending buyers that my stock is the best and my prices are the lowest. Scores of the leading parks and amateurs have been supplied with this stock, and their names will be furnished on application.

RHODODENDRONS

Best Named Varieties (entirely hardy) —

About 18 inches high; good bushy plants, well set with bloom buds.

This is the size usually sold at \$1.50 each. \$14.50 per doz., \$97 per 100.

2 to 2½ feet; good bushy plants, well set with bloom buds. \$18 per doz., \$120 per 100.

Selected plants, 3 feet high; well set with bloom buds. \$25 per doz., \$165 per 100.

Extra selected plants, 3 feet high; well set with bloom buds. \$32 per doz., \$225 per 100.

Extra selected specimens, 3 to 6 feet high; well set with bloom buds. \$4 to \$25 each. (These specimen plants cannot be bought elsewhere in this country for three times the price.)

Standards, 4 to 6 feet high; well set with bloom buds. Each, according to size and form, \$5, \$7.50, \$10, \$15, \$18 and \$25.

Seedling Hybrids. Grown expressly for the American trade. Perfectly hardy and very beautiful colors; about 18 inches high; nice bushy plants, and well set with bloom buds. \$10.60 per doz., \$72 per 100.

Same as above, but finer plants; 1½ to 2 feet high. \$13 per doz., \$85 per 100.

Same as above, extra strong plants; 2 feet high and upwards. \$16.50 per doz., \$110 per 100.

Extra selected specimens, 3 to 6 feet high; well set with bloom buds. \$3 to \$20 each.

DWARF RHODODENDRONS

These plants are of dwarf, bushy habit, and form suitable edgings for Rhododendron beds. They are also adapted for rockwork or grouping by themselves. A bed of either *R. Wilsonianum*, *myrtifolium* or *ovatum* makes a very satisfactory appearance in winter or summer.

\$9 per dozen

Chelranthifolium,
Cillatum,
Ferrugineum,

Hirsutum,
Hybridum,
Myrtifolium,

Ovatum,
Wilsonianum.

HARDY AZALEAS

Ghent. Good plants of the finest known kinds; well budded; equal to those sold here at \$1.50 each. \$13 per doz., \$85 per 100.

Same as above, but larger. \$16.50 per doz., \$110 per 100.

Same as above, but extra fine and large plants; 2 feet high. \$25 per doz., \$165 per 100.

Mollis. Good plants of the finest named varieties; well set with bloom buds. \$9.60 per doz., \$64 per 100.

Same as above, but larger plants. \$13 per doz., \$85 per 100.

Same as above, but larger specimens; such as retail here at \$3 each. \$16.50 each, \$110 per 100.

New Hybrids. Lovely new hybrid varieties of Ghent and Mollis, offered only by Mr. Waterer; nice bushy plants. \$13 per doz., \$85 per 100.

Same as above, but larger plants. \$16.50 per doz., \$110 per 100.

NEW HYBRID AZALEAS

Mollis × **Occidentalis** (Albicans). Flowers white, with lemon blotch; very beautiful and sweet-scented. \$1.50 each.

Mollis × **Sinensis**. Flowers very large and very showy, the colors principally bronze-orange. \$12 to \$20 per doz.

Occidentalis. A distinct, late-blooming, sweet-scented species, the color of the leaves in autumn being wonderfully rich and varied. \$12 per doz.

AZALEA RUSTICA FLORE-PLENO

New double Azaleas, in 12 varieties; good blooming plants. \$20 per doz.

EVERGREEN SHRUBS

KALMIA latifolia. Nice plants, well set with bloom buds. \$9.60 per doz., \$64 per 100; larger plants, \$1 to \$5 each.

ANDROMEDA floribunda. Nice plants. \$9.60 per doz., \$64 per 100.
" Japonica. The finest of all Andromedas; nice plants. \$16.50 per doz., \$110 per 100.

The foregoing are import prices for orders received **not later than March 1, 1903**, and cancel all previous quotations. These prices include all charges for packing, custom-house charges and freight to New York City. Freight from New York to point of destination must be paid by purchaser. All orders will be packed in separate cases in England and will be shipped direct to customers from New York by my agent there. Safe arrival in good condition and satisfaction guaranteed. Stock will be delivered in April at the proper time for planting. If preferred, I will import large orders for a commission of 25 per cent on actual cost. This will make the stock cost 5 to 10 per cent less than the prices quoted above. No orders for less than 12 plants will be filled, but the 12 may be assorted from anything offered in above list. The above prices include the 30 per cent duty placed upon imported nursery stock.

New Upright Honeysuckles

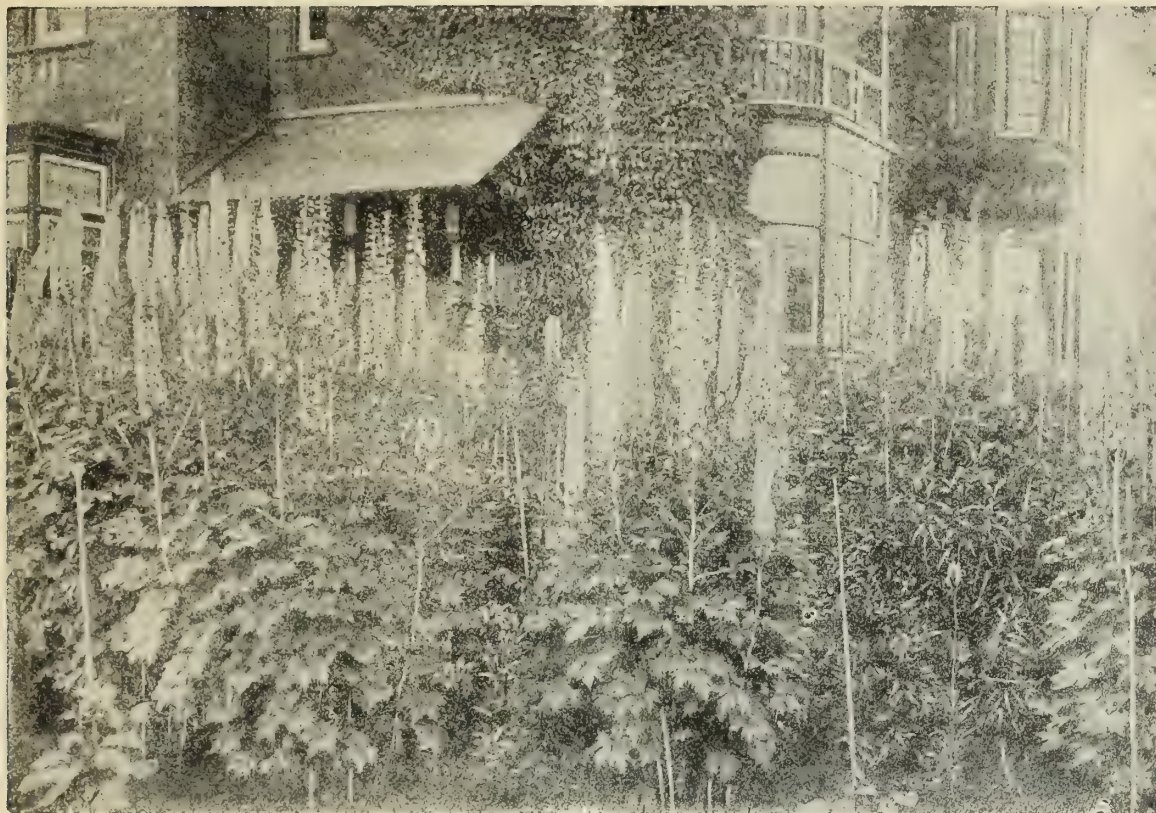
I have never seen anything more striking than the display of the New Upright Honeysuckles in the Arnold Arboretum in Boston. These splendid shrubs are made a special feature in this famous botanical garden, and nothing is more worthy of a prominent position. They delight thousands in the spring, when they are covered with their charming, sweet-scented flowers; but their great glory is at mid-summer, when they are loaded with the most brilliant and beautiful berries borne by any shrub. When they become known I predict a popularity for these shrubs beyond that of the popular Hardy Hydrangea, which is now sold by the hundreds of thousands. They have every good quality—perfect hardiness, vigorous growth, beautiful rich green foliage that is as persistent as that of the California privet, and this season was bright and green until almost Christmas, and two distinct seasons of unsurpassed beauty. These must not be confused with the climbing Honeysuckles so extensively used for covering porches. They are vigorous, upright-growing shrubs, suitable for large groups, specimens, screens or untrimmed hedges. I have been offering these shrubs for two or three years, but could only obtain a few plants at a high price. I now control a stock of a few thousand plants, which, while they last, I will furnish at the following low prices:

	Each	Per doz.	1000
Lonicera, Bella candida	\$0 30	\$3 00	\$20 00
" " rosea	30	3 00	20 00
" " albida	30	3 00	20 00

A few large plants at 50 cents each, \$5 per dozen



Upright Honeysuckles in bloom



Tall English Delphiniums (From Photograph)

TALL ENGLISH DELPHINIUMS

I am tempted to say that the Improved English Delphiniums are the most beautiful hardy plants in cultivation, but I am also tempted to say this of a score of other things, and, of course, it is impossible to say which is the most beautiful of hardy plants, for they have such an immense variety of beauty that the wonder grows that people continue to plant bedding plants by the million which have little or no beauty, are an annual expense, and cost quite as much as hardy plants whose first cost is their only cost and which increase in size, in beauty, and often in quantity year after year. These Delphiniums may not be the most beautiful hardy plants, but they are among the most beautiful, and nothing can be more distinct and satisfactory. They are stately and picturesque, some varieties growing eight feet high in rich soil; they have immense spikes of most beautiful flowers of every imaginable shade of blue, and their season is a long one; in fact, they will bloom from spring till fall if properly treated.

Hitherto it has been impossible to get satisfactory varieties and plants of English Delphiniums; in fact, no nursery in this country has had a satisfactory general stock of hardy plants, and I have had the greatest difficulty in getting the plants specified for my landscape gardening work, as this class of plants is extremely difficult to import. The difficulty became so great and my work was so hampered by the lack of plants to carry it out that I persuaded one of the most capable horticulturists in this country to start a hardy-plant nursery and guaranteed the financial results. It is the intention to make this nursery a model of its kind and grow everything in hardy plants worthy of culture and to send out nothing but well-grown plants packed in the most careful manner. The Delphiniums described on next page are one of the offerings of this nursery (The Springdale Nursery).

CULTURE OF DELPHINIUMS.—The culture of Delphiniums is exceedingly simple, and the results out of all proportion to the slight amount of care necessary. They thrive in almost any position, and may be planted at any time of the year, provided that in summer the plants are not too forward, and that they be well watered if the weather be dry. The soil may be a rich, friable loam, which suits them finely; but any soil, even hot and sandy, if well watered and manured, will give excellent results. Dig deeply—trenching is better—add plenty of well-rotted manure, and plant about 2½ feet apart. Placed in lines, as a background to a border, or in groups of, say, three plants at intervals, the effect of the Delphinium is exceedingly fine. They look well in beds also, arranged at the same distance apart each way. They are grand grown in masses of large groups of separate colors, and may be associated with shrubs with great advantage, succeeding by their robustness well in shrubberies. A succession of flowers may be expected from spring to early autumn, especially if the spikes which have done flowering early be cut down to the ground; fresh growth will then be produced, which will give blossom. Copious watering in summer will be attended by increased size of spike and flower; in fact, in seasons of prolonged drought water is absolutely a necessity on many soils if the varieties are to exhibit themselves in their true size and beauty of flower and spike. Top-dressing is greatly recommended on certain soils, instead of the bare surface of the ground being left exposed to the sun. Some of the neater dwarf alpine and other hardy plants may be utilized to plant between and around Delphiniums. Coal ashes strewn over the crowns will protect the plants from slugs through winter and spring. As we have intimated, any garden soil suits the Delphiniums; it is, however, necessary to secure sorts such as are offered below, in order to obtain an effect superior to that afforded by the old smaller-flowered varieties. No amount of liberal treatment will cause the smaller-flowered kinds of a few years back to develop into the gorgeous hybrids of today.

"The Delphiniums were the first thing that attracted my attention, for they were just at their best and there was just about one acre of them. They made such a sight as I shall not soon forget, so vast was the quantity in bloom, so grand the spikes, and so rich and varied the different shades of blue. Although I have been a grower of these lovely hardy border plants for some twenty years, I was not prepared to see so much improvement in color, and was much struck with the intensity of the shade in many varieties as compared with the old *Bella Donna*. The varieties which have a shade of bronze in the center are also very fine, the contrast between the bronze center and the deep blue exterior being very striking. But the shades of color in many of the newer sorts almost baffle description, and I shall not attempt it. It is in the doubles and semi-doubles that the greatest advancement has been made, and many of them are truly lovely. They are much larger and more compact than the old doubles of the *Ranunculoides* type, and consequently are much more valuable for ordinary garden adornment. The



Specimen Plant of Improved English Delphiniums

DELPHINIUMS, continued

light blue flowers with the large white eyes are very striking, and of this section Britannia is, I think, the very best Delphinium I ever saw. . . . The Delphiniums do not receive any special treatment here, being simply planted on a strong loamy soil in an open position. Some few were tied to stakes, but the majority do not require it, being so dwarf in comparison with the old sorts. This dwarfness of habit is a great gain, and the greater portion of the plants were not more than 4 to 5 feet high, yet carrying immense spikes of large bloom."—*The Gardening World*.

SPECIAL OFFER OF IMPROVED ENGLISH DELPHINIUMS

I want everyone who receives this price-list to try these improved English Delphiniums, and to that end offer them at extremely low prices. I guarantee that they will give unqualified satisfaction in every instance and will be a revelation of beauty to most people.

	Per doz.	Per 100
Fine Mixed English , grown from seed of Kelway's famous named sorts.....	\$1 50	\$10 00
English , in separate colors, grown from Kelway's newest named sorts.....	2 00	13 00
Selected Varieties , selected from thousands of seedlings grown from Kelway's choicest named sorts.....	3 00	20 00
Extra Selected Varieties50 cts. each..	5 00
White Varieties . Not recommended.....	each, \$1.50..	

Delphinium formosum

In the perennial Delphiniums or Larkspurs we have one of the most beautiful and useful families in hardy plants. The old *Delphinium formosum* is one of the few hardy plants which has been pretty generally offered by the plant trade; yet it is comparatively unknown, although few things can be planted that will give more satisfaction, whether the object is decorative effect in the garden or flowers for cutting for the house. Messrs. J. H. Small & Sons, the leading florists of New York and Washington, have made quite a hit with it as a novelty in cut-flowers. The flowers are intense deep blue, perhaps the most brilliant blue to be found in flowers freely produced in long spikes; blooms in June and July and continues for a long time in bloom, and if the plants are cut back after flowering will bloom a second time in the fall. The plants grow to 4 or 5 feet in height, and if planted in masses about two feet apart will produce a splendid effect. 15 cts. each, \$1.25 per doz., \$8 per 100.

Delphinium formosum cœlestinum

This rare and scarce Delphinium has all the good qualities of the well-known Formosum, but instead of dark blue flowers produces great spikes of exquisite light blue bloom, the loveliest shade of blue in the floral world. I have always treasured this Delphinium in my garden, but could never get enough stock of it to offer. This season I have secured three thousand plants, which I can offer at a reasonable price. 20 cts. each, \$2 per dozen, \$12 per 100.

HARDY PERENNIAL PHLOXES

The beauty and usefulness of these grand border plants give to them a deservedly first place among hardy plants. For cutting, their large trusses go a long way in floral decorations. In color they range from pure white to the richest crimson and purple, and from soft rose and salmon to bright coral-red, all having a delicate fragrance. **Perennial Phloxes** succeed in almost any soil enriched with manure, but are much benefited by a mulching of decomposed manure in spring, and in hot weather an occasional soaking of water. If the first spike of bloom are removed as soon as over and the plant given a good soaking of water, they will produce a second supply of flowers, thus continuing the display until late in autumn. These later blooms are often finer than the first.

The following varieties are a selection made by me in France, Germany, Holland and England during the last summer, and include all of the very best of the new and old varieties.

Field-grown plants ready for fall delivery, except where noted, 15 cts. each, \$1.50 per doz., \$10 per 100

- Aurore.** Brilliant orange-crimson, bright crimson eye; a very showy variety.
- Adonis.** China-rose, large carmine eye.
- Argon.** Light purple, shaded white; very distinct.
- Athis.** Tall, salmon; the tallest growing of all Phloxes.
- Bacchante.** Crimson, with carmine eye; dwarf and very bushy; full-flowering.
- Beranger.** Rosy white, suffused gray; very delicate shade.
- Berenice.** Pure white; dwarf and bushy; a lovely sort.
- Boule de Feu.** Bright rosy red; dark center.
- Captain Wilhelmy.** Dark crimson.
- Charlotte Saison.** White, richly shaded with purple-rose; extra tall.
- Coquelicot.** Orange-scarlet, center purple; magnificent color for bedding. The most brilliant Phlox yet produced.
- Comet.** Rich dark crimson; the richest colored of all Phloxes.
- Eclairer.** Bright purplish rose, light center; enormous flowers.
- Embracement.** Salmon-scarlet; extra fine.
- Esperance.** Pale mauve, fine white eye; extra fine.
- Eugene Danzanvillers.** Light lilac, large white eye; immense trusses.



Phlox, Miss Lingard (See opposite page)

HARDY PERENNIAL PHLOXES, continued

- Ferdinand Cortez.** Bronzy copper; distinct and fine.
- Flancee.** The best white; enormous pyramidal spike. 25c.
- Frau Ilona Von Barczay-Waldeck.** Pure snow-white; very large. 25 cts.
- Frau S. Buchner.** Salmon-pink; large and fine.
- Gartendirector A. Medin.** Bright lilac-carmine, flamed with white; white eye.
- Georges Bruant.** Carmine, with large white eye.
- General Breart.** Blush white, with large crimson eye; 2½ feet high.
- Cloire d'Orleans.** White, rosy purple center, variegated foliage.
- Henri Murger.** Purest white, with deep rose center large, handsome truss; 1¼ feet high. 25 cts.
- H. O. Niger.** Pure white; large crimson eye.
- Kossuth.** Deep rose.
- Liberte.** Lovely soft cerise-salmon; large, branching spikes; extra fine. 25 cts.
- La Neige.** Pure white.
- La Candeur.** Pure white.
- Lothair.** Crimson.
- Le Mahdi.** Steel blue, very intense color. An award of merit for this variety, August, 1899.
- Le Siecle.** Rose, white eye; distinct.
- Le Soleil.** Lovely soft rose-pink, with white center; a charming color; extra fine; 2 feet high. 25 cts.
- Marquies de Breteuil.** Bright pink, light center; very fine; 1½ feet high. 25 cts.
- Miss Lingard.** The best Phlox in cultivation. It produces immense heads of beautiful white flowers in June, and blooms again in September and October. Splendid foliage and habits and free from attacks of red spider. (See illustration, preceding page.)
- Miss Cook.** White, pink eye; early.
- Madame Pope Carpenter.** White.
- N. Smith.** Dark crimson.
- Obergartner Wetteg.** Light rose; center lighter, with red eye.
- Orientale.** Rosy mauve; white center; fine trusses of large flowers.
- Pearl.** Pure white; very late.
- Pantheon.** Salmon-rose; a splendid variety.
- Richard Wallace.** White; pink eye.
- Schlossgartner Reichenauer.** Pure white.
- Splendens.** Brilliant glowing crimson; flowers small, but color rich; 2½ feet high.
- Undulata variegata.** Variegated foliage.



Perennial Phloxes

Phlox Carolina

A story goes with the procuring stock of this rather rare and beautiful native Phlox. I was on my way to my office one April morning, when I saw on a neighbor's lawn great masses of the lovely blue bloom of this Phlox, of which I had long wished to secure some plants. I walked into the grounds intending to ask for some, and was met by a very pompous-looking gardener, whose manner irritated me so that instead of asking for the plants I asked the name of them. "That," said the gardener, "is the 'Miller B. Florer,' or 'Star of Oregon,' a rare native plant, that can only be obtained in one small district in Oregon." "That's the name, is it?" I replied. "Now, do you know what you are? You are an unmitigated old humbug and a disgrace to a very respectable profession." With this I went to my office and wrote to my neighbor for some plants, which were promptly sent. This Phlox is a lovely dwarf plant, covered with bright blue flowers for about a month, in April and May. Price, 20 cts. each, \$2 per doz., \$12 per 100.

Phlox Divaricata Canadensis

One of our native varieties that is but rarely met with, and which has been introduced in Europe the past few years as a novelty. A plant that is certain to meet with much favor when better known, as nothing can produce such a cheerful corner in the garden in very early spring. Frequently beginning to bloom early in April, it continues until about the middle of June, with large bright lilac-colored flowers, which are produced on stems about 10 inches high, in large showy heads, and are very fragrant. Extremely fine for naturalizing in the woods and shady places. 10 cts. each, \$1 per doz., \$6 per 100.



Bed of Perennial Phlox



Walled Garden of Hardy Plants (From English "Country Life")

Some Notable Hardy Plants

Elsewhere will be found a very complete list of hardy plants, but the following varieties are especially desirable, and I am in position to furnish them in quantity at very low prices.

AQUILEGIAS

All of the single long-spurred Aquilegias, or Columbines, are extremely beautiful, and a collection of them should be a feature in every garden. Foremost among these choice plants is our native Aquilegias. If these and other choice hardy plants were as well known as bedding plants, the day of geraniums, coleus and other commonplace plants would soon be over. The flowers of these Aquilegias are most lovely and delicate, ranging from white to crimson, including shades of blue and yellow. Assorted varieties, 15 cts. each, \$1.25 per doz., \$9 per 100. For complete list of varieties see general list of hardy plants.

BLACKBERRY LILY (*Pardanthus Sinensis*)

Lily-like flowers of a bright orange color, spotted with red, which are succeeded by seeds that resemble blackberries. Very showy and desirable. 15 cts. each, \$1.50 per doz.

CHRYSANTHEMUM LATIFOLIUM

I have at last succeeded in getting a stock of the true variety of this most beautiful of all the single Daisies. It is one of the most satisfactory hardy plants for the garden or border, and produces its large, beautiful single white flowers in the greatest profusion. It should be included in every collection of hardy plants. 15 cts. each, \$1.50 per doz., \$10 per 100.



Chrysanthemum latifolium

CLEMATIS

RECTA. This charming plant is almost unknown in this country, although a great favorite in England for a great many years. This Clematis has flowers almost identical with the popular *Clematis paniculata*, but instead of being a climber it is a dwarf herbaceous plant, growing about 18 to 24 inches high, and blooms in June instead of September. I have known and admired the plant for several years, but until recently have never been able to secure sufficient stock of it to offer for sale. Price, 20 cts. each, \$2 per dozen.

PANICULATA (Japanese Virgin's Bower). This handsome hardy climber is one of the choicest and most satisfactory climbing flowering plants we know. The plant is of strong, rapid growth, with small, dense, cheerful green foliage, giving it a grace and elegance possessed by no other hardy climber, and, even did it not flower at all, it would be one of our most desirable vines. The flowers appear in the greatest profusion during August, and continue until late in the fall, are of a white color and most deliciously fragrant. The plant succeeds in almost any position; not only is it well adapted to run up all kinds of supports, but is just as useful for planting among rock-work, sloping banks, or, in fact, any position where a graceful vine is desired. Strong two-year-old plants, 25 cts. each, \$2.50 per doz.

SHASTA DAISY

This new Californian Daisy has been introduced with a great hurrah and may be all that is claimed for it, but so far in my garden does not appear to be as good as *Chrysanthemum latifolium*, which it resembles. However, it is not fair to judge plants the first season and my plants are small and came from California by mail. 50c. each.

DIANTHUS BARBATUS (Sweet William)

That old-fashioned favorite, the Sweet William, has almost disappeared from our gardens, more's the pity, for its place has been taken by plants of far less beauty. I am glad to note the rapidly waning popularity of the commonplace and vulgar bedding plants, and when they are entirely discarded, as they surely will be, and hardy plants take their place, our gardens will again have the charm of loveliness and the individual picturesqueness of former days. The Sweet William is a fine old plant which produces great masses of bloom of extremely rich and varied colors. The flowers are very lasting and fine for cutting. The plants offered are grown from the finest strain to be obtained in England, where hardy plants are universally grown and where new and improved varieties are constantly being produced. Fine large plants, 15 cts. each, \$1.25 per doz., \$8 per 100.

EPIMEDIUM (Earren-Wort)

A genus of dwarf-growing plants with leathery foliage and panicles of lovely white, yellow and lilac-colored flowers. The foliage of all the varieties offered below assume the most beautiful tints of color in autumn.

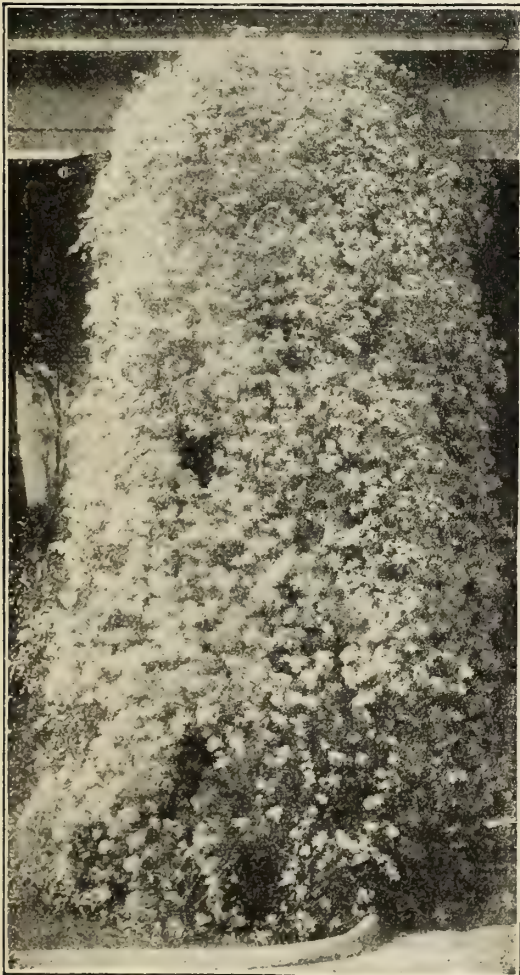
Lilacea. Beautiful lilac.

Niveum. Pure white.

Muschianum. Creamy white.

Sulphureum. Light yellow.

Any of the above four varieties, 25 cts. each, \$2.50 per doz.



Clematis paniculata (See preceding page)



Foxglove (From the "English Flower Garden")

FESTUCA GLAUCA

A dwarf grass with very distinct foliage. Does not grow over 8 or 10 inches high, and is very effective. 25 cts. each, \$2.50 per doz.

FOXGLOVE (*Digitalis*)

In England the Foxglove grows wild, but, notwithstanding this, it is a great garden favorite, as it well deserves to be. For stately and picturesque beauty it is not to be surpassed, and planted in masses in the garden among shrubs or naturalized on the edge of woods, in the orchard or along brooks, it is extremely effective and satisfactory. Strictly speaking, it is a biennial, but as it renews itself from self-sown seed, it may be treated as a perennial. Mr. Falconer has naturalized thousands of Foxgloves in Schenley Park, and nothing he has planted attracts more attention and admiration. Planted in the fall, Foxgloves will bloom well the following season. I offer a fine lot of strong plants grown from the best strains obtainable in Europe. 15 cts. each, \$1.25 per doz., \$8 per 100.

GALEGA COMPACTA, "SNOWBALL"

Covered in summer with racemes of small, white, pea-shaped blossoms, greatly valued for cutting. This novelty is far in advance of the old *G. officinalis* type, and should have a place in all hardy borders and where cut-flowers are in demand. 30 cts. each, \$3 per doz.

IMPROVED GAILLARDIAS

I consider the Gaillardias one of the most beautiful and desirable hardy plants in cultivation, and have had a large stock of Kelway's famous strain grown for my customers. I offer these plants for less than they have ever been sold, either in this country or Europe. Though such an ornamental addition to the herbaceous border, the perennial Gaillardia is content with extremely simple treatment. Dig the soil deeply and enrich with well-rotted manure. We recommend the Gaillardia for bedding purposes as well as for borders. Give a moderate amount of room and peg down, and a grand effect is to be obtained. Everyone will have noticed how grandly Gaillardias have thriven through the recent drought; they seem hardly to need water, but we recommend watering liberally to insure the finest flowers. The Gaillardia which Kelway & Son have been so successful in improving and popularizing is, of course, simply invaluable as a cut-flower, on account of its being so lasting when gathered and so brilliant and beautiful. The gay blossoms are obtainable in perpetual profusion from June to November, and the greater the drought and scarcity of other flowers the more the utility of the perennial Gaillardia is demonstrated. No more brilliant and beautiful sight can be imagined than a large bed of Gaillardias with their profusion of highly colored flowers of all shades. Some of the flowers of this improved strain measure fully 5 inches in diameter. Mr. Robinson in the *English Flower Garden*, recommends that they should be planted in bold groups, and remarks that no plants have finer effect in a bed by themselves, and we quite agree with him. Extra strong fine plants,



Improved Gaillardias

in a splendid assortment of colors which will be sure to give complete satisfaction. 15 cts. each, \$1.25 per doz., \$7 per 100.

HELIOPSIS PITCHERIANUS

A desirable hardy herbaceous plant, growing from 2 to 3 feet high, and a perpetual bloomer, beginning to flower early in the season, and continuing in bloom the entire summer. The flowers are of a beautiful deep golden yellow color, about two inches in diameter, of very thick texture, and are very graceful for cutting. 15c. each, \$1.25 per doz., \$8 per 100.

HOLLYHOCKS

Have you ever noticed that painters choose single Hollyhocks as subjects for floral painting oftener than any other flower? I suppose the reason for this is that artists have a keener appreciation of beauty than other people and recognize that the common, and I fear sometimes despised, single Hollyhock, is one of the most stately, picturesque and beautiful plants in the world. Nothing can be more effective than a large group or mass of single Hollyhocks, and once planted they will literally take care of themselves, even if planted in the grass. I know of patches that have not been cultivated or disturbed in any way for twenty years. Notwithstanding their great beauty and usefulness, single Hollyhocks are not offered for sale by any nurseryman in America, and the seed is not to be had from any seedsman. I am determined to have single Hollyhocks for my landscape gardening work, so I collected seed from old-fashioned (they will soon be new-fashioned) gardens and had thousands of plants grown for my customers. Some people think double Hollyhocks are more beautiful than single. They are mistaken, although the doubles are beautiful, but inclined to be top heavy, often need staking and liable to disease. Hollyhocks planted in the fall will bloom well the following summer.

SPECIAL OFFER OF HOLLYHOCKS

	Per doz.	Per 100
Best Large-Flowered, Single. All colors mixed	\$1 25	\$8 00
Best Large-Flowered, Single. In separate colors..	1 50	9 00
Chater's Famous Strain. Best double grown. In separate colors: White, sulphur-yellow, scarlet, rose, Isabel color, salmon-rose, crimson-yellow, golden yellow, dark crimson, cherry-red and peach.	1 50	10 00
New Allegheny. Immense semi-double flowers, with fringed edges; very beautiful	20 cts. each	2 00
New Single Japanese. Dark red, white edge. Said to be very fine	20 cts. each	2 00
Ficifolia. The Fig-Leaved Hollyhock. Bright yellow flowers	each, 35 cts.	3 50
Primrose Queen. A splendid addition, large, bright single primrose; yellow flowers	each, 35 cts.	3 50



Single Hollyhocks



Group of Hardy Plants at Columbian Exposition

Chrysanthemum latifolium, Liatris Pycnostachya and Helianthus grandiflorus mollis

HELIANTHUS

LÆTIFLORUS. The best of the summer-blooming variety of hardy Sunflowers; flowers 3 inches in diameter and freely produced. Plant grows 3 to 4 feet high and spreads rapidly. Fine for cutting, for the border, and for planting among shrubs. 15 cts. each, \$1.25 per doz., \$7 per 100.

GRANDIFLORUS MOLLIS. One of the best of the hardy Sunflowers with large fine flowers and very effective foliage. Like all the hardy Sunflowers it is fine for cutting and of the easiest culture. 15 cts. each, \$1.50 per doz., \$8 per 100.

HIBISCUS MOSCHEUTOS

I wish to call attention to this extremely showy and satisfactory plant. It thrives in any garden soil and is equally desirable as a garden plant or naturalized along the edges of brooks and ponds, or planted among shrubs. The plant grows 4 or 5 feet high, is very bushy, and in August and September is covered with immense single flowers 6 to 8 inches across, from pure white to deep rose in color.

In separate colors. White, blush pink and deep rose. 15 cts. each, \$1.50 per doz., \$10 per 100.

Mixed colors. Strong plants, at a specially low price. \$1 per doz., \$6 per 100.

LIATRIS PYCNOSTACHYA

The popular name of this striking plant is Kansas Gay Feather. Nothing can be planted that will attract more attention on account of a very unusual appearance, but it is very beautiful as well as odd. It blooms in midsummer and throws up long, narrow spikes of rich purple flowers which last a long time. A peculiarity of this plant is its great attraction for butterflies. A plant in bloom is shown in above illustration. 15 cts. each, \$1.50 per doz., \$9 per 100.

LYCHNIS

Vespertina, Double White. Large, double, white flowers, which are produced in the greatest profusion during the entire summer, taking the place of the carnation at a season when double white flowers are scarce. 20 cts. each, \$2 per doz.

Splendens, Double Red (Ragged Robin). Forms a dense tuft of evergreen foliage, and in June it sends up tall spikes of handsome double, deep red flowers of exquisite fragrance, and remains in perfection six weeks. 15 cts. each, \$1.50 per doz.

Flos-Cuculi Flore Pleno. This is one of the most charming dwarf hardy plants in cultivation. It is covered in May and June with its lovely pink flowers, and if the old flower heads are cut off will bloom again freely in September. A bed should be in every garden. Fine for cut-flowers. 15 cts. each, \$1.50 per doz., \$8 per 100.

ORIENTAL POPPIES

I remember very well the first time I saw an Oriental Poppy. I was a boy then and it excited me wonderfully, and I thought it the most remarkable flower in the world, and now after twenty-five years have gone by and I have seen almost all the known flowers of the world I am still of the opinion that it is mighty fine, striking and effective, and I have taken the trouble to gather up and have grown a collection of several varieties. The foliage of Oriental Poppies dies away in the summer and many think they are dead, but they will start into growth again in the fall. They are rather hard to establish, but, once established, prove the most persistent perennial.

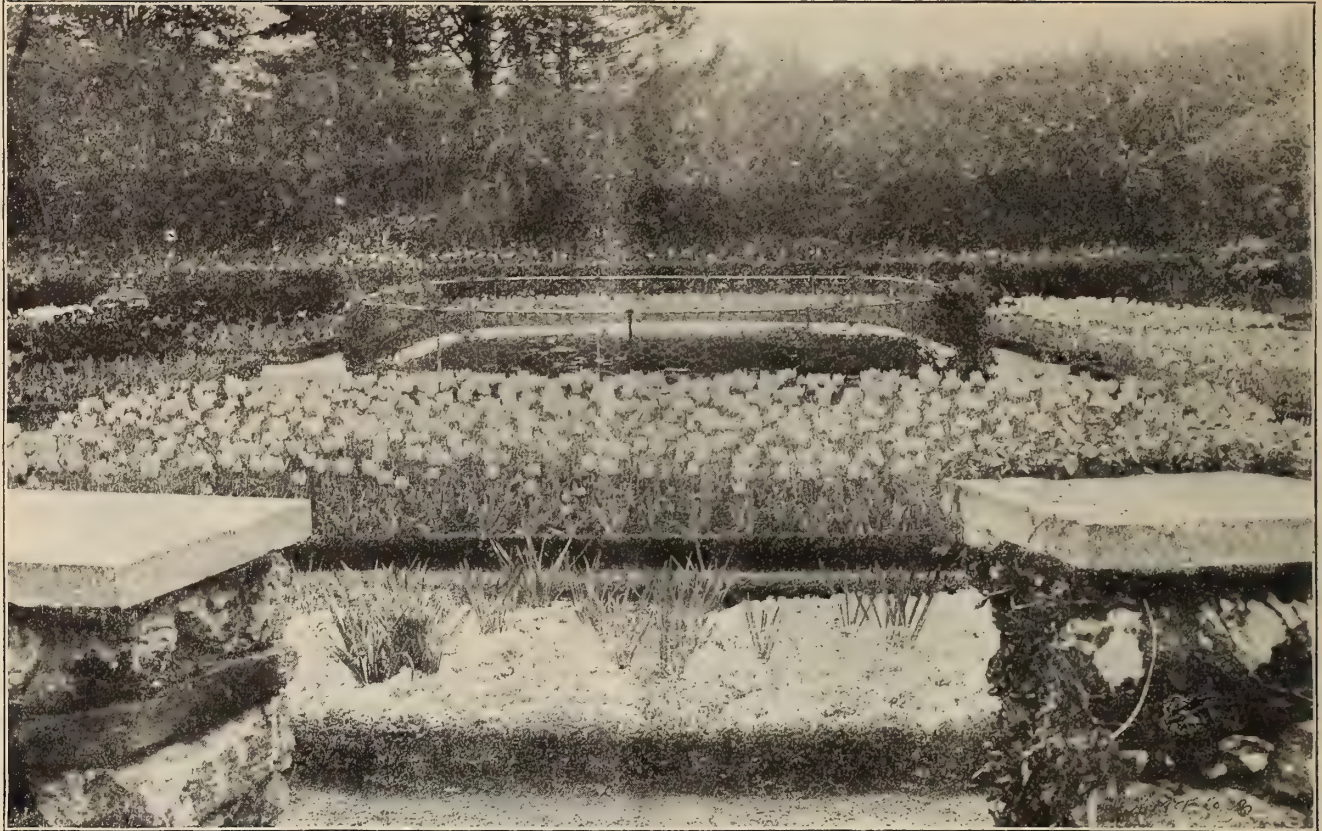
- | | |
|--|----------------------|
| | Per doz. |
| Oriente. The type. Immense orange-red flowers, 8 to 12 inches in diameter | \$8 per 100.. \$1 50 |
| Oriente, Brightness (Bracteatum). Flowers rich glowing salmon, with crimson-brown blotch at base of petals | 40 cts. each.. 4 00 |
| Oriente, Fire King. (New.) Large, fiery scarlet flowers, with glittering black center; very handsome; 2½ feet high | 50 cts. each.. 5 00 |
| Oriente, Mixed Hybrids | \$8 per 100.. 1 50 |
| Oriente, Monarch (Bracteatum). Large, brilliant orange-colored flowers, with black blotch at base of each petal; strong, erect sturdy grower; very distinct | 50 cts. each.. 5 00 |
| Oriente, Pink Beauty. Large, delicate flesh-pink flowers, with dark blotch at base of each petal; a very distinct color; 3 feet high | 35 cts. each.. 3 50 |
| Oriente, Royal Prince. Very large brilliant scarlet flowers | 50 cts. each.. 5 00 |
| Oriente, Salmon Perfection. (New.) Large, handsome rich glowing salmon-red flowers, with black blotch at base of petals; very beautiful; 3 feet high | 40 cts. each.. 4 00 |
| Oriente, Salmon Queen. Large, handsome, soft salmon-scarlet flowers | 45 cts. each.. 4 50 |
| Oriente, Trilby. Beautiful cerise-salmon | 50 cts. each.. 5 00 |

PENTSTEMON TORREYI

This very fine hardy plant is but little known, but is one of the really good things that should be in every garden. The plant grows from 4 to 6 feet high, and is covered with its showy crimson flowers all through the summer. 15 cts. each, \$1.25 per doz., \$8 per 100.



Rudbeckia, "Golden Glow" (See page 26)



Tulips and Phlox subulata

CREeping PHLOXES

The Creeping Phloxes are among the most charming of hardy plants. They cover the ground with a mat of evergreen foliage at all times, and during the month of May make the most beautiful carpet of white, purple or pink flowers. The bloom is so dense that the foliage is entirely hidden. These Phloxes bloom again in the fall, but not so freely. They are very useful for border edging, rock work or covering bare banks, and for covering graves. Planted in large masses nothing can be more effective.

	Per doz.	100	1,000
Subulata, Pink	\$1 00	\$7 00	\$50 00
“ Alba, White	1 00	7 00	50 00
“ “Model.” Finest of all Creeping Phloxes, bright pink	1 00	6 00	45 00
“ The Bride. White, red center	1 25	8 00	60 00
“ Atropurpurea. Deep rosy purple	1 25	8 00	60 00
Repens. A beautiful native variety growing about 8 inches high, with beautiful purplish pink flowers. Spreads rapidly; fine for growing in shady places or in the woods, also does well in the full exposure to the sun	1 25	8 00	

POLYGONUM CUSPIDATUM

A magnificent plant for producing bold masses of foliage, growing 8 feet high in good soil. Numerous fragrant white spiræa-like flowers issuing from the axils of the leaves. A stately plant for large flower-borders, shrubberies, wild gardens, banks of streams and ponds and for growing beneath large trees. 15c. each, \$1.50 per doz., \$8 per 100.

TUFTED PANSIES, OR BEDDING VIOLAS

The Tufted Pansies are hybrids of Pansies and *Viola cornuta*, and are quite distinct from Pansies in habit and coloring, and I think far more beautiful. The flowers are smaller, but unique in coloring, and the plants spread from the roots like a violet, making them true perennials. They are perfectly hardy, enduring the extremely cold weather of 1898-99 in an open border without protection. They are immensely popular in England and Scotland, where they are generally used for bedding and table decorations, and nothing can be more charming for either purpose. I have always admired these flowers in England, but was not certain that they would thrive in this climate, but after testing them a year in my garden I am convinced that they will do as well here as they do abroad. I have had a splen-

did lot of plants grown from the best collection in Scotland. They can be planted in the summer, fall or spring. Price, 15 cts. each; \$1 per doz., \$6 per 100.

EUROPEAN TREE PEONIES

Elsewhere in this catalogue I describe Japanese Tree Peonies. The European varieties are equally attractive, but being grafted on herbaceous peonies, will not sucker, which is the only drawback with the Japanese plants. The European plants do not bloom as young as the Japanese sorts. Fine plants in best named varieties, \$1.75 each, \$15 per doz.

PLATYCODON MARIESI

A valuable dwarf variety, bearing blue bell-shaped flowers, nearly 3 inches across, for a long season in late summer and early autumn. One of the finest of border plants. The unopened buds are nearly as beautiful as the flowers themselves, and are particularly interesting in their peculiar shape. Extremely effective when planted in groups. 15 cts. each, \$1.50 per doz., \$10 per 100.

POLYANTHUS, OR COWSLIP

This charming spring-blooming plant belongs to the Primrose family, the hardy varieties of which are so very popular in England, but are rarely seen in this country, owing partly to an impression that they cannot be grown in this climate. This is a mistake, as they do very well here. For the front of borders and shrubbery, for spring bedding, and for naturalizing in moist and partly shaded places, nothing can be finer. The coloring in the flowers is especially rich and fine. At this writing I have a long border of these plants in bloom in my garden, and nothing gives me greater pleasure. They are so charming in habit, rich and varied in coloring, and so early to bloom, coming with the spring-flowering bulbs, that nothing can be more acceptable. I use them freely for decorating the dining table and library windows, taking plants up from the border and putting them in fern dishes and pots, where they go on blooming as if they had never been disturbed. Their hardiness has been pretty well settled by the severe winter of 1898 and 1899. The minimum temperature at my country place was 24 degrees below zero. Not a single Polyanthus was injured, and they were planted in wet soil at that. 15 cts. each, \$1 per doz., \$6 per 100.

Large-Flowered White. An improved variety, with very large flowers; very fine. 20 cts. each, \$1.50 per doz.

PYRETHRUMS

The Pyrethrums are so simply and easily cultivated that they may be recommended to all who possess a garden, whether small or large. They are perfectly hardy and absolutely invaluable for cut-flowers through the summer and autumn months. The flowers are bright and elegantly borne on long stems, most convenient for vase decoration. In form the double varieties are somewhat aster- or chrysanthemum-like, and as their chief beauty is in the months of May and June, they may well be designated Spring Chrysanthemums, possessing the advantage over the chrysanthemums of being able to withstand the severest winter without protection. The single-flowered varieties are veritable colored marguerites and possess a range of color and hardness that marguerites might envy in vain. Nothing can surpass the Pyrethrum for profusion of flowers in the season; flowers succeed flowers without stint, and the blossoms are not injured by storm or sun. Their position should be the border or in beds. The plants may, with advantage, be cut down after June, which will keep up a greater succession of bloom through the autumn. Pyrethrums grow freely in any ordinary garden soil; a good rich loam suits them perhaps best, and in order to secure size, brilliancy and number of flowers, plenty of ordinary well-rotted manure may be added to well-trenched, well-drained soil, and plenty of water may be given when they are in bud in the dry summer weather. A mulching may be applied in dry localities with advantage. The older varieties have been greatly improved upon during the past ten or fifteen years, which is the period during which Kelway & Son have made them a specialty, and the refined shape and brilliant or soft shades of the newer sorts have caused the Pyrethrum to become deservedly popular. I offer a splendid lot of plants of the choicest single varieties grown from Kelway's famous strains.

All Colors Mixed. 20 cts. each, \$1.75 per doz., \$10 per 100.
Selected Varieties in Separate Colors: Crimson, whites, light pinks, deep pinks. 25 cts. each, \$2.25 per doz., \$13 per 100.

RUDBECKIA ("Golden Glow")

This hardy plant of recent introduction is entitled to rank with single hollyhocks for picturesqueness. In good soil it grows from 8 to 10 feet high, branches freely, and for two months in midsummer

is literally covered with its large bright yellow double flowers. As a garden or lawn plant it is extremely decorative, and equally so as a cut-flower, and very lasting. I have used this a great deal in my landscape work, and have found a large circular group of it surrounded by the dwarf *Rudbeckia speciosa* extremely effective. 15 cts. each, \$1.25 per doz., \$8 per 100.

SPIRÆA ARUNCUS KNEIFFI

A new variety that is entirely distinct from and superior to all existing kinds. It is of bold, yet graceful habit, attaining a height of 3 to 4 feet, with finely divided fern-like foliage, and a mass of pure white flowers, which are borne in graceful feathery sprays. A valuable addition to hardy border plants and a most desirable summer cut-flower. 50 cts. each.

THALICTRUM AQUILEGIFOLIUM

This is undoubtedly one of the most desirable hardy plants in cultivation. Its fine habit, beautiful foliage and masses of lovely flowers, varying from white to purple through all intermediate shades, make it one of the most handsome things that can be planted. Height 2 to 3 feet; blooming in May and June. 15 cts. each, \$1.50 per doz., \$10 per 100.

VIOLA CORNUTA

These plants are sometimes known as Horned Pansies. They are the most satisfactory of the violet family, perfectly hardy; they produce their beautiful purple or white flowers in the greatest profusion early in the spring, sometimes in March and continue in bloom until extremely hot summer weather comes on. The flowers are as large as small pansies and are thrown well above the foliage, which is neat, compact and beautiful.

	Each	Per doz.	
Blue	\$0 15	\$1 50	
Alba . White	20	2 00	
"Purple Queen." Pale lavender-purple	15	1 50	

Hardy Climbing Plants

	Each	Per doz.	100
ACTINIDIA polygama	\$0 50	\$5 00	
AKEBIA quinata	25	2 50	
AMPELOPSIS Veitchi	20	1 75	\$12 00
Roylei	25	2 50	
Roylei . Extra strong	40	4 00	
Quinquefolia (Virginia Creeper)	20	2 00	11 00
Quinquefolia variegata	25	2 50	15 00
ARISTOLOCHIA Siphon (Dutchman's Pipe)	50	5 00	
BERCHEMIA racemosa	25	2 50	
BIGNONIA radicans (Native Trumpet Creeper). Orange-red	25	2 50	
Grandiflora (Chinese Trumpet Creeper)	30	3 00	
Thunbergii . Scarlet	35	3 25	
Madam Galen . Fine dark red; free bloomer.	35	3 50	
CELASTRUS scandens (Bitter Sweet)	25	2 50	
Paniculatus . New variety from Japan. Very handsome, vigorous vine, with splendid showy fruit	40	4 00	
CLEMATIS coccinea	25	2 00	14 00
Henryi . Best large-flowered; white	50	5 00	
Vitalba	25	2 00	16 00
Jackmani	50	5 00	
Jackmani . Extra large	1 00	10 00	
Paniculata . New and very fine; extra strong plants	25	2 50	
Crispa	25	2 00	16 00
Flammula	25	2 50	
Virginiana	25	2 50	15 00
DOLICHOS Japonica (Japanese Hardy Bean). The fastest-growing vine in cultivation	30	3 00	
EUONYMUS radicans . A splendid Evergreen vine of slow growth and elegant rich foliage. In Erie I saw the base of the walls of a stone house covered with this vine. The effect was extremely fine	20	1 50	10 00

	Each	Per doz.	100
EUONYMUS radicans variegata . A most beautiful evergreen vine, suitable for covering low walls or for carpeting the ground. For covering the walls of a house for a few feet only nothing can be finer	\$0 20	\$2 00	\$13 00
HONEYSUCKLE Japonica (Evergreen), Halliana , Brachypoda , Aureo reticulata , (golden), two years or pot-grown	20	2 00	12 00
Heckrotti . A superb and scarce sort; undoubtedly the finest Honeysuckle in cultivation	25	2 50	
LYCIUM Chinense (Matrimony Vine)	20	2 00	
MENISPERMUM Canadense (Moonseed)	25	2 50	
PERIPLOCA Græca (Silk Vine)	40	4 00	
POLYGONUM Baldschuanicum . A new and vigorous growing climber that is attracting a great deal of attention in England. Very free flowering; the small branchlets bear large panicles of pure white flowers	2 50		
VITIS Colnetiæ . New Japanese ornamental Grape-vine of rapid growth and exceeding beauty	50	5 00	
Æstivalis (American Wild Grape)	20	2 00	
Riparia (American Wild Grape)	15	1 50	10 00
Odorata (Sweet-scented Wild Grape). Very fragrant	25	2 50	
WISTARIA Sinensis . Purple	30	3 00	17 00
Sinensis alba . White	50	5 00	30 00
Multijuga (Japanese Wistaria). A superb variety with racemes of flowers often 3 feet long	30	3 00	
Multijuga alba . White flowered	30	3 00	
Frutescens . Our native Wistaria; flowers in the summer time	25	2 50	



HARDY PLANTS

(Herbaceous Perennials)

Until hardy plants come into general use we cannot hope for artistic, interesting and beautiful gardens in this country. People of taste and culture are realizing the ugliness of the stereotyped bedding with lines of color, and will no longer allow their lawns to be daubed with a flower garden like a colored lithograph, although many of our public parks are still guilty of this atrocious work. With the material offered in this list the most beautiful and interesting gardens are to be made, gardens that increase in interest and beauty year after year; gardens that change their aspect with every change of season. To make a garden with hardy plants and shrubs requires far more taste and knowledge than it does to make one with the few varieties of bedding plants generally used, but the majority of gardeners do not have this knowledge, and no idea of proper arrangement. But the garden of hardy plants has this advantage: the individual beauty of the plants themselves is so great that a garden cannot fail to be interesting and lovely, no matter how badly arranged, if the cultural skill is sufficient to bring them to perfection. People desirous of having really fine gardens will find William Robinson's book, the "English Flower Garden," most helpful. It is the best and most comprehensive book ever written on gardening. Every plant and shrub worthy of consideration is described and cultural directions given; several chapters are devoted to the arrangement of gardens, and the book is profusely illustrated with pictures made in the best gardens in England. This book is not generally on sale, but can be ordered through any bookseller.

Hitherto it has been impossible to get satisfactory varieties and plants of perennials; in fact, no nursery in this country has had a satisfactory general stock of hardy plants, and I have had the greatest difficulty in getting the plants specified for my landscape gardening work, as this class of plants is

Polyanthus, or Cowslip (See page 26)

extremely difficult to import. The difficulty became so great, and my work so hampered by the lack of plants to carry it out, that I persuaded one of the most capable horticulturists in this country to start a hardy plant nursery and guaranteed the financial results. It is the intention to make this nursery a model of its kind, and grow everything in hardy plants worthy of culture, and to send out nothing but well-grown plants packed in the most careful manner. Most of the plants described in the following pages are the offerings of this nursery (the Springdale Nursery).

SPECIAL OFFERS OF HARDY PLANTS IN VARIETY

The Springdale Nursery authorizes me to make the following remarkably low prices for hardy plants. They will be of the best and most desirable varieties and the plants of the best quality, but in every instance the selection of varieties is to be made by me; but if purchasers will state the things they have, or don't wish, these will not be included in the selection. Sometimes people write asking for a list of the plants contained in these collections. This can not be given, so please save me the unpleasantness of refusing by not asking for it.

- Offer No. 1 of Hardy Plants. Twenty-five first-class plants in variety for.....\$2 50
- Offer No. 2 of Hardy Plants. Fifty first-class plants in variety for..... 4 00
- Offer No. 3 of Hardy Plants. One hundred first-class plants in varied assortment of best species and varieties for..... 7 00
- Offer No. 4. Five hundred Hardy Plants, same as above, but in larger variety, for...30 00
- Offer No. 5. One thousand Hardy Plants, same as above, but in much larger variety, for...55 00



Japanese Anemone (See opposite page)

HARDY HERBACEOUS PERENNIAL PLANTS, continued

In the following list height and time of blooming are indicated as follows: Figures following the letter H indicate height in feet; figures following the letter F indicate the number of the month or months the plants bloom in. This is only approximate, as height and time of flowering varies considerably with soils, climates and seasons.

Prices quoted are for not less than half the quantities named, but single plants will be furnished at following low rates: Plants at \$1 or less per dozen, 10 cents each; plants at \$1.25 and \$1.50 per doz., 15 cts. each; plants at \$1.75 and \$2 per doz., 20 cts. each; plants at \$2.50 and \$3 per doz., 25 cts. each.

	Per doz.	100
ACANTHUS mollis. A striking foliage plant	\$2 50	
ACONITUM Napellus (Monkshood). Beautiful, but poisonous plant with blue flowers	2 50	
ACHILLEA Ptarmica fl. pl. One of the most useful plants; numerous and dense masses of white flowers, fine for cutting. H 1 to 2, F 6 to 10.....	1 00	\$6 00
Millefolium roseum. Red flowers produced in profusion for a long season; little known in this country, but very popular in England. H 1 to 3, F 4 to 10.....	1 25	8 00
Ægyptica. Sulphur-yellow flowers, silvery gray foliage; very neat. H 1 to 3, F 6 to 8.....	1 25	8 00
"The Pearl." An improvement of Ptarmica fl. pl. H 2, F 6 to 10.....	1 25	6 00
ÆTHIONEMA grandiflora. Flowers in rosy racemes. H 2, F 5 to 8.....	1 50	
ACROSTEMMA coronaria. Beautiful rich crimson flowers. H 1½, F 7.....	1 25	8 00
Coronaria Walkeri. Brilliant crimson. H 1, F 7.....	1 50	10 00
Coronaria alba. Pure white	1 25	8 00
Coronaria atrosanguinea. Very brilliant dark crimson	1 25	8 00
Coronaria bicolor. White and red	1 25	8 00
Flos Jovis. Extremely desirable rose-tinted flowers, fine for cutting. H 1½, F 7	1 25	8 00
ALYSSUM saxatile compactum. Masses of golden yellow flowers, invaluable for spring flowering. H 1, F 4.....	1 25	8 00
AMSONIA Tabernæmontana. Desirable perennial with lead-colored blue flowers. H 2, F 5 to 6	1 50	
ANEMONE Pennsylvanica. A beautiful native Anemone, fine for naturalizing. H 1½, F 6.....	1 25	8 00
Japonica rosea. Purplish rose. H 3 to 5, F 9 to 10. 1 50	1 50	10 00
Japonica rosea elegans. Improved variety. H 3 to 5, F 9 to 10.....	1 50	10 00
Japonica alba. White. H 3 to 5, F 9 to 10.....	1 25	8 00
Japonica "Whirlwind." New semi-double variety, white. H 3 to 5, F 9 to 10	1 50	8 00

This charming Japanese anemone is among the most beautiful things in cultivation. It is perfectly hardy, and in a strong, rich soil will grow 4 to 5 feet high. It is a mass of beautiful white bloom from late summer until heavy frosts. It should be in every garden, and on large places it should be planted by the hundred.



Hardy Asters (See page 30)
(From "Wood and Garden")



Aquilegias

	Per doz.	100
ANTHEMIS Kelwayi. Soft, clear yellow. H 1½, F 6 to 8.....	\$1 25	\$8 00
Tinctoria. Yellow, free-flowering, thrives in any soil. H 1½, F 6-8.....	1 25	8 00
ANTHERICUM Liliastrum. (St. Bruno's Lily). Pure white, fragrant, graceful, lily-like plant, preferring partial shade	1 75	
AQUILEGIA cærulea (Rocky Mountain Columbine). The most beautiful of all Columbines, and of the most charming hardy flowers in cultivation. H 1½, F 4 to 5.....	1 75	12 00
Cærulea lutea. New; large, light yellow flowers. H 1 to 2, F 4 to 5	1 75	12 00
Canadensis (native). Red and yellow. H 1, F 5.....	1 50	10 00
Skinnerri. Scarlet, handsome and distinct. H 3 to 4, F 5.....	1 50	10 00
Chrysantha. Beautiful golden yellow flowers; blooms for two months. H 3 to 4, F 5 to 6.....	1 50	8 00
Chrysantha alba. A white variety of the above	1 25	8 00
Stuarti. Large, erect, blue flowers, pure white corolla; splendid.....	1 50	9 00
Glandulosa. Splendid dwarf variety with lovely blue and white flowers....	1 50	10 00
Jaetschaui. Large yellow flowers, with reddish spurs	1 50	10 00
Californica. Large orange-yellow flowers.....	1 50	10 00
Truncata. Scarlet and yellow dwarf, very early.....	1 50	10 00
Alpina superba. Blue and white.....	1 50	10 00
Vulgaris. Old-fashioned double Columbine.....	1 25	8 00
Six choice Aquilegias, in six varieties, for 75 cts., or 12 plants, in 12 varieties, for \$1.50.		
ARALIA. Splendid foliage plants, growing 6 to 8 feet high; of striking effect.		
Cordata	5 00	
Edulis	2 00	
Cachemirica	3 00	

HARDY HERBACEOUS PERENNIAL PLANTS, continued

ARUNDO Donax. Splendid for making tropical-like groups; will grow 16 feet high in rich soil. \$3 per doz., \$20 per 100.



Bocconia

Donax macrophylla. An improved variety with broader leaves. 50 cts. each.

Donax variegata. Striking variegated foliage. H 5 to 8. \$2.50 per doz., \$15 per 100.

ARMERIA maritima (Thrift or Sea Pink). \$1.50 per doz.

Dianthoides. \$1.50 per doz.

ARRHENATHERUM bulbosum variegata. A neat and distinct new variegated grass which should prove very attractive in the rock garden. \$2.50 per doz.

ASCLEPIAS tuberosa. Orange-scarlet; one of the showiest and finest hardy plants grown. H 1 to 2, F 7 to 9. \$1.50 per doz., \$10 per 100.

Incarnata. Rosy pink flowers; very desirable. H 2 to 3, F 7 to 9. \$1.50 per doz., \$10 per 100.

ASPARAGUS verticillata. A striking variety of hardy Asparagus. \$1.25 per doz.

ASTER Novæ-Angliæ rubra. The best of the American "Hardy Asters;" very showy. H 3 to 4, F 9 to 10. \$1.50 per doz., \$8 per 100.

Amellus. A splendid European hardy Aster; purple, large flowers. H 2, F 8 to 9. \$1.50 per doz., \$8 per 100.

Top Sawyer. Clear blue; very fine. H 4 to 5, F 9. \$1.50 per doz., \$8 per 100.

Turbinellus. Delicate mauve. H 2 to 4, F 9. \$2.50 per doz.

Tataricus. Large flowers and very late. H 5 to 6, F 9 to 10. \$1.50 per doz., \$8 per 100.

Lady Trevelyan. Large, pure white; fine for cutting. H 3 to 4, F 8 to 9. \$1.75 per doz., \$9 per 100.

Ptarmicoides. A dwarf, early-flowering, hardy Aster, blooming in July and August. Its charming white flowers are produced in the greatest profusion. Distinct and good. \$1 50 \$8 00

White Queen. White flowers. H 4, F 9. 1 50 8 00

Trinervius. White, with purple and yellow disc. H 3½, F 8 to 9. 1 50 8 00

Isaac Wood. Large blue flowers. 1 50 8 00

Oblongifolius. One of the most beautiful of our native varieties. 1 50 2 00

Alpinus. Dwarf variety; blooms latter part of May. 2 00

AUBRIETIA violacea. Valuable evergreen trailer. H 1 to 6, 1 to 3, F 4 to 5. 1 25 6 00

BAPTISIA australis 1 00 6 00

BELLIS perennis (Double Daisy). Assorted colors. H ½, F 4 to 5. 50 3 00

BERGAMOT. See Monarda.

BLEEDING HEART. See Dicentra.

BOCCONIA microcarpa 2 00

Thunbergii 2 00

Japonica 3 00

Cordata. Large, broad, striking leaves; large plumes of white flowers; fine for subtropical effects. H 5 to 7, F 7 to 8. 1 50 10 00

BOLTONIA latisquama. Light blue flowers, very lovely; blooms late in fall; highly recommended. H 3 to 4. 1 50 10 00

CALLIRHOË involuocrata. Large crimson flowers; trailing habit; very showy. 1 25 8 00

CALYSTECIA pubescens plena. Large pale double rose flowers; blooms in the greatest profusion. It flowers for several months, and is one of the best and showiest of hardy climbers. 1 25

CAMPANULA (Bell Flower). The Campanula genus is one of the largest and choicest. The varieties are all of elegant habit and should be represented in every garden.

CAMPANULA turbinata. Large, erect blue flowers; fine. Per doz. 100 \$1 75 \$12 00

Turbinata alba. Charming white flowers. H ½ to 1, F 7 to 8. 1 50 10 00

Medium (Canterbury Bells). One of the showiest and prettiest of garden plants, but being only a biennial, dies after blooming. 1 50 10 00

Persicifolia alba. White flowers; a grand border plant. H 1 to 3, F 7. 1 50

Grandiflora Mariesii. Large white and purple flowers; very desirable. 1 50 10 00

Carpatica. Dwarf; light blue. H ¼, F 6. 1 50 10 00

Macrantha. Large blue flowers; one of the best. 1 50 10 00

Rotundifolia. Slender stems with deep blue flowers; charming. 1 50 10 00

Punctata. Strong, erect spikes, fine and showy; one of the best. 1 25 8 00

Glomerata. Rich deep blue flowers in dense head; extra fine and effective. H 1 to 5, F 5 to 6. 1 25 8 00

Nobilis alba. Fine foliage and flowers. 1 50

CANDYTUFT. See Iberis.

CANTERBURY BELLS. See *Campanula Medium*.

CARDINAL FLOWER. See Lobelia.

CASSIA Marilandica. Handsome pinnate foliage and numerous racemes of showy yellow flowers; an extremely desirable plant of the easiest culture. H 4 to 5, F 7. 1 00 5 00

CATANANCHE cærulea. White flowers, useful for cutting. H 2½, F 6 to 9. 1 25

Bicolor. Blue and white. H 2½, F 6 to 9. 1 00

CENTAUREA Babylonica. Showy yellow flowers; suitable for planting in shrubberies and large borders. H 6 to 10, F 7. 1 50

Macrocephala. Yellow; very fine. H 3 to 5, F 7. 1 50

Montana (Mountain Knapweed). Blue flowers. H 2, F 6. 1 50

CERASTIUM tomentosum. Very dwarf plant, covered with small white flowers; very desirable for carpeting or edging borders and beds; silvery white foliage, which is very attractive throughout the season. 1 25 8 00

CHEIRANTHUS Sibiricus. A new hardy Wallflower of great beauty; brilliant orange flowers produced in great profusion. H 1, F 4 to 5. 2 00 12 00

CHRYSANTHEMUM, Hardy Pompon Varieties. H 2 to 3, F 10 to 11. 1 50

Hardy Large-Flowered Varieties. These and the preceding varieties are the old-fashioned Chrysanthemums that used to be in every garden. They are perfectly hardy, and make a brave show of color late in the fall, after all other flowers are gone. H 3 to 4, F 10 to 11. 1 50

Latifolium. Similar to the Maximum but much better; one of the most satisfactory of hardy plants; highly recommended, fine for cutting. H 2, F 6 to 9. 1 50 10 00

Maximum. Large, single, daisy-like flowers. 1 25 8 00

Maximum fillifera. A dwarf, improved form of Maximum. 1 50 10 00

Leucanthemum (Shasta Daisy). Advertised as a California wonder. 50 cts. each.

Leucanthemum Triumph. Another improved variety with large flowers. \$1.50 per doz.

CLEMATIS Recta. (See page 22.)

Davidiana. This is an herbaceous plant instead of a climber, and has beautiful blue flowers and handsome foliage; very desirable. \$1.75 per doz.

COREOPSIS lanceolata. \$1 per doz., \$6 per 100.

Grandiflora. An improved variety with large bright yellow flowers; fine for cut-flowers; one of the best hardy plants in cultivation. H 2 to 3, F 5 to 7. \$1 per doz., \$6 per 100.

Verticillata. \$1.50 per doz.



Campanula turbinata

HARDY HERBACEOUS PERENNIAL PLANTS, continued

	Per doz.	10
CORONILLA varia. Rambling sheets of beautiful pink bloom. H 1, F 5 to 10.....	\$1 25	
CONVALLARIA majalis (Lily-of-the-Valley). Pips 40 cts. each..	2 00	
CRAMBE cordifolia. One of the finest large-leaved herbaceous plants, valuable where a striking and bold effect is required; its white flowers are produced in profusion.....	35 cts. each.	3 50
Pinnatifida. Same as above, but dwarfed.....	40 cts. each.	4 00
CYPRIPEDIUM spectabile. The most beautiful hardy orchid, and one of the most lovely flowers in the world; does well in a shady, moist location outdoors, and forces well in the greenhouse for Easter.....	3 00	\$20 00
DAY LILY, White. See Funkia.		
Yellow. See Hemerocallus.		
DELPHINIUMS, Chinese. Dark blues, small flowered, elegant and distinct dwarf species.....	1 50	9 00
Formosum. A splendid old hardy plant, with dark intense blue flowers. H 4 to 5, F 6 to 7.....	1 25	8 00
Formosum caelestina. New; light; of great beauty.....	2 50	
Fine Mixed. Tall English. H 4 to 8, F 6 to 9.....	1 50	8 00



Cypripedium spectabile

	Per doz.	100
DIANTHUS barbatus (Sweet William). Improved auricula-flowered.....	\$1 25	\$8 00
Fimbriata alba (White Fringe Pink). H 1 to 2, F 5.....	1 50	10 00
Scoticus fl. fl. (Double Scotch Pink). Desirable.....	1 25	8 00
"Her Majesty." A fine hardy white Pink.....	1 50	10 00
Plumarius, Pheasant's Eye (Hardy Pink).....	1 00	6 00
Plumarius semperflorens. One of the most beautiful Pinks in cultivation; blooms all season.....	1 50	10 00
Deltoides. A species with.....	1 50	8 00
Laur		
Prince Arthur	1 50	10 00
Juliette	1 50	10 00
Souvenir de Sale	1 50	10 00
DICENTRA Cucullaria	15	75
Spectabilis (Bleeding Heart). H 1 to 2, F 4.....	1 75	12 00
Spectabilis alba (White-flowered Bleeding Heart).....	2 00	
Eximea. Beautiful fern-like foliage; blooms all summer. H 3/4 to 1 1/2, F 4 to 8.....	1 75	12 00
DRACOCEPHALUM Ruyschiana. Dark violet-blue, neat border plant, H 2, F 6.....	1 50	10 00
Virginianum. Tall, white-flowered variety.....	1 50	

	Per doz.	100
DICTAMNUS. The Dictamnus is one of the most satisfactory hardy plants in cultivation, both on account of splendid flowers and its rich durable foliage.		
Fraxinella. H 2, F 5 to 7.....	\$2 00	\$14 00
Fraxinella alba. H 2, F 7 to 8.....	3 00	
DIGITALIS purpurea (Foxglove). H 4 to 7, F 7.....	1 50	10 00
Veitch's. Finest spotted and improved strain.....	1 75	10 00
Gloxinæflora	1 50	8 00
Maculata superba	1 50	8 00
Monstrosa	1 75	
Lanata. Very curious.....	1 50	
Grandiflora	1 50	
Buxbaumii	1 50	
DORONICUM Plantagineum excelsum. A splendid spring-flowering plant; yellow flowers. H 2 to 3.....	1 75	12 00
EPICÆA repens (Trailing Arbutus). The most charming of our wild-flowers, deliciously fragrant; very difficult to transplant; must be grown in shade....	1 75	12 00
EPILOBIUM angustifolium. Crimson flower; suitable for naturalizing. H 3 to 6, F 7.....	1 50	
ERIANTHUS Ravennæ. A splendid tall-growing grass suitable for tropical effects. H 8 to 12, F 9 to 10.....	3 50	20 00
ERYNCIUM Yuccæfolium (Sea Holly.) Curious and beautiful plants.....	3 00	
Pulchellum	2 00	
Ebeneum	3 00	
ERYSIMUM pulchellum. Dwarf plant like a wallflower.....	1 50	
EULALIA. The Eulalias are splendid grasses for making beds and groups for tropical effects.		
Japonica variegata. H 5 to 7.....	1 25	6 00
Japonica Zebrina. H 5 to 7.....	1 25	6 00
Gracillima. New; very graceful. H 5 to 7.....	1 25	6 00
EUPHORBIA corollata. A choice native plant, white flowers; largely used by florists for cut-flowers.....	1 50	8 00
EUPATORIUM purpureum. A splendid native plant, growing 6 to 10 feet high, with immense head of purplish pink flowers; fine for naturalizing along streams and ponds and for planting among shrubbery. F 7 to 9.....	1 50	10 00
EVENING PRIMROSE. See <i>Oenothera</i> .		
FERNS. Best hardy varieties.....	1 25	8 00
FESTUCA glauca	2 00	
FOXGLOVE. See <i>Digitalis</i> .		
FRAGARIA indica (Indian Strawberry). A creeper with yellow flowers followed by bright red fruit.....	1 00	
FUNKIA subcordata (White Day Lily). H 1 1/2, F 5 to 8.....	1 50	10 00
Variegata. Variegated foliage, blue flowers, H 1, F 5.....	1 25	8 00
Cœrulea (Blue Day Lily). H 2 1/2, F 7.....	1 25	8 00
Sieboldi. One of the finest of hardy plants on account of splendid foliage. H 2 to 3, F 7 to 8.....	2 00	14 00
Aurea maculata. Young foliage in early spring is of a bright yellow color.....	2 50	
Undulata argentea. Silver variegation.....	2 50	
Aoki	2 50	
CAILLARDIA. Hardy varieties. (See p. 24). 1 25 7 00		
GLOBULARIA Tricosantha (Globe Daisy). Light blue flower. H 1/2 to 3/4, F 5.....	1 50	
HELIANTHUS. The hardy Sunflowers are among the most desirable of hardy plants. They are free-flowering, have a long season of bloom, are very decorative in the garden, and are fine for cutting. All have bright yellow flowers.		
Tuberosa (Jerusalem Artichoke). Very decorative, grows 12 feet high; also a desirable vegetable.....	1 00	6 00
Multiflorus. Great hardy Sunflower.....	1 50	10 00
Multiflorus plenus. Double hardy Sunflower. H 5 to 9.....	1 50	10 00
Doronicoides. Very tall, fine for planting among shrubbery.....	1 50	10 00
Loetiflorus. The best; free-flowering, single yellow flowers, fine for cutting. H 4 to 5, F 7 to 8.....	1 25	7 00
Rigidum. Distinct and good. H 4 to 5, F 7 to 8.....	1 50	10 00
Maximiliana. Tall and very late; one of the most stately and elegant hardy plants in cultivation; best Sunflower to bloom in the fall. H 7 to 9, F 10 to 11.....	1 50	10 00
Miss Mellish. Very large duplex flowers of exquisite shape and bright orange-yellow, freely produced during August and September; grand for cutting. H 5.....	2 50	

HARDY HERBACEOUS PERENNIAL PLANTS, continued

	Per doz.	100
HELIANTHUS mollis grandiflorus	\$1 75	\$10 00
Oryalis. A very striking, tall Sunflower. H 5 to 6, F 6 to 10.....	1 50	10 00
Soleil d'Or. An improved double yellow hardy Sunflower.....	1 50	10 00
Trachelifolius	1 25	7 00
Giganteus. Pale yellow flowers, 3 inches across; very elegant. H 4 to 5, F 8 to 9.....	1 50	8 00
"Golden Bouquet." A new hardy Sunflower, blooming very early; slender stems bearing a multitude of small golden flowers.....	1 50	
Buttaris	1 50	
HELIANTHEMUM mutabile (Sun Roses). Charming dwarf evergreen plants with pink and white flowers. H ½, F 5 to 6.....	1 75	
HELENIUM Hoopesii. Bright orange flowers. H 2 to 3, F 7 to 8.....	1 50	
Autumnale superba. An improved variety of great beauty.....	2 00	
Grandiflorum striatum. Yellow with reddish stripes; new and distinct.....	2 50	
HELIOPSIS Pitcheriana. Similar to the hardy Sunflowers, but blooming during a much longer season. H 3 to 6, F 8 to 10.....	1 25	8 00
HELLEBORUS niger (Christmas Rose).....	4 50	30 00
HEMEROCALLIS flava (Lemon Day Lily). H 2 to 3, F 6 to 7.....	1 50	10 00
Fulva (Orange Day Lily). H 2 to 3, F 6 to 7.....	1 25	8 00
Fulva flore pleno. Double.....	1 75	12 00
Graminea. Bright yellow; one of the best.....	1 50	10 00
Dumortieri. H 1½, F 6 to 7.....	1 50	10 00
Aurantiaca major. New and very beautiful.....	.50 cts. each.	5 00
Thunbergii. Bright yellow. H 3, F 7 to 8.....	1 50	
Sieboldii. Clear, deep bright yellow. H 3, F 5 to 6.....	1 75	
HERACLEUM giganteum (Giant Parsnips). A remarkable foliage plant of striking appearance.....	.25 cts. each.	2 50
Leichtlinii25 cts. each.	2 50
HESPERIS matronalis, Purple (Sweet Rocket). H 2 to 3, F 6 to 9.....	1 00	6 00
Matronalis, White	1 00	6 00
HEUCHERA sanguinea. Very choice, graceful dwarf plant with lovely crimson flowers; fine for cutting. H ¾ to 1½, F 7 to 9.....	1 75	12 00
Alba. New white variety.....	1 75	



A Colony of Candytuft (Iberis)



Hesperis matronalis

	Per doz.	100
HIBISCUS Moscheutos. Bright pink.....	\$1 50	\$10 00
Moscheutos, "Crimson Eye." White. H 3 to 6, F 8 to 10.....	1 50	10 00
HOLLYHOCKS, Best Double	1 50	
Best Single	1 25	
HONESTY. See Lunaria.		
HYACINTHUS candicans. Showy white flowers, blooming in summer; easiest culture.....	50	3 00
IBERIS (Candytuft) corifolia. Large snow-white flowers. H ¾, F 5.....	1 50	10 00
Sempervirens (Hardy Candytuft). One of the most desirable spring-flowering plants. It covers the ground with a mat of pure white flowers. H ¾ to 1, F 4 to 5.....	1 50	10 00
Sempervirens nana. Improved dwarf variety.....	1 25	8 00
Sempervirens, "Queen of Italy." A new dwarf variety with violet flowers; very pretty.....	1 25	8 00
IPOMCEA pandurata. Known as a hardy Moonflower; a free-flowering and very desirable hardy climber.....	1 50	10 00
IRIS Kämpferi (Japanese Iris). See page 15.		
Pseudo-acorus variegata. Foliage beautifully variegated; flowers rich yellow; suitable for marshes and water-courses. H 3, F 5 to 6.....	2 00	
Germanica (German Iris), in 25 choice named varieties. H 2 to 3, F 6.....	1 00	5 00
Germanica, "Silver King." A most beautiful variety of rich silvery white color.....	1 00	5 00
Germanica, Mixed varieties	75	3 50
Sibirica alba. White.....	75	3 00
Florentina (Orris Root). Very large white fragrant flowers; very fine and lasting; desirable for cutting. H 2, F 5 to 6.....	2 00	
Tectorum	1 00	
LATHYRUS latifolius splendens. Bright pink.....	.25 cts. each.	2 50
Latifolius albus (White Everlasting Pea). These everlasting peas are but little known in this country, but are great favorites in England. They are extremely showy and fine.....	.25 cts. each.	2 50
LAVENDER. The well-known garden herb.....	1 00	
LEPACHYS pinnata. Single yellow flowers like a rudbeckia; graceful and showy. H 4 to 5, F 7 to 8.....	1 75	



Single Pyrethrus (For special description see page 27)

HARDY HERBACEOUS PERENNIAL PLANTS, continued

	Per doz.	100		Per doz.	100
LIATRIS pycnostachya. A most striking hardy summer-blooming plant, with great rocket-like spikes of purple flowers; continues a long time in bloom. H 3 to 5, F 6 to 9	\$1 50	\$10 00	LYSIMACHIA nummularia aurea (Golden Moneywort). Fine for carpeting	\$1 25	\$5 00
Spicata. H 1 to 2, F 9	1 50	10 00	Clethroides (Loosestrife). Semi-aquatic, with white flowers. H 2 to 3, F 7 to 9	1 25	
LINARIA Hendersonii	1 25		Stricta	1 25	
LINUM perenne (Flax). H 1½, F 6 to 8	1 25	8 00	MERTENSIA Virginica. A lovely blue flower, blooming in early spring. H 2, F 4	1 50	10 00
Perenne album	1 25	8 00	Sibirica	1 50	
Perenne roseum	1 25	8 00	MONARDA didyma (Bergamot). Very showy crimson flowers. H 2, F 7 to 9	1 25	8 00
LOBELIA cardinalis. Native plant, with intensely brilliant cardinal flowers; extremely desirable. H 2 to 3, F 7 to 9	1 50	8 00	Didyma rosea	1 50	9 00
LUNARIA biennis (Honesty)	1 25		Fistulosa (Wild Bergamot). Mixed colors. H 2 to 4, F 6 to 8	1 00	6 00
LYCHNIS Viscaria splendens	1 25		MONTBRETIA crocosmæflora. Hardy, bulbous, with brilliant orange and scarlet flowers	50	3 50
Chalcedonica. Dense heads of brilliant scarlet flowers; one of the best border plants. H 1½ to 3, F 5 to 8	1 25	8 00	MORINA longifolia. Handsome and singular; fine spikes of flowers; ornamental leaves. H 2 to 3, F 6 to 7	2 00	
Chalcedonica flore pleno. A fine double variety; fine for cutting	1 50	9 00	MYOSOTIS palustris semperflorens (Water Forget-Me-Not). Splendid for naturalizing on edge of ponds and streams, also for beds and borders; blooms all summer	1 25	6 00
LYTHRUM superbum roseum. Very showy; splendid for banks of streams and ponds. H 3 to 5, F 7 to 8	1 50	8 00	Dissitiflora. Best for shady borders	1 00	6 00

HARDY HERBACEOUS PERENNIAL PLANTS, continued

	Per doz.	100		Per doz.	100
CENOTHERA (Evening Primrose). The Evening Primroses are desirable and striking, and very effective in the garden on moonlight nights.					
Splendens. A splendid dwarf variety, blooming in the daytime	\$1 25	\$8 00			
Missouriensis. H ½, F 6 to 8	1 25	8 00			
Lamarckiana.	1 50	10 00			
ONOPORDON Acanthium (Scotch Thistle). Noble plant, with striking foliage and showy purple flowers	2 50				
Arabicum. Both sides of leaves and stems covered with white down. H 8 to 10	2 50				
Acaule	35 cts. each				
Tauricum	3 00				
OROBUS lathyroides. Charming border plant and fine for rockery	1 75				
PANSIES, Best Strain. Plants for spring bedding	50	3 50			
PAPAVER orientale (Great Oriental Poppy). Splendid. H 3, F 6	1 50	9 00			
Bracteata	1 75	12 00			
PARDANTHUS Chinensis (Blackberry Lily)	1 25	8 00			
PENTSTEMON barbatus Torreyi. Brilliant crimson and orange flowers in July; one of the best hardy plants. H 3 to 5	1 25	8 00			
Digitalis. Showy spikes of pure white flowers	1 25	8 00			
Cobæa	1 50				
Spectabilis	1 50				
PEONIES, Good Varieties. Assorted	2 00	12 00			
Named Varieties25 cts. to \$1 each; \$2.50 to 10 00					
PHLOX. The Creeping Phloxes are among the most charming of hardy plants. They cover the ground with a mat of green at all times, and during the month of May make a most beautiful carpet of white or pink flowers.					
Best Perennial Named Varieties. Clumps from open ground; a fine collection	1 50	10 00			
Procumbens	1 00	6 00			
Subulata	1 00	7 00			
Subulata alba	1 00	7 00			
Subulata "Model." Finest of all Creeping Phloxes	1 00	6 00			
Atropurpurea. Creeping; of great beauty and vigor	1 25	8 00			
PHLOX divaricata. A beautiful native Phlox, with purple flowers. H 1, F 5	1 00	5 00			
Carolina. A rare native variety with bright blue flowers; extremely desirable for spring bedding	1 50	8 00			
PHYSOSTEGIA Virginica. Erect spikes of pretty pink flowers. H 1½ to 2½	1 50				
Virginica alba. A beautiful white variety. H 2 to 3, F 7 to 8	1 50				
PINK. See Dianthus.					
PLANTAIN LILY. See Funkia.					
PLUME POPPY. See Bocconia.					
PLUMBAGO Larpentæ. A dwarf plant covering the ground completely with its foliage. In September it is a mass of beautiful deep blue flowers, which gradually change to violet	1 25	8 00			
POLYGONUM cuspidatum (Giant Knotweed). Grows to 12 feet high; makes a splendid group for tropical effect	1 50	10 00			
Amplexicaule (Mountain Fleece)	1 25	8 00			
PRIMULA vulgaris (English Hardy Primrose). H ½ to ¾, F 4 to 5	1 50	9 00			
Veris (Polyanthus). H ½ to ¾, F 5 to 6	1 00	6 00			
Japonica. Beautiful and desirable variety	1 75				
Acaulis	1 50				
PYRETHRUM uliginosum. A splendid fall-flowering plant with single white daisy-like flowers. H 3 to 5	1 25	8 00			
Double Varieties	2 50	18 00			
Single Varieties. The Single Pyrethrums are among the loveliest hardy flowers grown. They are splendid for beds and borders, and nothing can be finer for cutting. Their single daisy-like flowers, of all colors, are produced in the greatest profusion early in the spring and again in the fall	1 75	10 00			
RHEUM officinale (Chinese Rhubarb). The immense leaves of this noble foliage plant produce a bold and striking effect. Robinson says this is the most effective foliage plant introduced for many years	25 cts. each	\$2 50			
Collinianum. Like the above, but foliage more deeply cut; splendid	50 cts. each	5 00			
Emodi. Grows 5 feet high; wrinkled-leaved, with red veins; very effective	50 cts. each	5 00			
Tanguticum. Has fine foliage and is of rapid growth	50 cts. each	5 00			
Giganteum. A tall, vigorous variety of striking effect	3 00				
Spiciforme	3 00				
ROSEMARY. An old-fashioned plant with scented foliage	50				
RUDBECKIA speciosa. Native. One of the very best border plants in cultivation. A group of "Golden Glow" surrounded by this variety makes a splendid effect. H 2 to 3, F 7 to 9	1 25	\$8 00			
"Golden Glow." New double Rudbeckia; grows 10 to 12 feet high, and is undoubtedly one of the most effective plants in cultivation. It is becoming very popular. F 7 to 9	1 00	8 00			
Fulgida. Grows 3 to 4 feet; small yellow flowers, with black center; very effective	1 25	7 00			
Nitida	1 50	10 00			
Hirta. The "Black-Eyed Susan" of our meadows	1 25	8 00			
Laciniata. Tall variety, with graceful single yellow flowers	1 00	6 00			
Purpurea. Large crimson-maroon flowers; very distinct	1 75	12 00			
Maxima. Large bright yellow flowers; glaucous foliage	1 75	12 00			
RUTA graveolens (Rue). This is a well-known herb	50				
SAGE. The well-known herb	50				
SAPONARIA ocyroides splendens. A charming little creeping plant covered with bright, lovely rosy crimson flowers during the month of June	2 00				
SAXIFRAGA cordifolia. Large shiny foliage and large panicles of bright pink flowers. H 1, F 4 to 5	2 00				
SCABIOSA ochroleuca. Pale yellow flowers; vigorous grower; desirable. H 3 F 5 to 7	1 50	10 00			
Caucasica. Large head of pale blue flowers; one of the best hardy plants in cultivation; grows and flowers freely in any garden soil	2 00				
Caucasica alba. A white-flowered variety of the above	2 00				
SEDUM stoloniferum	1 50				
Spectabile. A fine fall-flowering plant with great heads of purple flowers. H 1½, F 9 to 10	1 50				
Acre	1 00	6 00			



Sedum spectabile

HARDY HERBACEOUS PERENNIAL PLANTS, continued



Spiraea Astilboides

SCUTELLARIA macrantha. A handsome hardy plant growing about 9 inches high, and producing an abundance of rich velvety dark blue flowers.....	Per doz.	100	\$1 00	\$6 00
SEA HOLLY. See Eryngium.				
SILENE Virginica (Indian Pink). One of the best native plants, which should be grown in every garden; brilliant crimson-scarlet flowers that are produced in the greatest profusion in May	1 25	8 00		
SILPHIUM perfoliatum. Yellow flowers. H 4 to 8, F 7	1 75	12 00		
SPIRÆA palmata. Broad cluster of the most beautiful crimson flowers, above splendid palmate foliage. H 2, F 7 to 8.....	1 75	10 00		
Palmata elegans. A lovely new variety with light pink flowers. H 2, F 7 to 8.....	1 75	12 00		
Astilboides. A splendid white variety.....	1 50			
Astilboides floribunda	1 50			
Ulmaria	1 50			
Arunacus. A grand native sort with great heads of white flowers. H 3 to 5, F 6 to 7.....	1 75	13 00		
Filipendula fl. pl. A beautiful dwarf variety with elegant fern-like foliage. H ½, F 6 to 7	1 25	8 00		
Lobata. One of the handsomest of the Spireas, with deep rosy carmine flowers. H 1½ to 3, F 6.....	1 50			
STACHYS lanata. White woolly leaves and purple flowers; useful for edging. H 1, F 7	1 00	5 00		
STATICE latifolia	1 50	10 00		
Armeria (Sea Pink)	1 25	8 00		
SWEET WILLIAM. See <i>Dianthus barbatus</i> .				
TEUCRIUM Chamædrys. Evergreen shining leaves; purple flowers; will grow on barren soils.....	1 25	2 00		
THALICTRUM aquilegifolium. All Thalictrums have handsome foliage, and this variety has quite showy flowers. H 3 to 4, F 6 to 7.....	1 25			
Adiantifolium. Beautiful foliage like maidenhair fern	1 25			

THERMOPSIS Caroliniana. Showy plant, with attractive yellow flowers	Per doz.	100	\$1 50
TIARELLA cordifolia (Foam Flower). A most charming dwarf spring-flowering plant, with beautiful white flowers and lovely foliage.....	1 25		
TRILLIUM grandiflorum	35	\$2 50	
Erectum album	35	2 50	
TRITOMA uvaria grandiflora (Red-Hot Poker). Needs protection; a striking fall-flowering plant. H 3 to 4, F 9 to 11.....	1 50	10 00	
Pfitzerii (Flame Flower, or Torch Lily). This new Tritoma is undoubtedly one of the most valuable introductions of recent years. <i>Tritoma uvaria</i> , or "Red-Hot Poker" plant, is highly prized on account of its picturesque appearance and its blooming so late in the fall after almost everything else is gone. This new variety is a great improvement in every respect. The flowers are much more refined and beautiful and are produced in the greatest profusion from early summer until late fall, coming into bloom at least two months before the older variety. It is equally desirable for garden effect or for cut-flowers.	35 cts. each..	3 00	

TUSSILAGO Farfara variegata. A handsome variegated form of Coltsfoot, with bold yellow and green foliage; fine for rockeries and shady places. Plant in the spring

VERBASCUM nigrum. Yellow flowers in long spikes; dwarf habit. 20 cts. each, \$2 per doz.	
Olympicum. Bright yellow flowers; large woolly foliage; stately. 25 cts. each, \$2.50 per doz.	
Phoeniceum. Seedlings; crimson-rose, lilac and white; large and showy. 30 cts. each, \$3 per doz.	
Pannosum. Sulphur-yellow flowers; new species, with white foliage. 35 cts. each, \$3 per doz.	



Verbascum

VERBENA venosa. A hardy Verbena; very extensively used in England for bedding. It grows about 18 inches high, but pegged down will cover the ground with heads of lovely purple-violet flowers throughout the season. Not quite hardy, except on thoroughly well-drained soils. \$1.25 per doz., \$8 per 100.	
VERONICA longifolia. Spikes of deep bluish purple flowers; very handsome. H 2, F 8 to 9	Per doz. 100
Spicata. Violet-blue flowers in long spikes; dwarf habit	\$2 00
Rupestris	1 50
Amethystina	1 25
VERONICA longifolia. Spikes of deep bluish purple flowers; very handsome. H 2, F 8 to 9	1 50
VERONICA longifolia. Spikes of deep bluish purple flowers; very handsome. H 2, F 8 to 9	1 25
VERONICA longifolia. Spikes of deep bluish purple flowers; very handsome. H 2, F 8 to 9	1 50
VERONICA longifolia. Spikes of deep bluish purple flowers; very handsome. H 2, F 8 to 9	1 25
VERONICA longifolia. Spikes of deep bluish purple flowers; very handsome. H 2, F 8 to 9	\$8 00
VERONICA longifolia. Spikes of deep bluish purple flowers; very handsome. H 2, F 8 to 9	1 25
VERONICA longifolia. Spikes of deep bluish purple flowers; very handsome. H 2, F 8 to 9	6 00
VERONICA longifolia. Spikes of deep bluish purple flowers; very handsome. H 2, F 8 to 9	1 25
VERONICA longifolia. Spikes of deep bluish purple flowers; very handsome. H 2, F 8 to 9	8 00
VERONICA longifolia. Spikes of deep bluish purple flowers; very handsome. H 2, F 8 to 9	1 50
VERONICA longifolia. Spikes of deep bluish purple flowers; very handsome. H 2, F 8 to 9	10 00
VERONICA longifolia. Spikes of deep bluish purple flowers; very handsome. H 2, F 8 to 9	1 75
VERONICA longifolia. Spikes of deep bluish purple flowers; very handsome. H 2, F 8 to 9	12 00
VERONICA longifolia. Spikes of deep bluish purple flowers; very handsome. H 2, F 8 to 9	1 75
VERONICA longifolia. Spikes of deep bluish purple flowers; very handsome. H 2, F 8 to 9	12 00
VERONICA longifolia. Spikes of deep bluish purple flowers; very handsome. H 2, F 8 to 9	3 00
VERONICA longifolia. Spikes of deep bluish purple flowers; very handsome. H 2, F 8 to 9	18 00
VERONICA longifolia. Spikes of deep bluish purple flowers; very handsome. H 2, F 8 to 9	5 00
VERONICA longifolia. Spikes of deep bluish purple flowers; very handsome. H 2, F 8 to 9	12 00



Specimen *Rhus Cotinus* (From English "Country Life")

Novelties in Shrubs

(SHIPPED FROM STATION NEAR PITTSBURG)

Of the following shrubs, those marked with an asterisk (*) have been fully tested in this country, and I have seen them and can vouch for the descriptions. The others come from reputable foreign sources, and the descriptions of introducers are given. The plants sent out of new varieties of shrubs are always much smaller than those of old sorts.

- CRATÆGUS Carrieri.** Beautiful variety of thorn, with large, deep green, glossy foliage, remaining on the tree until December. Gives a quantity of large white flowers, turning rosy afterwards. The fruits are small scarlet Medlars, eatable, having the taste of an apple, and being the size of a large cherry. The nice foliage and quantity of fruits make it a remarkable small tree or shrub. 40 cts. each.
- CYDONIA Japonica Columbia.** The fruit of this new Japan Quince is said to be edible, measuring 8 to 10 inches in circumference; greenish yellow, very fragrant. \$1 each.
- Japonica Maulei superba** (Japan Quince). Large, bright red flowers, darker than *C. Maulei*; vigorous, blooms abundantly. 75 cts. each.
- ***CORNUS brachypoda variegata.** The most striking variegated shrub in cultivation; large leaf of grand effect. \$1 each.
- ***DEUTZIA crenata candidissima.** This is not new, but it is one of the most beautiful of all the Deutzias, and is very scarce. It is a handsome shrub and should be in every collection. 20 cts. each, \$2 per dozen.
- Hybrida Lemoinei.** Beautiful variety, Hybrid of *Deutzia gracilis* (*D. parviflora*); blooms early, regularly; the branches are entirely covered with erect panicles, bearing 15 to 25 pure white and well-opened flowers, of a new aspect in Deutzias. 25 cts. each, \$2.50 per dozen.
- Parviflora.** Small shrub, reaching hardly 5 feet in height; branches straight; leaves elliptical, dentated and reticulated with dark green; gives a profusion of beautiful white flowers; fine novelty. 25 cts. each.
- Corymbiflora.** A new variety with thin branches and large dark green leaves; flowers in May and June; snow-white, in terminal clusters; sometimes flowering in August and September. 35 cts. each.
- FORSYTHIA Fortunei variegata aurea.** Fine novelty; leaves with a large golden yellow margin. Requires to be planted in a sunny place; very vigorous and as free-flowering as the type. 25 cts. each.
- HAMAMELIS Japonica Zuccariniana** (Japanese Witch Hazel). Leaves dark green; flowers lemon-yellow in axillary clusters. Very curious on account of its being the only shrub that will produce flowers outdoors in winter time in this country. \$1 each.
- MALUS floribunda Scheideckerii** (Crab Apple). This new Crab Apple is a seedling of *Malus floribunda*, which I have always considered the most ornamental flowering small tree in cultivation. This new variety is said to be a great improvement. 75 cts. each.
- PHILADELPHUS Falconeri.** Introduced from China or Japan. Hardy, attaining 9 feet in height; branches thin; leaves small, lanceolate; blooms in small panicles at the end of axillary branches, flowers formed of four sharp-pointed petals, pure white. 35 cts. each.
- Lemoinei** (Mock Orange). A fine new sort of *P. microphyllus*; very large flowers, highly scented. 50 cts. each.
- Lemoinei Avalanche.** Branches attaining 5 to 6 feet, bent by weight of flowers; flowers very large, covering the branches; sweet-scented; a superb new sort. 35 cts. each.
- Lemoinei erectus.** Forming an erect bush; the branches are entirely covered with little flowers of the purest white and very fragrant. 30 cts. each.
- Lemoinei, "Mont Blanc."** Grows 5 feet high; erect branches entirely covered with large fragrant flowers. 50 cts. each.
- "Silver Ball."** Flowers large; double, sweet-scented; fine. 30 cts. each, \$3 per dozen.
- Pekinensis.** Lately introduced from the mountains of Peking. 40 cts. each.

NOVELTIES IN SHRUBS, continued

- ***RHUS Cotinus atropurpurea.** This is a marked improvement on the well-known Purple Fringe, which I have always considered one of the handsomest shrubs in cultivation. This shrub makes a splendid specimen. The introducer describes the plumes as scarlet, which is hardly true, but they are much deeper in color than those of the old variety. (See illustration, preceding page, which shows what a magnificent ornament to the lawn it is.) 75 cts. each.
- RUBUS sorbifolius.** A Japanese Raspberry. Hardy, producing large, handsome, luscious fruit, resembling in size and form the strawberry; red in color, and of sprightly subacid pleasant flavor. Large white flowers, fragrant. 25 cts. each.
- Xanthocarpus.** Raspberry introduced from China. Forms a dwarf erect bush, 1 foot high; foliage ornamental; fruit yellow, acidulous flavor. 25 cts. each.
- ***SAMBUCUS (Elder) nigra flora rosea plena.** Very vigorous shrub, with double-rose flowers; awarded a silver medal at the Antwerp Exhibition. 25 cts. each.

- SAMBUCUS racemosa tenuifolia.** Beautiful hardy variety, with fine deeply cut green foliage. The plant in its aspect much resembles some varieties of the Japanese maple, and may replace them in countries where these nice shrubs do not thrive well. 75 cts. each.
- ***VIBURNUM dilatatum.** Not new, but very scarce; one of the best of the Viburnums; grows 8 to 9 feet high; small white flowers in June. The fruit is beautiful orange-red and ripens in September. \$1 each.
- ***WEIGELA Eva Rathke.** A new everblooming Weigela of great beauty; vigorous, and flowers all summer; flowers large, crimson-red. A great acquisition that will become immensely popular. 25c. each, \$2.50 per doz.; stronger plants, 40c. each.
- Conquete.** Flowers enormous. The largest flowered variety, deep rose, measuring 1½ to 2 inches across. 35 cts. each.
- Pracox.** Japanese sort; vigorous; branches erect; flowers carmine-rose, throat marked with yellow stripes; blooms 3 to 4 weeks before the other sort. 75 cts. each.

A Few Shrubs of Exceptional Merit

All of the shrubs offered in the general list that follows are desirable, and have their special uses. Some of them are as fine as any described below, but are too well known to need special description; but no grounds are so small that should not include all of the following:

- BERBERIS Thunbergii.** The nurserymen all unite in praising this splendid shrub, and it deserves all the praise it gets, but the price has been kept pretty high. I have a large stock grown and offer it at about half current prices, so that my customers can afford to plant it freely. It has every good quality—beautiful habit, fine foliage, free-flowering qualities—but its greatest charm is the great quantities of crimson berries which it produces in the summer, and which remain on the bushes all winter, making it very effective in the winter landscape. It is also fine for cutting for house decoration, almost equal to the holly, which cannot be grown very well north of Washington or east of Philadelphia. This Berberis makes a splendid untrimmed hedge, and my low prices make it available for that purpose. 20 cts. each, \$2 per doz., \$13 per 100; small plants, \$6 per 100.
- CEPHALANTHUS occidentalis.** This splendid native shrub is almost unknown and has never been pushed by the nurserymen, although scores of inferior things have been praised to the sky and sold by the thousands. It is really unique, there being no other shrub at all like it. The foliage is luxuriant, bold and finely colored, and the white flowers, which are produced freely in July, when almost no other shrub is in bloom, are remarkable, being perfectly round in shape and about 2 inches in diameter. They are sweet-scented. This is an excellent shrub for general planting that I cannot commend too highly, and, like most native shrubs, is of the easiest culture. 20 cts. each, \$2 per doz., \$12 per 100.

- EXOCHORDA grandiflora (Pearl Bush).** This is one of the finest shrubs of its season (May) and when in bloom is covered with its lovely white flowers. This shrub has always been scarce and high-priced, but I have secured a large stock which I can offer at a low price. When planted fully two-thirds of its top should be cut off. 20 cts. each, \$2 per doz., \$14 per 100.

- MAHONIA aquifolium.** A splendid evergreen shrub, which shows a variety of coloring in its foliage at all seasons of the year and produces a great display of bright yellow flowers early in the spring. At times the foliage is as brilliant and as rich in color as autumn leaves. It is not often used for the purpose, but it makes a splendid hedge. A good example of this can be seen on Judge Mellon's grounds in this city. This shrub should be planted in the spring. 20 cts. each, \$2 per doz., \$12 per 100.

Speaking of shrubs, Miss Jekyll in her book, *Wood and Garden*, says: "What a precious thing this fine old Mahonia is. What should we do in winter without its vigorous masses of grand foliage in garden and shrubbery, to say nothing of its use indoors?" * * * When one reflects that *Mahonia Aquifolium* is individually one of the handsomest of small shrubs, that it is at

its very best in midwinter, that every leaf is a marvel of beautiful drawing and construction, and that its ruddy winter coloring is a joy to see; and further, when one remembers that in the spring the whole picture changes—that the polished leaves are green again and the bushes are full of tufted masses of brilliant yellow bloom and fuller of bee-music than any other plant then in flower. * * * * It is the only hardy shrub I can think of that is in one or other of its varied forms of beauty throughout the year."

- RHUS Cotinus.** This is a common old shrub, that almost everybody knows under the name of "Purple Fringe" or "Smoke Tree," but it is almost never seen in perfection on account of being ruined by pruning. In good soil, and allowed to develop naturally, it in time makes one of the finest things imaginable, which is well shown by the illustration taken from the *English Country Life*. 25 cts. each, \$2.50 per doz.

- RUBUS odorata.** This is the Flowering Raspberry, which grows wild by the tens of thousands in many parts of this country. I want to call especial attention to it, for nothing can be better for covering steep and partially shaded banks. It does best on moist north hillsides. It makes masses of most pleasing and effective foliage, and its large purplish red flowers are produced all summer. 20c. each, \$1.25 per doz., \$8 per 100.

Since the above was written I have tested the shrub in my experimental grounds, and have found it one of the most beautiful shrubs in my collection and one of the easiest culture. If it never bloomed its foliage would make it entirely satisfactory. It was planted in full exposure to the sun, in ordinary garden soil.



Berberis Thunbergii

ORNAMENTAL FLOWERING SHRUBS, continued

	Each	Per doz.	100
CYDONIA Japonica (Japan Quince). Brilliant red. 18 to 30 inches.....	\$0 20	\$1 50	\$10 00
Japonica candida . White-flowered.....	20	2 00	
Japonica Maulei . Orange-colored flowers, very distinct shade.....	25	2 50	
CYTISUS Laburnum (Laburnum or "Golden Chain").....	30	2 50	
DAPHNE Mezereum . White; 2 feet.....	30	3 00	
DESMODIUM penduliflorum . An exceedingly graceful shrub-like plant, covered with flowers in summer time when little else is in bloom; strikingly beautiful.....	25	2 75	
Japonicum . White.....	25	2 50	
DEUTZIA Candidissima, Crenata fl. pl., and Pride of Rochester	20	2 00	12 00
Gracilis . Transplanted; nice clumps.....	15	1 50	10 00
Scabra	20	1 75	
Wellsii	25	2 50	
DIERVILLIA Sessilifolia	25	2 50	
DIMORPHANTHUS Mandchuricus . A very ornamental shrub, with long multifid leaves, imparting a decidedly subtropical aspect to a group; 2 to 3 feet.....	40	3 00	
DIRCA palustris (Leatherwood). 12 to 15 in.....	30	3 00	
ELÆAGNUS angustifolius (Silver Thorn).....	20	1 50	
Longipes . A new and handsome shrub with edible fruit. True variety.....	40	4 25	
Parvifolius (Silver Thorn).....	30	3 00	
Umbellatus	20	1 50	
EUONYMUS atropurpureus (American Burning Bush).....	25	2 50	
Europæus (European Burning Bush).....	25	2 25	
EXOCHORDA Alberti	20	3 00	
Grandiflora . A rare Chinese shrub, with pure white flowers.....	20	2 00	14 00
FONTANESIA Filariaefolia	20	1 75	
FORSYTHIA Fortunei viridissima . 2 to 3 feet.....	20	1 75	12 00
Suspensa . 30 to 36 inches.....	20	1 50	10 00
GENISTA scoparia (Scotch Broom). 12 to 18 inches.....	20	1 50	8 00
HALESIA diptera	30	3 00	
Tetraptera (Silver Bell). This variety is one of the most beautiful flowering shrubs in cultivation.....	20	2 00	
HAMAMELIS Virginica (Witch Hazel). Blooms in late fall and early winter.....	30	3 00	
HIPPOPHAË rhamnoides (Sea Buckthorn).....	15	1 00	
HYDRANGEA arborescens	15	1 50	
Paniculata . Distinct from <i>P. grandiflora</i> . A very striking and elegant shrub.....	20	2 00	
Paniculata grandiflora . The well-known hardy Hydrangea.....	20	2 00	
Quercifolia (Oak-Leaved Hydrangea). Very handsome.....	50	5 00	
Radiata . Handsome native variety; fine for naturalizing.....	20	1 75	
HYPERICUM Ascyron	25	2 50	
Calycinum	20	2 00	
Densiflorum	20	2 00	
Moserianum . Extremely beautiful and desirable; large golden yellow flowers.....	20	2 00	12 00
Patulum	25	2 00	12 00
Prolificum	20	2 00	13 00
ILEX verticillata (Deciduous Holly). Valuable for its brilliant scarlet berries in fall and winter.....	25	2 50	
ITEA Virginica	20	1 75	
LESPEDEZA bicolor . 18 to 24 inches.....	30	3 25	
LILAC, Common Purple . 1 to 2½ feet.....	15	1 50	8 00
2½ to 3 feet.....	20	2 00	12 00
Common White . 1½ to 2 feet.....	15	1 50	10 00
2½ to 3 feet.....	20	2 00	13 00
Persian . White and purple; small flowers. 3 to 4 feet.....	25	2 50	16 00

NEW VARIETIES

Strong, 2-year budded plants (described below). Price, except where otherwise noted, 25 cts. each, \$2.50 per doz., \$17 per 100. For prices of named Lilacs, grown on their own roots, see page 14.

Bertha Dammann. Immense trusses of pure white flowers; very profuse bloomer. 2 to 3 feet. 35 cts each.

LILAC, Flore pleno. One of the oldest of the double Lilacs, and an excellent kind. Simply a double *Vulgaris*. Large and fine. 2 to 3 ft.
Marie Legray. The best white Lilac in cultivation.
Madam Lemoine. Large spike of pure white, double flowers; decidedly one of the finest varieties of recent introduction. 2 to 3 feet. 35 cts. each.
Souvenir de la Spath. The most distinct and beautiful variety in the collection. Trusses immense; very compact; florets very large, deep purplish red. Growth vigorous. 2 to 3 feet. 35 cts. each, \$3.50 per doz.

	Each	Per doz.	100
LILAC Josikea (<i>Chionanthus</i> - Leaved Lilac). A very distinct and beautiful species.....	\$0 30	\$3 00	
Japonica . A new and unique species from Japan, attaining the size of a tree, with large panicles of white flowers; foliage very large, thick and deep green color.....	25	2 50	\$25 00

Villosa. Another new Japanese species, with foliage resembling the White Fringe (*Chionanthus*), and producing immense panicles of white flowers late in the season..... 25 2 50

Emodi. A wild species, with large shining leaves; whitish flowers in June..... 25 2 50

Saugeana. One of the Persian Lilacs; reddish flowers..... 20 2 00

LONICERA Morrowii (Upright Honeysuckles). One of the most desirable shrubs in cultivation, both on account of its flowers and fruit, which are borne in the greatest abundance.... 20 2 00 13 00

Ruprechtiana..... 20 2 00

Bella candida, rosea and albida. See Novelties in Shrubs, page 18..... 50 5 00

Grandiflora. Large red bloom. 2 to 3 feet..... 20 2 00 13 00

Tatarica. Pink flowers. 2 to 3 feet..... 20 2 00 13 00

Tatarica alba. White flowers. 2 to 3 feet.... 20 2 00 13 00

Xylosteum (Fly Honeysuckle). 3 to 4 feet..... 20 2 00

Frangantissima. A very early sweet-scented species..... 25 2 50

LIMONIA trifoliata (Hardy Orange)..... 15 1 50

MYRICA cerifera (Wax Myrtle, Bayberry, or Candleberry). 12 to 18 inches..... 20 2 00

PHILADELPHUS aureus (*Syringa*, or Mock Orange). Golden foliage..... 20 1 75

Zeyheri..... 20 1 75

Coronarius. 2 to 3 feet..... 20 2 00

Dianthæflora plena. Double-flowering. 2 to 3 feet..... 20 2 00

Grandiflorus..... 20 2 00

Nepalensis variegata..... 20 2 00

PRIVET, California. The California Privet is unsurpassed for hedging, being hardy, free from disease, bears shearing well, grows rapidly and is very attractive; special prices quoted by the thousand. 3 to 4 feet; unusually fine..... 15 1 50 10 00

2½ to 3 feet; 2-year branched..... 12 1 25 8 00

12 to 15 inches; 1-year..... 10 60 3 00

Variegated-Leaved. An elegant new form, standing the sun well and always very distinct. 3 to 4 feet..... 25 2 50

Ibota. 2½ to 3 feet..... 20 2 00

Chinese. A rare variety with beautiful foliage. 25 2 50

Common. Desirable for hedging and hardier than California Privet..... 10 1 00 6 00

Ligustrum Media. A new variety of beautiful habit; fruits immensely..... 25 2 50

POTENTILLA fruticosa. 2 to 3 feet..... 25 2 50 13 00

PRUNUS sinensis rubra. A dwarf Chinese Plum of great beauty. Double red flowers..... 25 2 50

Maritima (Beach Plum). Dwarf bush plum which makes an extremely ornamental shrub on account of its flowers as well as its fruit, which is produced on bushes when only two feet high. The fruit is edible and makes an excellent preserve..... 25 2 50

Pissardi (Purple-leaved Plum). Desirable on account of its rich purple foliage..... 20 2 00

Triloba. A desirable flowering plum; very beautiful..... 25 2 50

PYRUS arbutifolia (Choke Berry). A native shrub of great beauty and easy culture. Covered with white flowers early in spring, followed by bright red berries which last all winter..... 20 2 00

RHUS copallina (Shining-leaved Sumac)..... 35 3 50

Cotinus (Purple Fringe)..... 25 2 50

Clabra laciniata (Cut-leaved Sumac)..... 25 2 50

ORNAMENTAL FLOWERING SHRUBS, continued

	Each	Per doz.	100
RHUS typhina (Common Sumac).....	\$0 20	\$1 50	\$10 00
Osbecki	30	3 00	
Aromatica	40		
RHODOTYPUS kerrioides	20	2 00	
RIBES aureum (Missouri Currant).....	20	2 00	13 00
Gordonianum	20	2 00	
ROBINIA hispida (Rose-Flowered Acacia). Ex- tremely free-flowering and attractive.....	20	2 00	
RUBUS odorata . (See special description, page 37).....	20	1 25	8 00
Fruticosa	40		
SAMBUCUS Canadensis (Common Elderberry). Very striking when planted in rich soil.....	20	1 50	
Canadensis aurea (Golden-leaved Elderberry). ..	20	2 00	13 00
Laciniata (Cut-leaved Elderberry)	20	2 00	
Pubens . This rare variety has bright red fruit in the spring, when the common elderberry is in bloom	25	2 50	
SPIRÆA Reevesi, Reevesi fl. pl., Billardi and Salicifolia	20	1 75	12 00
Opulifolia aurea . 2 to 3 feet.....	20	2 00	
Tomentosa . A showy native species, with pink panicles of flowers. 2 to 3 feet.....	20	1 75	10 00
Arietifolia	20	2 00	
Thunbergii	20	2 00	13 00
Bumalda . A beautiful dwarf variety, in flower all summer.....	25	2 50	13 00
Prunifolia	20	1 75	
Van Houttei . A dwarf and very graceful vari- ety. One of the best, by many people considered the most satisfactory shrub in cultivation	20	1 75	12 00
Lindleyana . A splendid variety, both on account of its foliage and flowers. Very picturesque and striking.....	25	2 50	15 00
Anthony Waterer . A beautiful novelty introduced lately into our collections. The <i>Garden and Forest</i> thus alludes to it in a recent issue: "This is a seedling of that variety of <i>Spiræa Japonica</i> which is known in gardens as <i>S. Bumalda</i> , and which is distin- guished by its dwarf, compact habit, its persistent flowering, and bright red flowers. <i>Spiræa Anthony Waterer</i> originated in the Knaphill Nurseries at Woking, in England a few years ago, and differs from its parent in the deeper, brighter and more intense color of the flowers. As it begins to flower freely when only a few inches high, and continues to produce its large, flat corymbs from July until frost appears, this shrub promises to be a capital addition to the rather short list of autumn-flowering hardy shrubs." It has received a first-class certificate from the "Royal Horti- cultural Society." Two-year-old plants, 25 cts. each, \$2.25 per doz., \$17 per 100.			



Rhododendron Catawbiense

	Each	Per doz.	100
SNOWBERRY . All the Snowberries are very desirable in the shade or under trees where nothing else will grow. They are covered with white or red berries in fall or winter. White-Fruited . 2 to 3 feet	\$0 20	\$1 50	\$10 00
Red-Fruited . 2 to 3 feet	20	1 50	10 00
Variegated . Beautiful variegated foliage.....	20	1 75	12 00
STAPHYLEA Colchica . Extremely sweet-scented and free-flowering shrub; very desirable.....	30	3 00	
STYRAX Japonica . This rare gem is one of the most desirable shrubs known. When in bloom it is literally covered with cream-white bells. 4 to 5 feet	30	3 00	20 00
STEPHANANDRA flexuosa . A very graceful shrub with deeply cut fern-like foliage.....	20	2 00	
TAMARIX Gallica (T. Chinensis) . 2 to 3 feet..	20	2 00	
Tetrandra (T. Africana) . Very attractive speci- es. 2 to 3 feet.....	20	2 00	
Indica	20	2 00	
Japonica	20	1 50	
VIBURNUM Lantana	25	2 50	
Opulus sterilis (Snowball).....	20	2 00	13 00
Opulus nana . Very dwarf.....	15	1 50	
Oxycoccus (Cranberry Tree).....	30	3 00	20 00
Plicatum (Japan Snowball). One of the choicest shrubs. 18 to 24 inches	30	3 00	20 00
Dilatatum	1 00		
Tomentosum . Rare and choice	40		
Acerifolium	30	3 00	
Dantatum . A most beautiful and satisfactory shrub	35	3 50	
Sieboldi (Reticulatum)	50	5 00	
Macrocephalum . A rare variety of great beauty. ..	75		
VITEX Agnus-castus (Chaste Shrub), Blue	20	1 50	
White	20	1 50	
WEIGELA candida . We are now prepared to supply this charming white Weigela in large lots. Decidedly the most desirable of its color. ..	20	2 00	
Rosea . A heavy stock of fine plants	20	2 00	
Rosea nana variegata (Variegated-Leaved). 1 to 3 feet	20	2 00	
Othello . Dark rose.....	25	2 50	
Floribunda . Crimson	25	2 50	
Abel Carriere . Dark rose flowers, fine foliage..	20	2 00	
XANTHOCERAS sorbifolia . New and beauti- ful. 8 to 10 inches	35	3 50	
XANTHORRHIZA apifolia . 8 to 12 inches	25	2 50	

EVERGREEN SHRUBS

All Evergreen Shrubs should be planted in the spring.

AUCUBA Japonica	\$0 25	\$2 50	
BERBERIS Neuberti . Holly-shaped leaves; very handsome.....	20	2 00	
Dulcis . Dwarf and neat	20	2 00	
BUXUS Chinensis latifolia	60	6 00	
Chinensis longifolia . 1½ to 2½ feet	60	6 00	
2 to 2½ feet.....	85	8 50	
Chinensis rotundifolia	30	3 00	
18 to 24 inches	60	6 00	
Common Tree Box . 18 to 24 inches.....	70	7 00	
DAPHNE cneorum major . A little trailing ever- green, with lovely pink flowers. As dainty as the trailing arbutus.....	50	5 00	
EUONYMUS Japonica	20	2 00	
ILEX opaca (American Holly)	35	3 50	25 00
Crenata . A dwarf Holly of beautiful habit and foliage; perfectly hardy, and covered with black berries in the winter	85	9 00	
KALMIA latifolia . Known as the Small-Leaved Mountain Laurel. One of the most beautiful flowering shrubs in cultivation. Nice, small nursery-grown plants. 12 to 14 inches.....	50	5 00	
LEUCOTHOË Catesbæi . Extremely graceful and beautiful evergreen shrub, with white, bell- shaped flowers.....	25	2 50	
MAHONIA aquifolium	20	2 00	\$12 00
Japonica	30	3 00	16 00
RHODODENDRON maximum . Our well-known Mountain Rhododendron, blooming in July. Nice nursery-grown plants	50	5 00	
Catawbiense . The wild Rhododendron of the southern mountains; very desirable. Fine nursery-grown plants	50	5 00	

Ornamental Deciduous Trees

The following list of trees is selected from the best nurseries in the United States. Orders will be shipped from the nearest nursery that can supply stock ordered, so as to save freight charges and secure quickest possible delivery; where stock is ordered in considerable variety, it is sometimes shipped from two or more nurseries to secure trees of the best qualities. I always endeavor to secure the best stock in the market for my customers. The prices quoted are for trees of the most suitable size for transplanting; extra-large trees of many varieties can be supplied, but are not recommended. If quick results are desired they can be had by taking small- and medium-sized, but perfectly vigorous and healthy trees; for instance, dig a hole 4 feet deep and 4 feet in diameter for each tree, and fill with all good surface soil, mixed with one-fourth its bulk of rotted stable manure.

It costs considerable to plant trees in this manner, but the results justify the expense, and people often pay from \$10 to \$50 each for larger trees, which always fail, generally dying outright within three years, and never making vigorous, healthy trees. Some kinds of trees may be safely planted much larger than others. Magnolias, Beeches, Tulip Trees and White-Leaved Linden are difficult to transplant, and small-sized trees of these should always be selected. Some varieties should always be planted in the fall, others in the spring, and I will be glad to advise my customers on these and other points in regard to planting.

Lowest net prices will be quoted for trees by the 100 and 1,000 on application. Specially desirable trees are marked with asterisk (*).

	Each	Per doz.
AILANTHUS glandulosa. Female trees, which are almost free from disagreeable odor.....	\$0 75	\$7 00
ALDER, Cut-Leaved	75	8 00
European	75	8 00
*ANDROMEDA arborea (Sorrel Tree). A scarce and extremely beautiful flowering tree. 2½ to 3 feet..	50	5 00
ASH, American White	65	6 50
English	60	6 00
BALM OF GILEAD. See Poplars.		
BEECH. The Beeches are the noblest of trees, but are of slow growth and difficult to transplant. Small trees should always be selected and well pruned when planted.		
American	80	8 00
*English	70	7 00
*Fern-Leaved	90	9 00
*Cut-Leaved	1 00	10 00
*Purple-Leaved	75	8 00
*Weeping	1 75	12 00
*BIRCH, European White	75	8 00
*Cut-Leaved Weeping	6 00	10 00
Purple	1 00	10 00
Paper	75	7 50
Red	1 00	10 00
Sweet. 3 to 4 feet	40	4 00
Plant Birches in the spring.		
BUTTONWOOD. See Sycamore.		
CATALPA Bungei (Indian Bean or Cigar Tree). Standard	1 25	12 00
Bungei. Grafted at the ground	50	5 00
Japanese	50	5 00
Speciosa. Our native variety	50	5 00
CERCIDIPHYLLUM Japonicum	85	8 00
CERCIS Canadensis (American Judas Tree).....	20	2 00
Japonica (Japanese Judas Tree)	30	3 00
CHERRY, European Bird	40	4 00
American Wild	60	6 00
Double-Flowered White	80	8 00
Double-Flowered Pink	75	8 00
Rose-Flowered (Weeping Japanese). Unique and beautiful flowering tree that should be in every collection	2 00	
CLADRASTIS tinctoria (<i>Virgilia lutea</i>)	90	9 00
CRAB APPLE. The ornamental Crab Apples are undoubtedly the most beautiful small flowering trees in cultivation; even more beautiful than the popular Magnolias. They are of the easiest culture, hardy, and bloom when quite small.		
*Parkman's (<i>Pyrus Parkmani</i>)	75	7 50
*Bechtel's New Double-Flowered	75	8 00
*Japanese (<i>Pyrus Toringo</i>). Extremely beautiful..	60	6 00
*Common Wild (<i>Pyrus coronaria</i>)	30	3 00
Double White (<i>Pyrus spectabilis</i>).....	60	6 00
Malus Flexilis. A splendid sort, with red fruit....	75	7 50
Floribunda. Single-flowered; pink; one of the most beautiful	75	7 50
Kaido. Flowers single, white and pink, followed by small fruit in clusters; very ornamental.....	25	3 00
CYPRESS, Deciduous	50	5 00
*DOGWOOD, White-Flowering	50	5 00
*Red-Flowering	75	8 00
Weeping	75	8 00
*ELM, American	1 00	10 00
European	80	8 00
Camperdown Weeping	75	
*HONEY LOCUST, American	60	6 00



Double-Flowered White Cherry

	Each	Per doz.
*HORSE CHESTNUT, American or Buckeye	\$75	\$7 50
White-Flowering	1 00	10 00
Double White	1 00	10 00
Double Red	1 00	10 00
KENTUCKY COFFEE TREE (<i>Gymnocladus Canadensis</i>).....	90	9 00
KŒLREUTERIA paniculata	75	8 00
LARCH, European	40	4 50
LINDEN, American	80	8 00
*White or Silver-Leaved. A superb tree	1 50	15 00
European	75	8 00
Golden-Barked	80	8 00
Large-Leaved (<i>Tilia platyphylla</i>)	75	7 50
White-Leaved Weeping. A splendid pendulous tree	1 50	15 00
LIQUIDAMBAR styraciflua (Sweet Gum). 4 to 5 feet	75	7 50
MAGNOLIA acuminata (Cucumber Tree)	50	5 00
Clauca (Sweet Bay).....	50	5 00
Macrophylla (Giant-Flowered Magnolia). Flowers 12 to 15 inches across	75	7 50
Tripetala (Umbrella Tree)	40	4 00
CHINESE AND JAPANESE MAGNOLIAS		
MAGNOLIA conspicua. A superb large-flowered white Magnolia; 2 to 3 feet, in pots.....	1 50	15 00
Purpurea (Obovata). Purple; small.....	30	3 00
*Soulangeana. White; pink center; a splendid sort that is literally covered with large flowers early in the spring. 50 cts., 75 cts., \$1, \$1.50 and \$2 each, according to size.		
*Stellata (Halleana). A dwarf white variety of exquisite beauty; 12 to 18 inches, in pots	1 25	12 00
18 to 24 inches, in pots.....	1 50	
*Hypoleuca. A choice Japanese variety	2 50	
Parviflora (Watsoni). A very scarce and extremely lovely Japanese variety.....	2 50	

ORNAMENTAL DECIDUOUS TREES, continued

	Each	Per doz.	Each	Per doz.
MAGNOLIA Lennel. A beautiful sort, with large purple flowers	\$1 75			
Kobus. A Japanese white variety	50	\$5 00		
Gracilis. Purple flowers	25	2 50		
Magnolias should be planted in the spring.				
MAPLE, Ash-Leaved (Box Elder)	75	7 50		
Colchicum rubrum	75	8 00		
European Cork	75	7 50		
English	70	7 00		
Norway	1 00	10 00		
Purple Norway	1 25	13 00		
Schwedler's Purple	1 25	13 00		
Silver-Leaved. (Water or soft)	50	5 00		
Striped Bark (<i>Acer Pennsylvanicum</i>)	65	6 50		
Sugar or Rock	75	8 00		
Sycamore	90	9 00		
Weir's Cut-Leaved	60	6 00		
Red or Scarlet	1 00	10 00		
Small trees	60	6 00		
Mountain (<i>Acer spicatum</i>). Small	35	3 50		
Tartarian. Small	50	5 00		
MOUNTAIN ASH, European	30	3 00		
Cut-Leaved	40	4 00		
Weeping	60	6 00		
MULBERRY, New American	60	6 00		
Downing's	50	5 00		
Russian	40	4 00		
White	40	4 00		
Teas, Weeping	80	8 00		
NUTS, Almonds. Hard or soft shell	30	3 00		
Chestnut, American	70	7 00		
* Japan	1 00	10 00		
Spanish	50	5 00		
* Paragon	1 00	10 00		
* Numbo	1 00	10 00		
* Hickory (Shellbark)	50	5 00		
Walnut, Black	40	4 00		
English	75	7 50		
Japanese	60	6 00		
NYSSA multiflora (Sour Gum)	50	5 00		
OAK. The planting of Oaks for ornament has been done but little on account of their supposed slow growth. They grow quite as rapidly as other hard-wood trees, and the Pin Oak is of very rapid growth, and one of the finest trees in cultivation.				
*OAK, White. 3 to 4 feet			\$1 25	
Turkey. 5 feet			2 00	
*Scarlet. A grand tree, with splendid coloring in fall; 8 to 9 feet			1 50	
Laurel-Leaved. 3 to 4 feet			1 25	\$13 00
Pin (<i>Quercus palustris</i>). One of the very finest trees for avenue or lawn planting, and of very rapid growth. The great demand for this tree has made it very scarce; 5 to 6 feet			1 25	13 00
6 to 7 feet			1 50	16 00
7 to 8 feet			1 75	18 00
9 to 10 feet			2 00	20 00
10 to 11 feet			2 50	25 00
10 to 11 feet; low-branched specimens			5 00	
Golden			1 50	16 00
English			1 60	
Red. 6 to 7 feet			1 60	
OSTRYA Virginica (Iron Wood)			50	4 00
OSAGE ORANGE. 5 to 6 feet			50	5 00
*PAULOWNIA imperialis (Empress Tree)			50	5 00
PEACH, Blood-Leaved			25	2 50
Double-Flowering. Pink, white and crimson			30	3 00
Persica magnifica. A new variety received from Europe. It is one of the most beautiful small flowering trees in cultivation			75	
PERSIMMON, American			50	5 00
PHOTINIA villosa. A very ornamental tree covered with red berries in fall and winter			60	5 50
PLANE. See Sycamore.				
PLUM, Purple-Leaved (<i>Prunus Pissardi</i>)			25	2 50
POPLAR, Carolina			35	3 50
Lymbard			40	4 00
Pyramidal (<i>Bolleana</i>)			75	8 00
Golden			35	3 50
Silver			40	4 00
Balsam (Balm of Gilead)			75	
SALISBURIA adiantifolia (Ginkgo or Maidenhair Tree)			75	8 00
SASSAFRAS. A small native tree; seldom used but extremely desirable for its foliage			50	5 50
SOPHORA Japonica			35	3 50
SYCAMORE, Oriental. The Oriental Sycamore is extensively used in Europe for street planting.			1 00	11 00

THORNS. See Hawthorn, under head of Hardy Shrubs.				
* TULIP TREE (<i>Liriodendron tulipifera</i>)			50	5 00
WILLOW, American Weeping.			40	4 00
Kilmarnock			40	4 00
White			10	1 00
Laurel-Leaved. Very handsome			30	3 00
Rosemary			50	5 00
Golden-Barked			25	2 50
Flame-Colored			20	2 00
YELLOW WOOD. See Cladrastis.				

EVERGREENS

List of Evergreens is published in spring catalogue. They shall always be planted in the spring.

Azalea Indica

(For greenhouse culture)

Buyers desiring Azaleas in quantity or large specimens should write for special prices.

	Per doz.	100
Strong plants, with heads 9 to 12 inches across	\$6 50	\$40 00
10 to 12 inches across	7 50	47 50
12 to 15 inches across	11 00	75 00
18 to 24 inches across, \$3.50 each.		

These prices hold good until October 1. Large specimen plants from \$3 to \$10 each and upwards.

Delivery will be made early in November, as soon as importations are received.

I can supply all the best sorts. Azaleas furnished by me have given unqualified satisfaction.



Azalea Indica



Hedged Garden of Hardy Plants (From English "Country Life")

ORNAMENTAL HEDGES

Hedges can be used to advantage on all suburban and country places, large or small. Where protection against cattle is not needed a well-kept hedge is far more beautiful than the most costly wall or fence. At Newport the most beautiful summer resort in America, hedges are very popular and are used more than both walls and fences. I have made arrangements for supplying all the best varieties of hedge plants at extremely low prices.

TRIMMED HEDGES

- | | |
|---|---------|
| | Per 100 |
| CRATÆUS Oxyacantha (English Hawthorn). This is the thorn that is used all over England for field and farm hedges. It is very attractive, being covered with white, sweet-scented flowers in the spring, and bright scarlet berries in the fall and winter. Nice plants, 24 to 48 inches high..... | \$12 00 |
| Pyracantha Lalandi (Improved Evergreen Thorn). I think the most beautiful hedge I ever saw in America is one of this thorn, on the grounds of Mr. Winthrop, at Newport, R. I. The foliage is dense and of a beautiful glossy green, which turns in the winter to a rich bronze. In the fall and winter this thorn is covered with small bright scarlet berries, which make it extremely attractive. Nice stocky plants... | 15 00 |
| HEMLOCK SPRUCE. This undoubtedly makes the most beautiful evergreen hedge that can be grown in this climate. It is perfectly hardy, a fine rich green in color, which color it retains all through the winter, and no matter how hard it is trimmed, the peculiar feathery appearance of its young growth always gives it a graceful appearance. Plant 18 to 24 inches apart. Nice young plants, 8 to 15 in. high. | 15 00 |
| 12 to 18 inches..... | 20 00 |
| 18 to 24 inches, twice transplanted..... | 30 00 |
| MAHONIA Aquifolium. This, which is one of the most beautiful evergreen shrubs, makes a splendid hedge. It is covered with showy yellow flowers in the spring, but its greatest beauty is its foliage, which is fine at all seasons of the year, but especially so in the fall and winter, when it turns to the finest bronze and crimson. It is especially desirable as a trimmed or untrimmed hedge. Plant 18 inches apart. I offer a splendid stock of plants, 12 to 18 inches high, at less than it can be bought for at wholesale..... | 12 00 |
| PRIVET, California. This is the most popular hedge plant in this country, which is explained by its handsome appearance, rapid growth and low price. A fine hedge, five feet high, can be made with it in three seasons if planted in deep, rich soil. It should be planted in single rows, 8 to 10 inches apart, or alternated in double rows, and the plants set 16 to 18 inches apart in each row, and the rows 6 inches apart. | |
| 1 year, 12 to 15 inches..... | 3 00 |
| 2 to 2½ feet..... | 6 00 |
| 2½ to 3 feet..... | 8 00 |
| 3 to 4 feet..... | 10 00 |
| Common. Makes a good hedge and will stand in extreme northern states where California Privet is not hardy..... | 6 00 |

UNTRIMMED HEDGES

- | | |
|---|--|
| | Per 100 |
| Untrimmed hedges are allowed to grow naturally without pruning, and as a rule are not suitable for planting on the boundaries of grounds, but can be used for enclosing flower or vegetable gardens, on the edge of terraces and along roads and walks. Sometimes they can be used to conceal unsightly but necessary fences. | |
| ALTHÆA (Rose of Sharon). These make a desirable flowering hedge; blooms in August. They should be cut back to keep them compact. Nice young plants, seedlings..... | \$10 00 |
| Best Named Varieties. Strong plants..... | 13 00 |
| BERBERIS Thunbergii (Japanese Barberry). One of the most beautiful shrubs in cultivation, either for hedging or general purposes. It is of a neat, compact growth and never need be touched with the shears. The foliage is beautiful at all times, and in the fall turns to a most brilliant crimson color, but its most attractive feature is its fruit. The plant is literally covered with bright scarlet berries all the fall and winter. It never grows over about three feet high. If a low hedge is desired, it can be used for a boundary one. It is fine for the edge of a terrace and along roads and walks; as it is quite thorny, boys and cattle will leave it alone. Plant 15 to 18 inches apart..... | small plants, \$6; large plants, 13 00 |
| CORCHORIS Japonica variegata. This makes one of the daintiest little hedges imaginable. The growth is slender and graceful, the foliage is of fine form and variegated, and after the leaves drop in the fall the twigs are a bright green color, which makes it attractive all winter..... | 10 00 |
| KALMIA latifolia (Mountain Laurel). This splendid native evergreen shrub makes a beautiful and unique hedge. It would be worth growing for its fine evergreen foliage alone, but when it is in bloom in June, nothing in the world makes a finer floral display. Nice transplanted plants, 6 to 12 inches..... | 15 00 |
| LILACS. The common Purple and White Lilacs make a desirable flowering hedge, but of course a very tall one. I can supply both colors, nice plants, 1 to 2 feet high..... | 8 00 |
| ROSE, Crimson Rambler. This remarkably fine climbing Rose makes a superb hedge if planted in a row, and cut back early every spring to about three feet high..... | 20 00 |
| Sweetbrier. The popular Sweetbrier makes an attractive hedge and is desirable for planting along a fence..... | 8 00 |
| Mad. Plantier. This well-known hardy white Rose makes a fine hedge, and when in bloom in June nothing can be more attractive..... | 18 00 |



Border of Hybrid Perpetual Roses in Vegetable Garden

Roses for Fall Planting

Dormant Hardy Roses can be supplied from October 20 to April 1. Tea Roses all the year.

The fall is a much better time for planting Hardy Roses than the spring, and better plants and a better assortment of varieties can be obtained in the fall. In fact, I have always found it impossible to obtain a good assortment of Roses on their own roots in the spring, and I am loath to handle any other kind.

After a long experience with Roses, I have concluded that the imported budded Roses are comparatively worthless for general planting, and I have decided with the exception of a few varieties, which can only be obtained in budded plants, to handle nothing but American-grown Roses on their own roots. The Roses I handle are of exceptionally fine quality—there is nothing finer to be obtained at any price. Dormant Hardy Roses should be planted in the fall, or very early in the spring, and when planted fully two-thirds of the tops should be cut off. This is imperative. Protect beds during the winter with three or four inches of stable manure.

Roses grown on their own roots do not make as large plants in the nursery as budded plants, but their superiority is unquestioned. I could furnish imported budded plants at half the prices quoted below and make a good profit.

HYBRID PERPETUALS

Anne de Diesbach, Baron de Bonstettin, Coquette des Alps, Duke of Edinburgh, Earl of Dufferin, Gen'l Jacqueminot, Hermosa, Jules Margottin, Madame Plantier, Mme. Gabriel Luizet, Magna Charta, Victor Verdier, Paul Neyron, Prince Camille de Rohan, Clio (fine new white), Helen Keller, Margaret Dickson, Mrs. R. G. S. Crawford, Alfred Colomb, Baroness Rothschild, Fisher Holmes, La Reine, Marchioness of Lorne, Mrs. John Laing (one of the best, very free-flowering), Marchioness of Londonderry, Mabel Morrison, Ulrich Brunner, Coquette des Blanches, Captain Christy, Marshall P. Wilder, Mrs. Cleveland, Pierre Notting, Vick's Caprice, Caroline de Sansel, Climbing Jules Margottin, Climbing Victor Verdier, Countess de Serenye, General Washington, John Hopper.

Two-year-old plants, principally on their own roots. 30 cts. each, \$3 per doz., \$20 per 100.

MISCELLANEOUS ROSES

	Per doz.	100
Hybrid Teas. —Meteor, White La France. 4- and 5-inch pots.....	\$3 50	\$18 00
Moss. —Salet, Glory of Mosses, Perpetual White-Crested, Mme. Blanche Moreau, Paul Fontaine, budded.....	3 00	20 00

	Per doz.	100
Hardy Yellow. —Persian and Harrison Yellow.....	\$3 50	\$20 00
Rugosa. — <i>Rugosa rubra</i> and <i>Alba</i> , Mme. Geo. Bruant.....	3 50	25 00
Briar. — <i>Rosa rubiginosa</i> (Genuine Scotch Sweetbrier).....	2 00	12 00
Climbing Roses. —Queen of Prairie, Baltimore Belle and Seven Sisters.....	2 50	12 00
Climbing Victor Verdier, Climbing Jules Margottin, Gem of Prairie and Tennessee Belle.....	2 50	15 00
Dawson, 2 years, own roots.....	3 00	18 00
Tea and Noisette. —Hermosa, Niphotos, Lamarque, Testout. 5-inch pots.....	3 50	20 00
Bridesmaid, Mermet, Perle des Jardins, and all standard varieties. 4- and 5-inch pots.....	3 00	18 00
Marechal Niel. Extra strong. In 6-inch pots. 60 cts. each.....		5 50
Tree Roses. (Not recommended.) A fine lot of Holland-grown plants. Our assortment includes the cream of the hardy varieties, such as Baroness Luizet, Magna Charta, Brunner, etc.....		20 00
New Rugosa Rose (Blanche Double de Coubert). This is a new semi-double Rugosa Rose, with all the good qualities of the species and the most exquisite semi-double white flowers I have ever seen. 35 cts. each.		3 50

New Evergreen Roses (INTRODUCER'S DESCRIPTION)

The most remarkable achievement and improvement of a new and distinct type of Hardy Roses that has been made for a generation. The growth is remarkable for its freedom, a single plant, four years old, covering a space 240 square feet with long shoots, 12 to 25 feet in length, completely covering the ground with its bright glossy foliage and showy fragrant flowers. The foliage of all is leathery in texture, shiny, and not only proof against insects, but evergreen—that is, keeping the foliage all winter, a characteristic in Roses never before obtained. The flowers are produced most profusely, are all of large size, very fragrant, and can be easily used for cut-flower purposes, especially when in bud. The use of these Roses will be unlimited—for covering graves, to cover roots, stumps and stems of trees, walls and trellises, and also for forcing as pot-plants during spring, especially for Easter.

JERSEY BEAUTY (Wichuraiana × Perle des Jardins). Extremely vigorous grower; foliage shiny, thick, of leathery substance. Flowers singly or in clusters of two to four; large, single, three inches in diameter, opening pale yellow, with clusters of bright yellow stamens, which gives it a most striking appearance; fragrant, and produced in greatest profusion, covering the plant entirely, and having the appearance of a yellow Cherokee Rose. Most striking variety of the set.

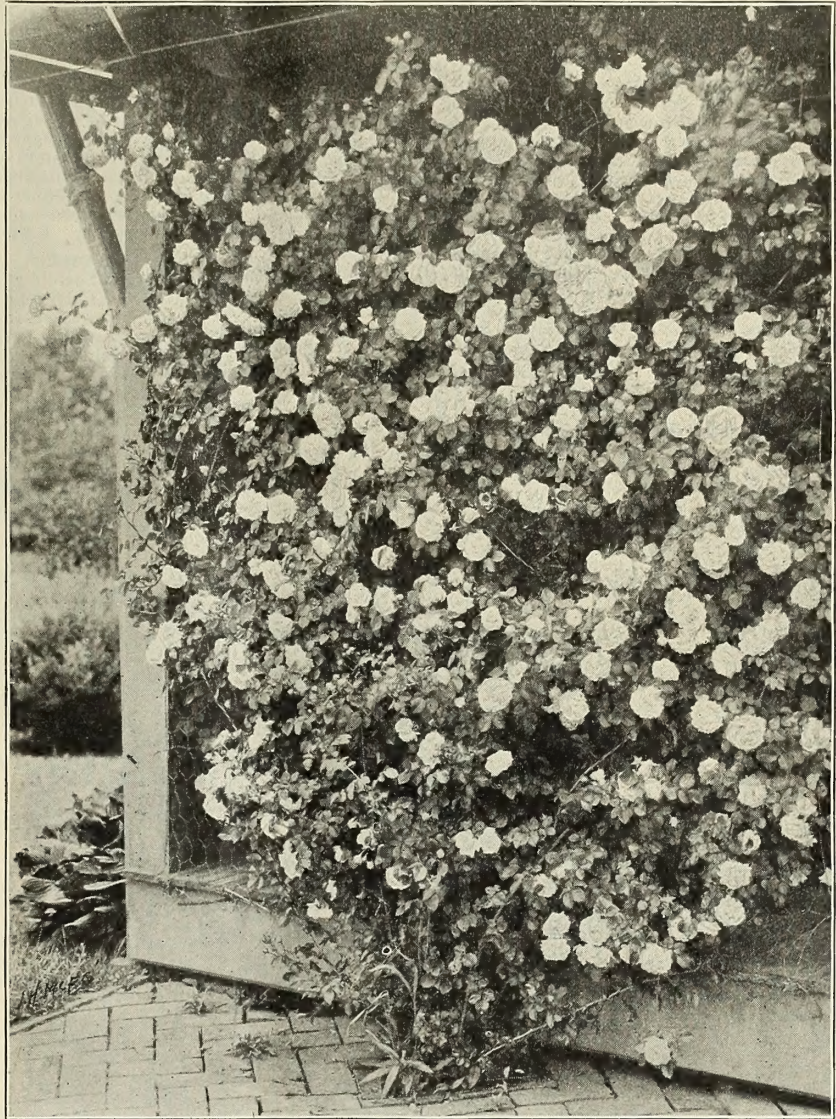
EVERGREEN GEM (Wichuraiana × Madam Hoste). The most wonderful grower of the set. Foliage fine rich bronze color, closely matted. Flowers produced singly on stems; yellow, buff in bud, opening to almost white, two or three inches in diameter, perfectly double, and of a delightful sweetbrier fragrance.

GARDENIA (Wichuraiana × Perle des Jardins). Strong grower, with large green foliage. Flowers produced singly on stems one-half to one foot long. When in bud hardly distinguishable from Perle des Jardins. Bright yellow, and when open cream color; 3 to 3½ inches in diameter, incurving toward evening to perfect imitation of gardenia or cape jessamine as to shape and color, hence its name. Flowers are delightfully fragrant and produce freely. Grand Rose for any purpose.

NOTE.—These Roses have not proven evergreen in my garden, but they are very beautiful. Prices for the above new Roses, 2-year-old plants, 30 cts. each, \$3 per doz.

New Climbing Rose WILLIAM C. EGAN

This is a new, distinct and very desirable candidate for a position in our list of choicest climbing Roses. Being convinced of its many excellent properties, I have grown a large stock of healthy young plants, and take special pride in their dissemination. It was raised by Mr. Jackson Dawson, of the Arnold Arboretum, Boston, Mass., and is the product of Wichuraiana crossed by General Jacqueminot, without any trace of either in the bloom. The habit of the plant is sub-climbing, but vigorous and healthy, with bright glossy foliage. The flower is large and very full, resembling in shape, as well as color, the Souvenir de la Malmaison. Although only an annual bloomer, it remains in flower several weeks, and the large trusses of superb bloom are unusually attractive. Mr. Dawson considered this the best of all his numerous hybrids. It is unquestionably reliable and hardy at the north. Field-grown plants, strong and healthy, 2 years, 50 cts. each, \$5 per doz.



New Climbing Rose, William C. Egan

New Hardy Yellow Rose, "SOLEIL D'OR" (Golden Sun)

A very promising new Rose. The first of a new race of Roses originated by M. Pernet-Ducher, and called *Rosa Pernetiana*. It is the result of a cross between the well-known Persian Yellow and the Hybrid Perpetual Antoine Ducher, and is characterized by M. Pernet as a perpetual flowering variety. We append the description of the originator: "This magnificent variety, like the Persian Yellow, is perfectly hardy. It retains a good deal of the character of the Persian Yellow, the bark of the wood being reddish, the thorns very fine, the foliage more ample, and the leaves, of a beautiful clear green, are closer together. Its growth is robust, very vigorous, making plants three feet in height. The flowers are large, full and globular, measuring 3½ inches across, and fragrant; buds conical-shaped; color superb, varying from gold and orange-yellow to reddish gold, shaded with nasturtium-red. The color stands the sun well." This should be a valuable Rose. Price, 85 cts. each.

A Notable Rose, ROSA RUBRIFOLIA (The Red-Leaved Rose)

Is little known, but deserves the greatest popularity, both on account of its foliage and flowers. The foliage is reddish purple, better than most of the purple-leaved shrubs, and this foliage, combined with a multitude of single pink flowers, make a unique effect not obtainable with any other plant that I know of. The place for this Rose is in shrubbery or on the lawn, as it is a free, vigorous grower. It can also be used advantageously for naturalizing on rough, rocky and hilly land. It is of the easiest culture, and will grow in almost any soil or situation. Price, 30 cts. each, \$3 per doz., \$20 per 100; small plants, 20 cts. each, \$1.50 per doz., \$8 per 100.

RAMBLER ROSES

YELLOW. 30 cts. each, \$3 per doz.

WHITE. 30 cts. each, \$3 per doz.

PINK. 30 cts. each, \$3 per doz.

CRIMSON. "The Gardeners' Chronicle, of London, England, printed an illustration from a photo of the Crimson Rambler Rose, which is well known for its extraordinary free-blooming character. According to this picture, sixteen strong stalks ornament a hedge twelve yards in length. Every stalk carried about fifty clusters of flowers. If the fact is taken into consideration that each cluster averages about forty open flowers, one arrives at the enormous total of 32,000 Roses to a single plant. The paper also emphasizes the fact that this variety is very hardy." The sales of Crimson Rambler Roses have greatly exceeded that of any other Rose extant within the same number of years, and it is said that the fortunate English introducers of this variety have made a profit of over one hundred thousand dollars with it. For two or three years after its introduction I was rather skeptical of its merits, but I am now convinced that they have never been exaggerated. It is strikingly beautiful, absolutely hardy, and no Rose can be used for more purposes. As a climber it is unsurpassed, perhaps unequaled; as a pot-plant for forcing the florists are finding it extremely popular. By keeping it cut down it makes a splendid bedding Rose, and a hedge of it is one of the most beautiful objects imaginable. I can supply a splendid stock of plants, all grown on their own roots, at these extremely low prices: 30 cts. each, \$3 per doz., \$20 per 100; a few extra-strong plants, 50 cts. each.

"DOROTHY PERKINS." This is a splendid new shell-pink climbing Rose. It attracted much attention at the Pan-American Exposition, where a bed of fourteen-month-old plants produced a show of bloom unequaled by any other variety, unless it was the famous Crimson Rambler. This new Rose is of the same strong habit of growth as Crimson Rambler, and the flowers are borne in clusters

of 30 or 40, and sometimes even 50 to 60. The flowers are large for a Rose of this class, very double, sweet-scented and of a beautiful shell-pink. Raised from seed of *Rosa Wichuraiana* and crossed with that grand old Rose, Mme. Gabriel Luizet. Absolutely hardy. Mr. Wm. Scott, the assistant superintendent of Horticulture at the Pan-American, says regarding the Dorothy Perkins: "This has exactly the habit of the well-known Crimson Rambler. It has flowered splendidly and has been very brilliant. This seems to me to be a great acquisition, and I believe it to be a good forcing Rose. The individual flower is larger than the Crimson Rambler, but it is a beautiful shell-pink in color." 50 cts. each, \$5 per doz.

"HELENE." Helene is a seedling from Crimson Rambler, possessing fully as vigorous habit as its parent, and entirely hardy. The flowers are larger than those of Crimson Rambler, nearly double, and borne in clusters of 20 to 50. The color is of a soft violet-rose, base of petals yellowish white. The anthers and pistils are pure yellow, and so numerous as to give further color to the flower. A group of this Rose proved one of the most effective things I had in my garden this spring. Extra-strong plants, 30 cts. each, \$3 per doz., \$20 per 100.

"PSYCHE." Received an award of merit from the Royal Horticultural Society of England. A cross between the Crimson Rambler and the Polyantha Rose Golden Fairy. In growth and habit it much resembles the Rambler. The flowers are produced in clusters of from 8 to 35, and are 2 to 2½ inches across when expanded. The color is white, suffused with salmon-rose and pink, with yellow base to the petals. A real companion to Crimson Rambler. Strong young plants, 50 cts. each.

CARMINE PILLAR

This splendid new single Rose is extremely effective. It is perfectly hardy, of rampant growth, and literally covered with large, brilliant, single crimson flowers in June. It is the showiest Rose in cultivation. This Rose in some respects is better than the famous Crimson Rambler. Strong plants, 40 cts. each, \$3.50 per doz.

ROSA WICHURAIANA

In some respects this Rose, which is also known as the "Memorial Rose," is better than Crimson Rambler, although it lacks the brilliant color of its more advertised contemporary. As a climber for covering porches, trellises and arches, and as a creeper for covering steep banks or any ground needing covering, it is unequalled. The foliage is a lustrous shining green. In bloom the plant is literally covered with exquisitely beautiful single white flowers, which are followed by an abundant crop of bright red hips or berries, which remain on the plant all winter. The Rose is entirely free from attacks of insects or disease and is absolutely hardy, root and branch. Strong 2-year-old plants, 30 cts. each, \$3 per doz., \$20 per 100; strong 1-year-old plants, 20 cts. each, \$1.75 per doz., \$10 per 100.

ROSA WICHURAIANA HYBRIDS

UNIVERSAL FAVORITE. A free grower, producing long branching shoots, with bright shiny foliage in abundance, and soft, light pink double flowers, two inches in diameter; strongly perfumed. 30 cts. each, \$3 per doz.

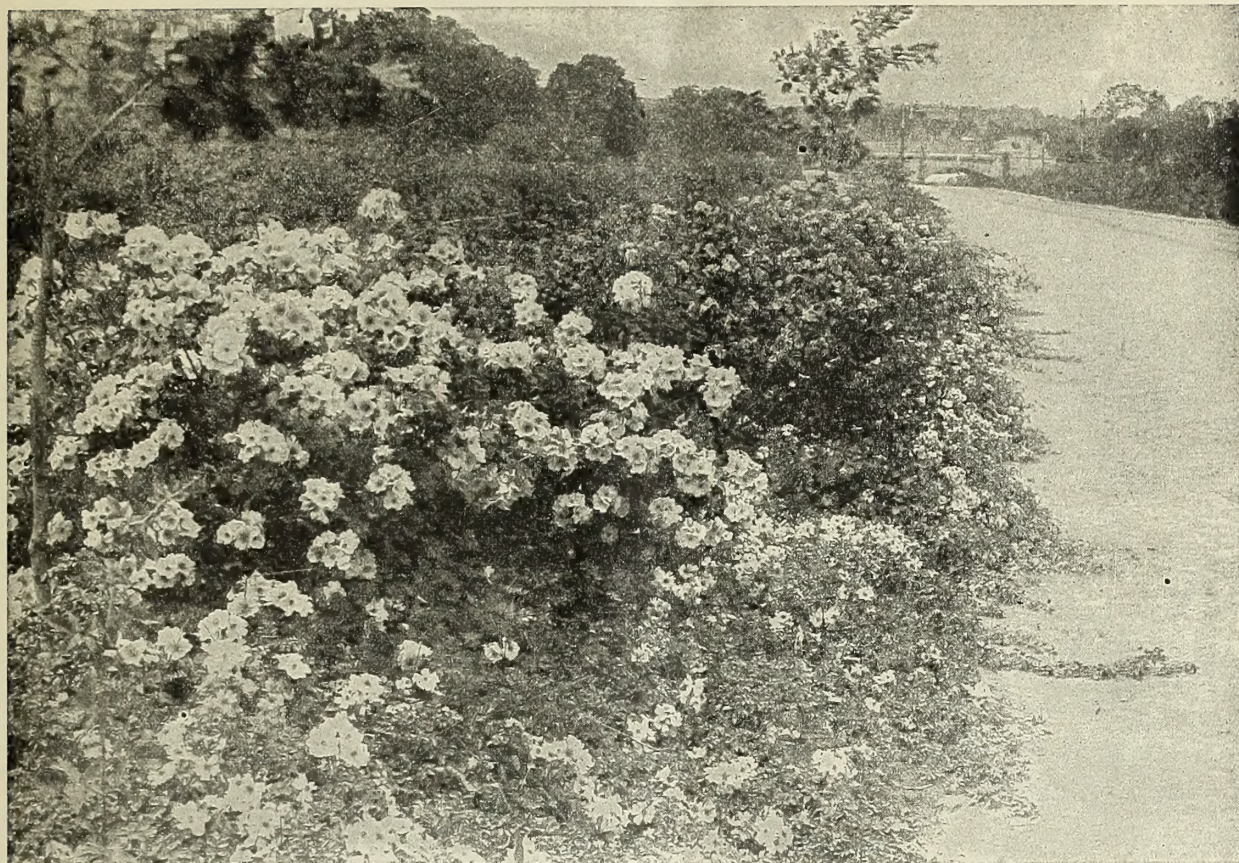
SOUTH ORANGE PERFECTION. This is a gem, with free growth close to the ground, and produces multitudes of the most perfectly formed double white flowers about one and one-half inches in diameter; soft blush-pink at the tips, changing to white. 30 cts. each, \$3 per doz.

MANDA'S TRIUMPH. This is a grand hybrid of free growth, with fine foliage and clusters of from twelve to eighteen flowers on even a small-sized shoot, literally covering the plant with its perfectly formed double white flowers, nearly two inches across; beautifully imbricated; a valuable sort for either cut-flowers or pot-plants. It is also very sweet-scented. 30 cts. each, \$3 per doz.

PINK ROAMER. This is without question a hybrid between the "Sweetbrier," and carries these characteristics in bloom, while the growth, which is very rampant, partakes more of the "Wichuraiana." The single flowers, which are produced in close heads, are nearly two inches in diameter; bright rich pink, with almost a white center, which lightens up the orange-red stamens, producing an effect which, combined with the fragrance, makes it one of the most valuable Roses in cultivation. 30 cts. each, \$3 per doz.



Rosa Wichuraiana on an Arch at "Dorosis"



Wild Roses (*Rosa setigera* and *R. Wichuraiana*) in one of the Boston Parks

Wild Roses of Various Countries

With the exception of the Japanese Rose, *Rosa rugosa*, American nurserymen have ignored the numerous wild Roses, which is unfortunate, for they are undoubtedly the most decorative Roses that can be planted, and splendid effects are to be had with them not obtainable with any other plants; and as a rule they are of the easiest culture, vigorous growers and entirely free from attacks of insects or disease. The flowers of all are, of course, single, but many people, of whom I am one, think single flowers more beautiful than double ones, which after all are abnormal, and the coloring, form and often the arrangement of single Roses is exquisitely beautiful. I think one of the most beautiful garden pictures I have seen was a trellis covered with a *Rosa multiflora* with a border of colored peonies at the base of the trellis. Both peonies and Roses were in bloom. The rose was literally covered with thousands of its lovely white blooms, each with a center of rich yellow stamens.

These wild Roses can be used in many ways. Some are climbers and can be used for covering anything desirable to cover with a climber; others, like *Rosa Wichuraiana*, are creepers, and are splendid for covering rough banks; and others are desirable for planting among shrubbery, but especially *Rosa rubrifolia*, *Rosa rugosa* and *Rosa setigera*. *Rosa rubrifolia* is especially striking on account of its reddish purple foliage, which makes a fine contrast with its own lovely pink flowers and with the green foliage of surrounding shrubs. *Rosa rugosa* is now pretty well known, but is deserving of the greatest popularity. It has every good quality, splendid foliage, immense single red or white flowers, which bloom freely all season and which are followed by large, beautiful red fruit, which lasts until severe freezing weather comes in winter. It should always be planted in masses, either by itself or in connection with other shrubbery. It also makes a beautiful hedge.

	Each	Per doz.	100
ROSA Arvensis. An extremely beautiful creeping Rose, with lovely foliage and exquisite white flowers; fine for covering banks	\$0 25	\$2 50	
Moschata nivea. Mr. Wm. Robinson, the great English authority, says this is the most beautiful single rose in the world, but he has never seen our Cherokee Rose growing in the south; but <i>R. moschata nivea</i> has the advantage of being perfectly hardy in the north, and its large white bluish-tinted flowers are perfectly lovely	75		
Andersonii. Undoubtedly the finest single pink Rose in cultivation	50		
Pomifera (Apple Rose). A distinct and beautiful single pink Rose, with glaucous foliage. The striking feature of this Rose is that its fruit is very large, bright red and produced in the greatest profusion	30	3 00	
Canina (Dog Rose)	15	1 50	
Carolina (American Wild Rose). Blooms in July	15	1 50	
ROSA lucida (Dwarf American Wild Rose) ...	\$0 25	\$2 50	
Multiflora (Japanese). An extremely beautiful Rose that can be used as a climber	30	3 00	
Rubrifolia. Beautiful reddish foliage, contrasting well with its beautiful pink flowers; very striking and pretty in groups or planted among shrubbery	30	3 00	\$20 00
Rubiginosa (Sweetbrier)	25	2 00	10 00
Rugosa. Mixed colors	20	2 00	13 00
Rugosa rubra (Japanese Rose). Large red flowers; extremely desirable	30	3 00	20 00
Rugosa alba. Large white flowers	30	3 00	20 00
Setigera (Single Prairie Rose). Blooms in July; striking and fine; desirable for shrubberies ..	25	2 50	
Wichuraiana (Trailing Japanese Rose). Splendid for covering banks or trained as a climber ..	30	3 00	20 00
Nuttalliana	25	2 50	
Polyantha	25	2 50	
Acicularis (Siberian Rose). The first Rose to bloom in spring. Large, red, sweet-scented, followed by curious red fruit	40	4 00	

62.73



Illustration from "A Plea for Hardy Plants"

"A PLEA FOR HARDY PLANTS"

PUBLISHED BY DOUBLEDAY, PAGE & CO., NEW YORK

This is the name of a book of 64 pages on gardening with hardy plants, which has just been published. It contains my lecture on the subject delivered before the Massachusetts Horticultural Society, and several plans for large and small places, gardens and flower borders. It is beautifully printed and profusely illustrated with pictures made in the best gardens in America and Europe.

Price, paper, 80 cents, net; Edition de Luxe, handsomely bound in cloth, \$1.60, net

LANDSCAPE GARDENING

The majority of American suburban grounds are laid out and planted without the aid of professional advice. The result is almost always unsatisfactory, although often the expenditure would have secured most beautiful results if directed by skilled advice. I do landscape gardening—do it for people of exacting taste, to whom I refer. I make the plans, with estimates, purchase the stock necessary and superintend the work. I do any one or all of these things, satisfactorily as to results, moderately as to cost. For small grounds I can make satisfactory plans if furnished with a plat drawn to scale. For large grounds, and where extensive improvements are desired, a personal visit would be necessary and can be arranged for on reasonable terms. I can make no plans during the month of April.

J. WILKINSON ELLIOTT

HORTICULTURAL BUYER'S AGENT

LANDSCAPE ARCHITECT

CARNEGIE BUILDING

PITTSBURG, PA.

TELEPHONES

1078 Court (Office)

Colfax Station (Experimental Grounds)